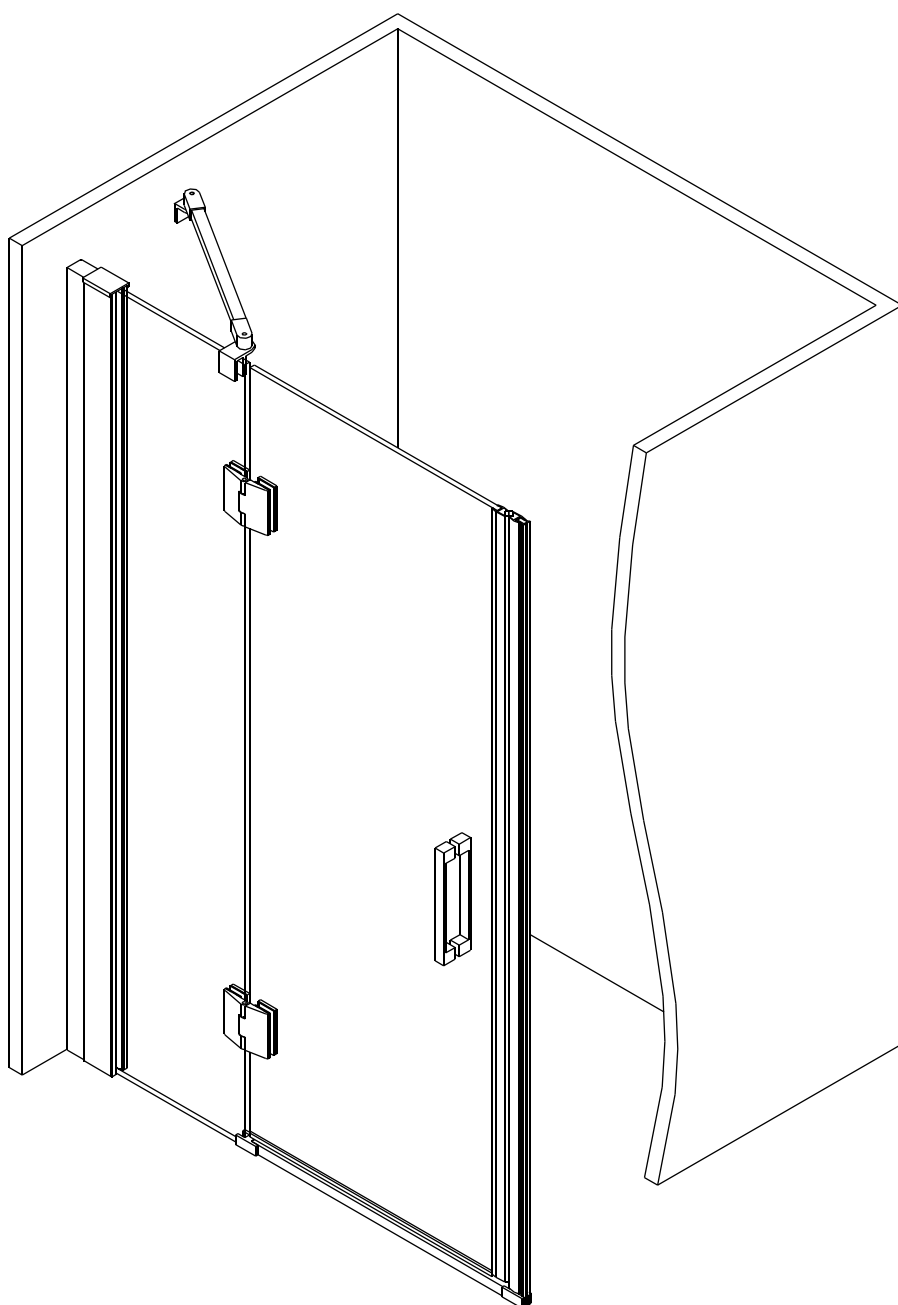


CE CE

EN14428 EN12150

- GB All shower products are designed and manufactured according to EN14428
All the glass used on the product are certified and tested according to EN12150
ES Todas las mamparas han sido diseñadas y fabricadas de acuerdo con
Todos los cristales utilizados en nuestros productos están certificados y probados de acuerdo con

GME
DIVISIÓN BAÑOS



COMBINACIONES MODELO GLASS

GB INSTALLATION MANUAL
Do not discard. Save the installation manual for further use.

ES MANUAL DE INSTALACIÓN
No tirar. Guardar el manual de instalación para un uso posterior

GUIA DE INSTALACIÓN SERIE GLASS

La Serie GLASS ofrece multitud de posibles combinaciones a partir de diferentes elementos. Es por ello, que para ofrecer todas las variantes posibles hemos diseñado el presente Manual de Instrucciones estructurado de la siguiente manera.

1.OPERACIONES: Son los diferentes pasos a realizar de forma independiente.

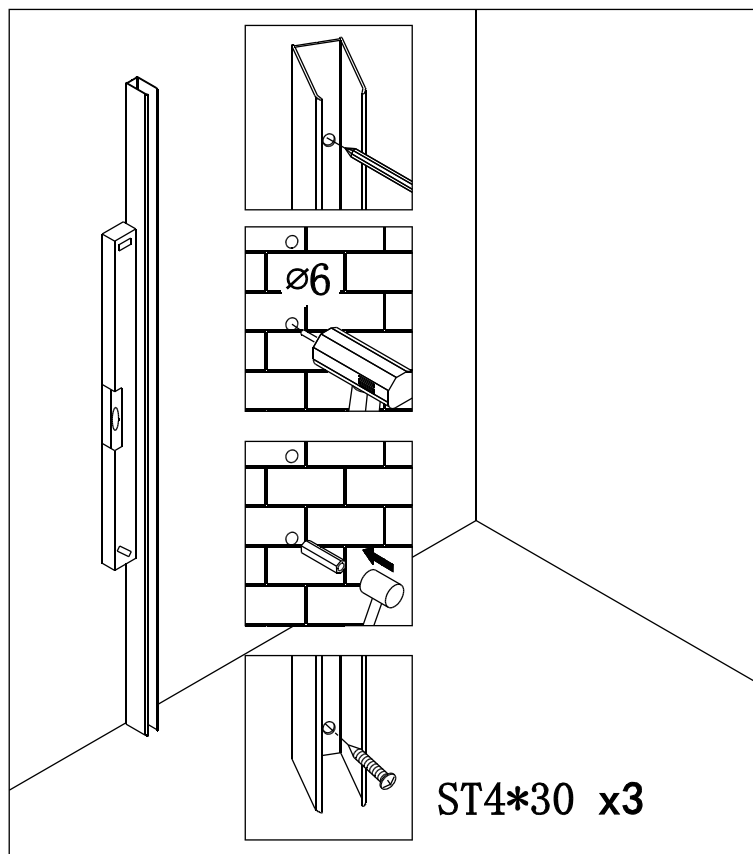
2.COMBINACIONES: Es la secuencia de operaciones que se debe llevar a cabo para la instalación de la mampara completa adquirida.

PASOS A SEGUIR:

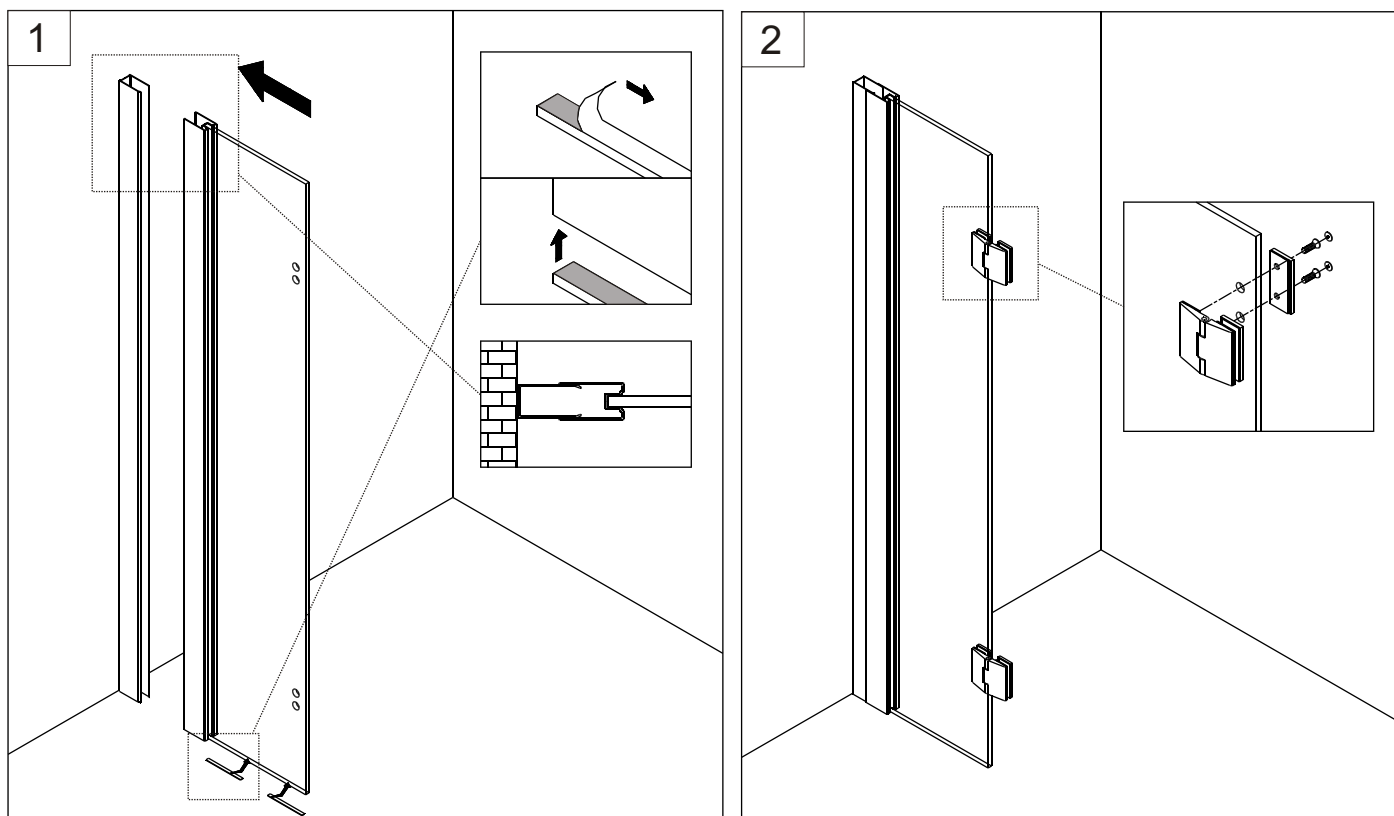
1.Seleccione del apartado COMBINACIONES aquella que corresponde a su instalación.

2.Siga la secuencia indicada en dicho apartado, remitiéndose en cada recuadro a las operaciones indicadas.

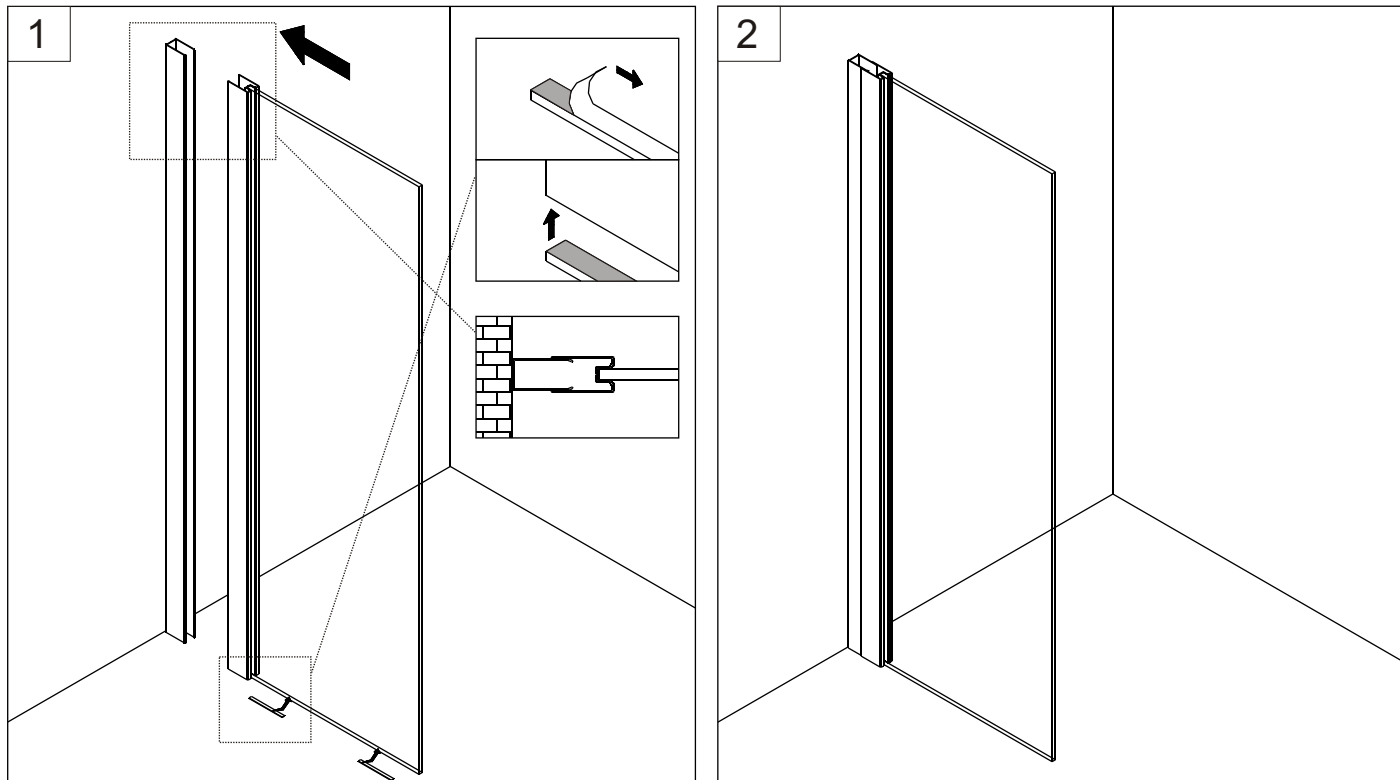
A. COLOCACIÓN PERFIL PARED



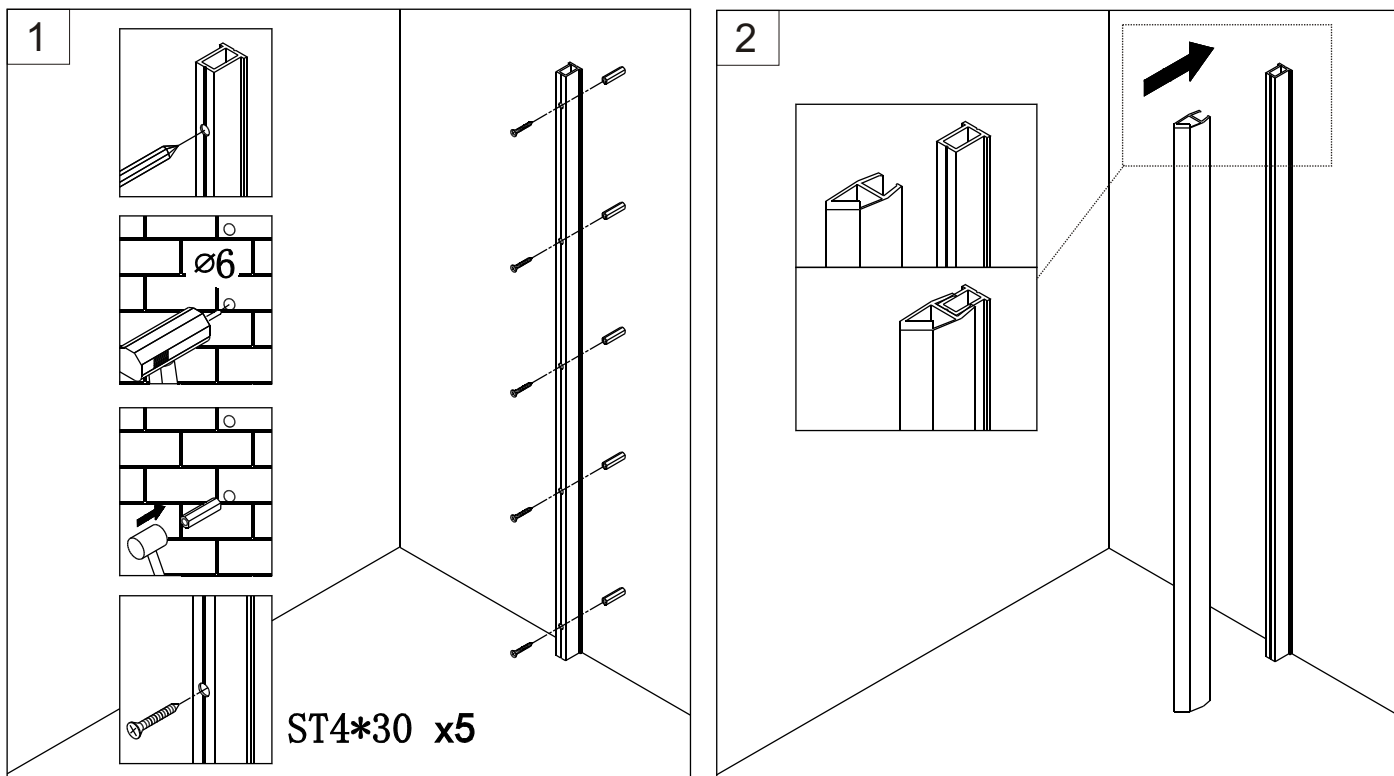
B. INSTALACION DEL PANEL FIJO Y BISAGRA



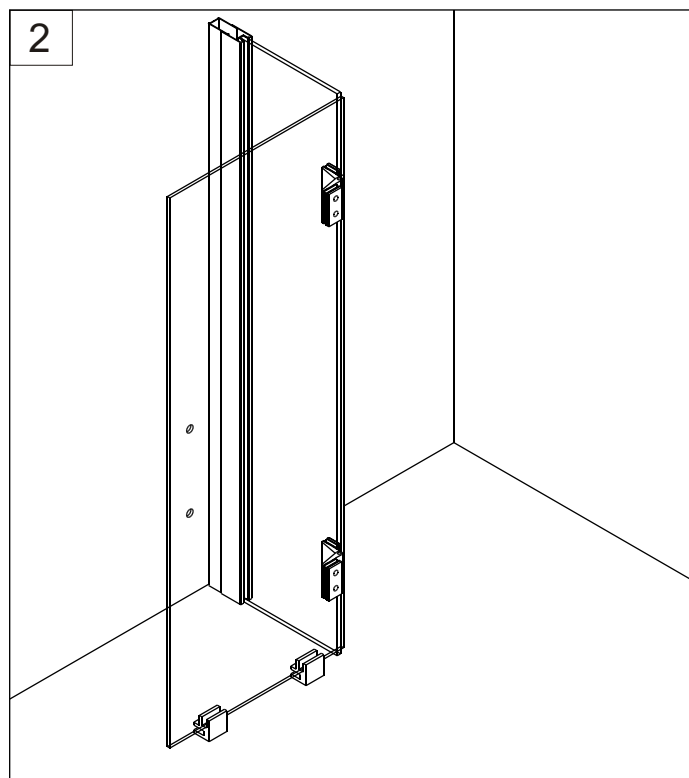
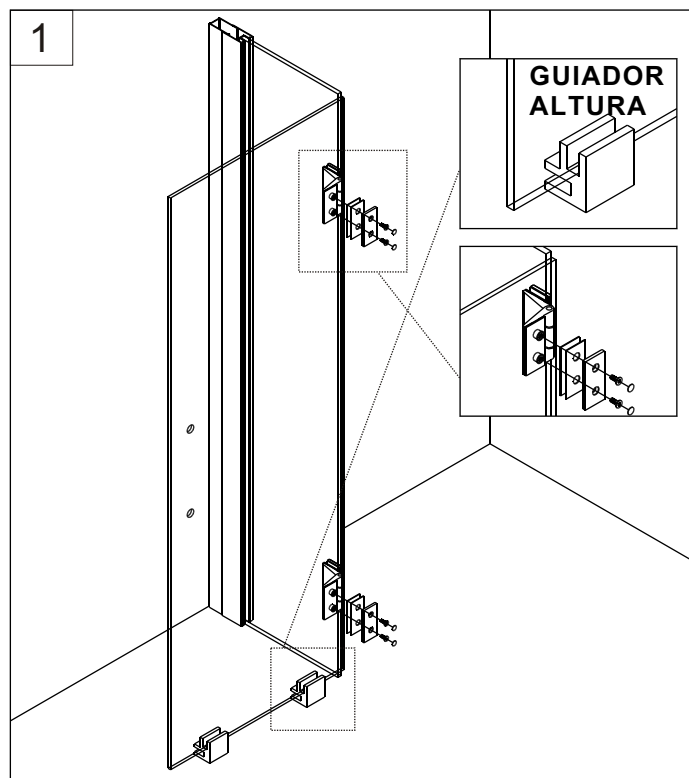
C. INSTALAR PANEL



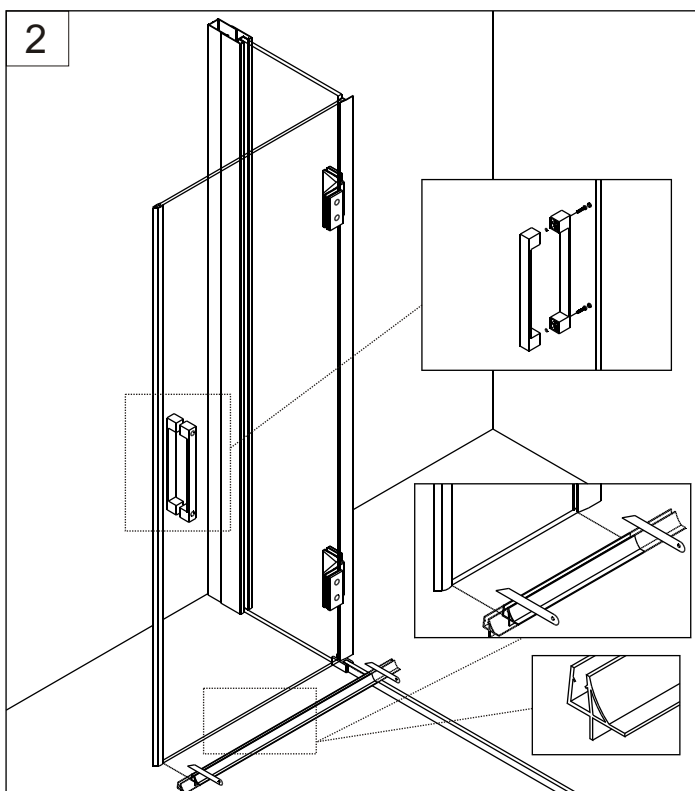
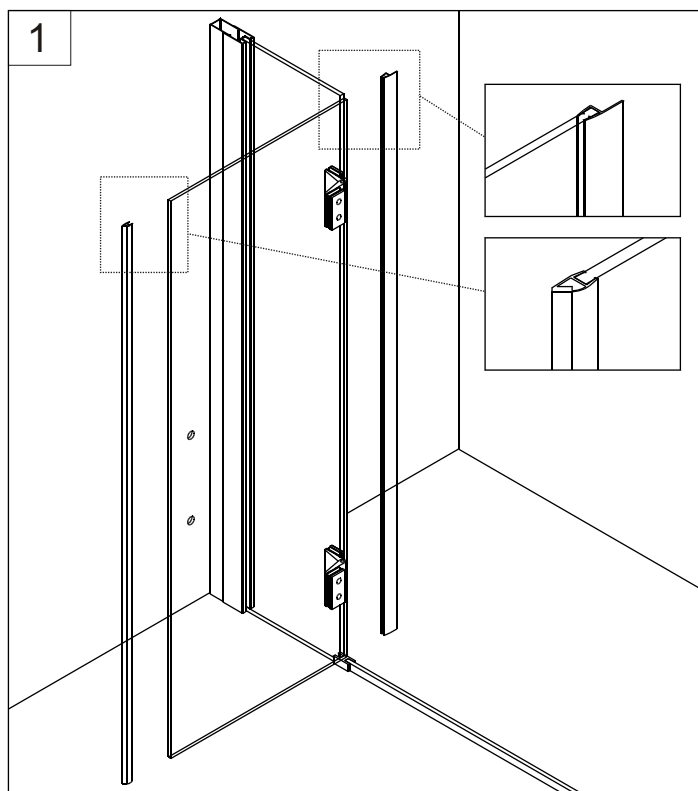
D. INSTALACION PERFIL + MAGNETICO



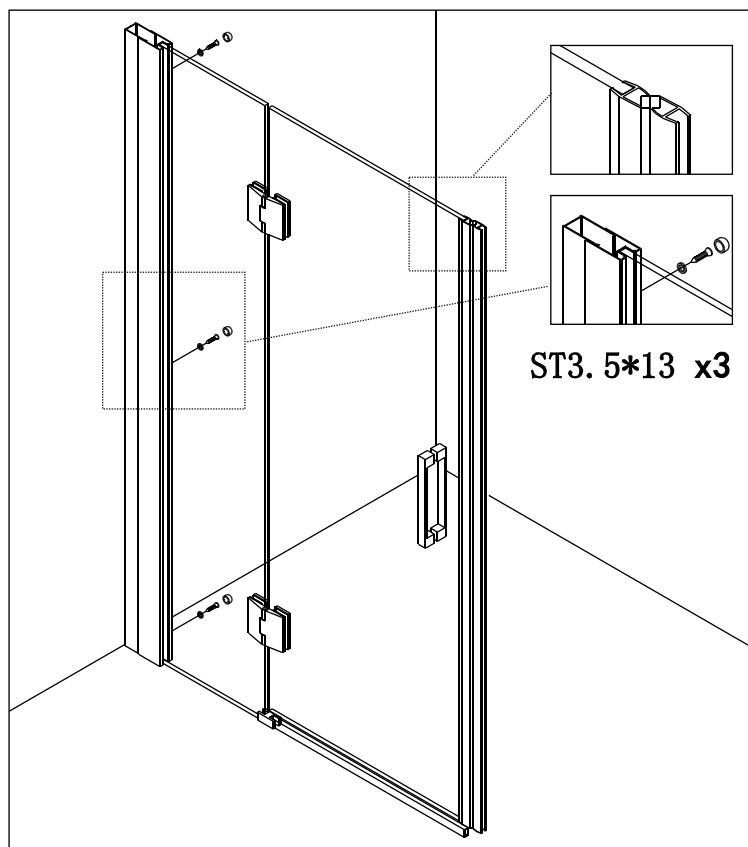
E. INSTALACION DE LA PUERTA



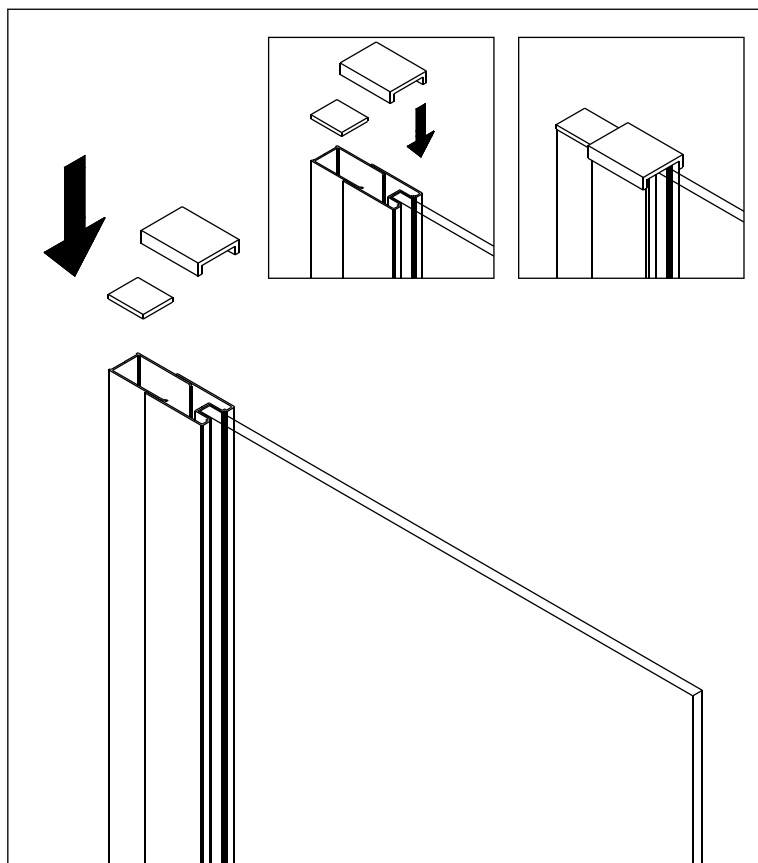
F. COLOCACION DEL VIERTEAGUAS / IMAN



G. AJUSTE Y FIJACION A MEDIDA DESEADA

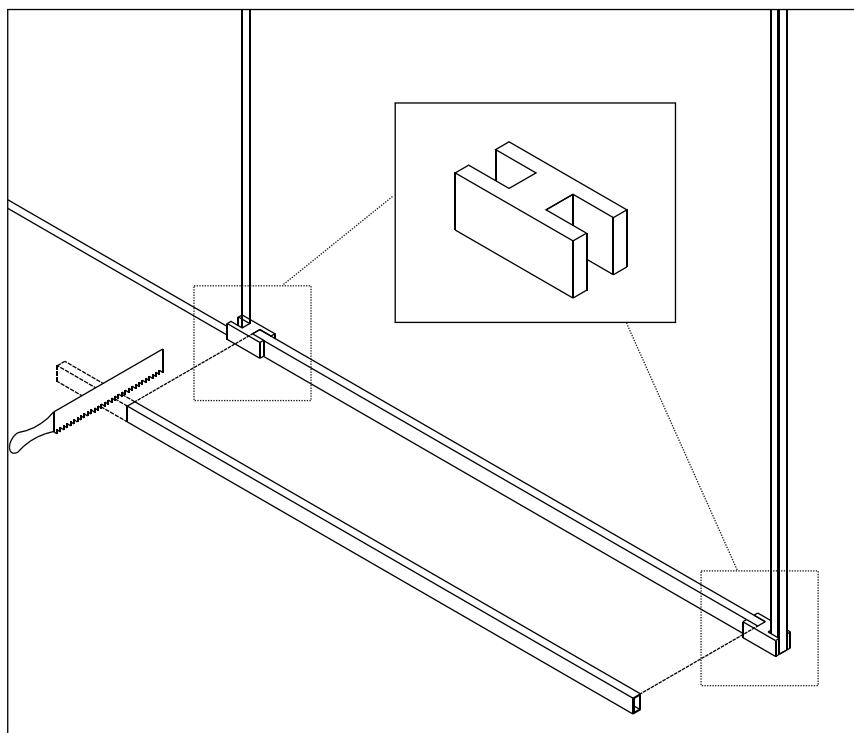


H. COLOCACION DE TAPETAS DECORATIVAS

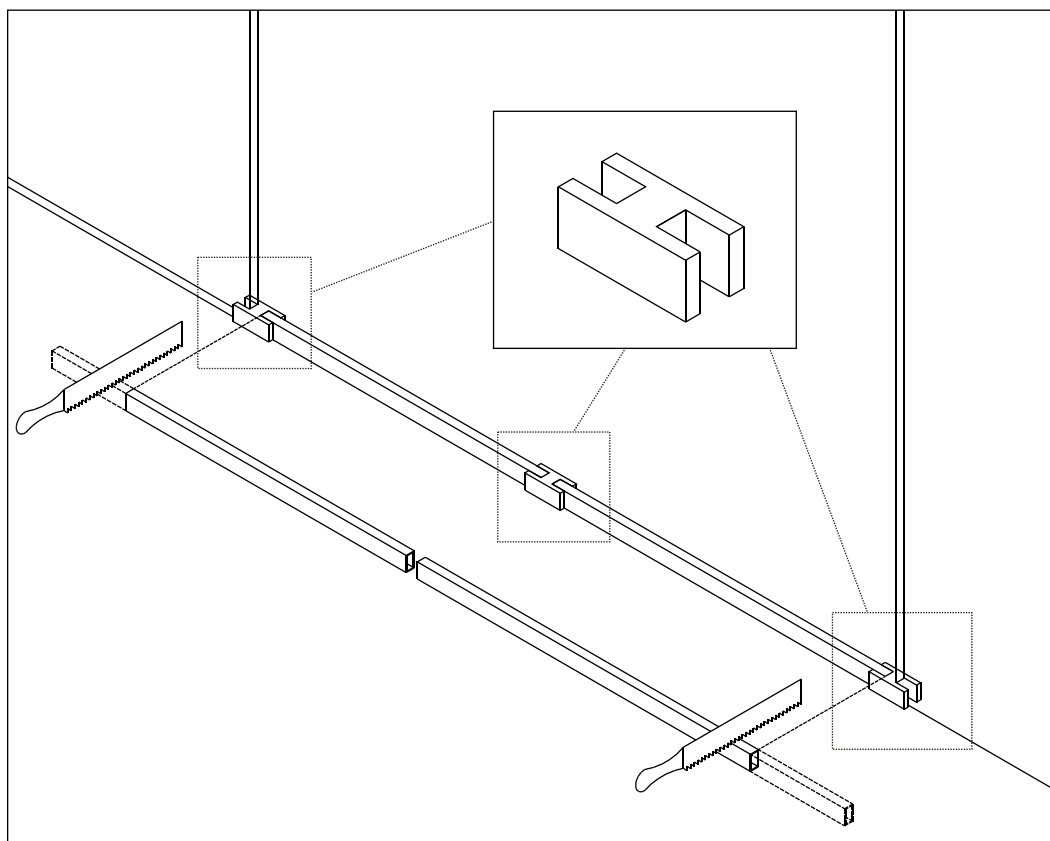


COLOCACIONES JUNTA INFERIOR

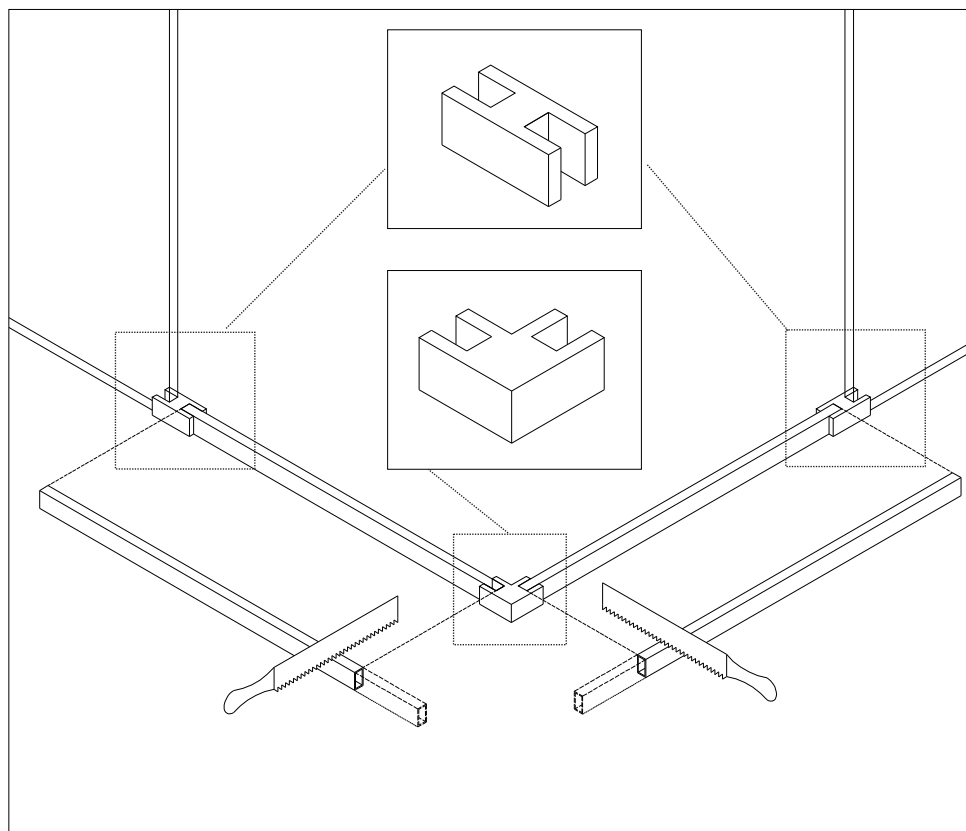
I. PARA FRONTAL 1 FIJO + 1 PUERTA



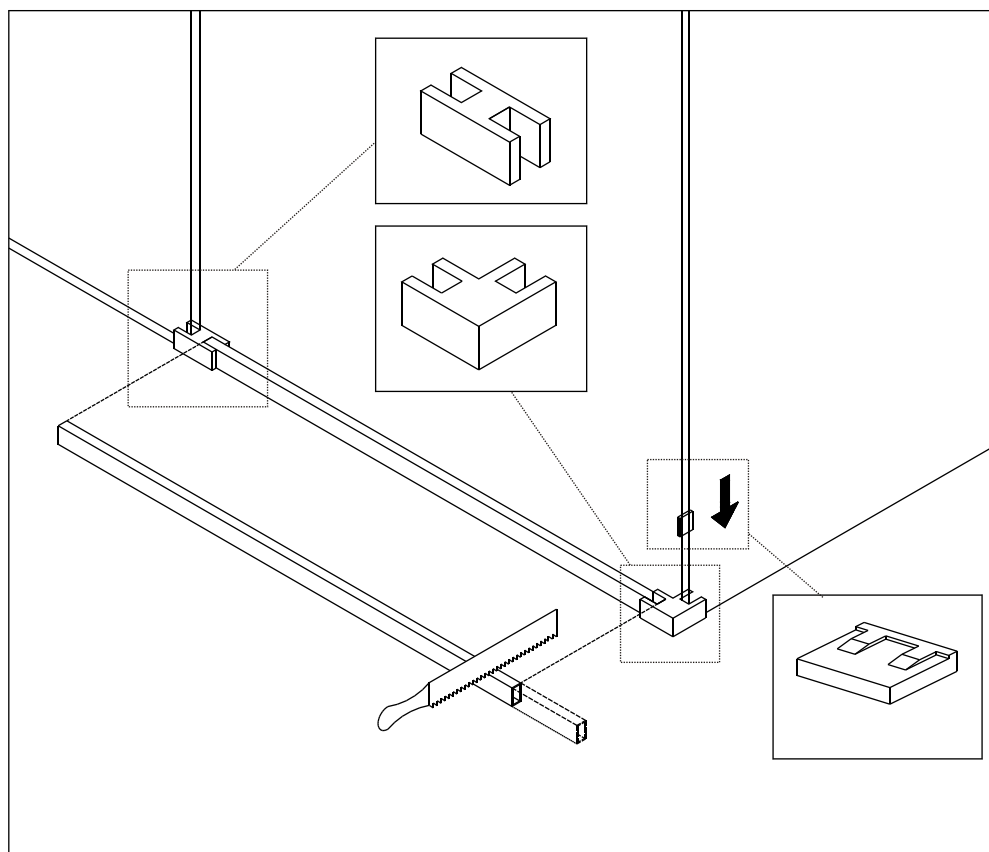
J. PARA FRONTAL 2 FIJOS + 2 PUERTAS



K. PARA APERTURA VERTICE

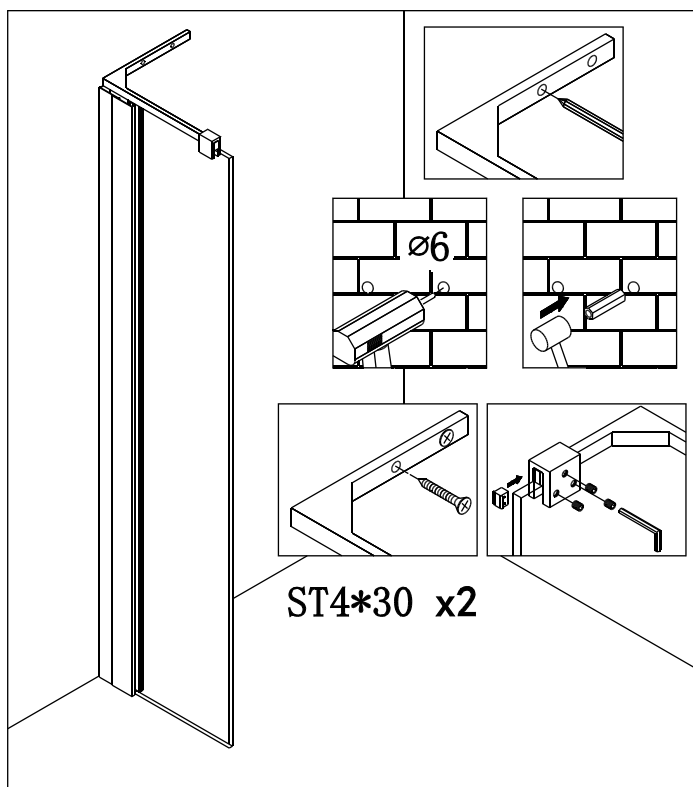


L. PARA FRONTAL + LATERAL FIJO

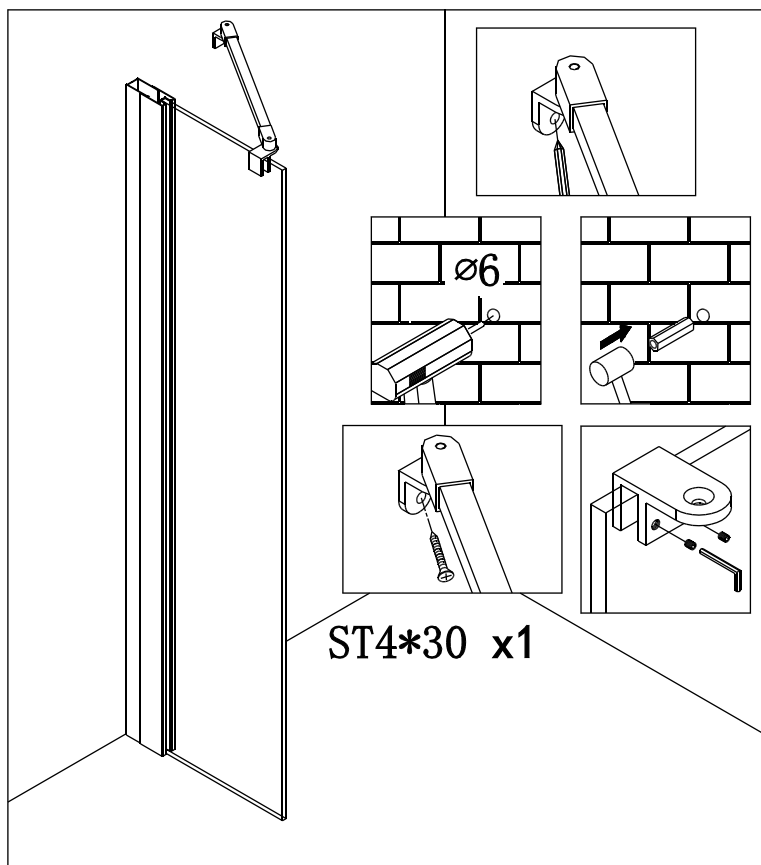


DIFERENTES BRAZOS

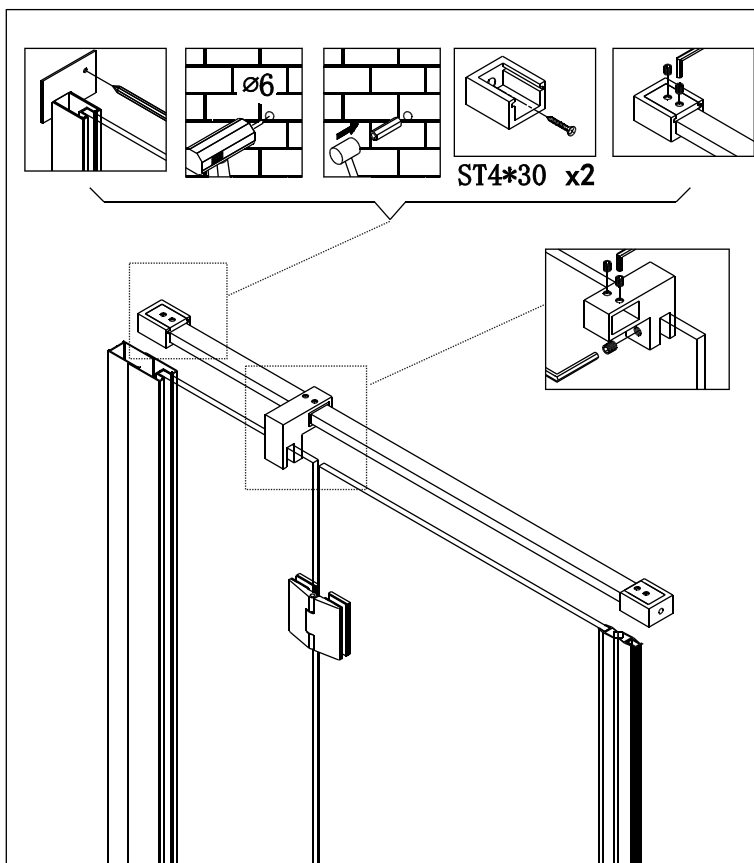
M. 1719 MINIMAL



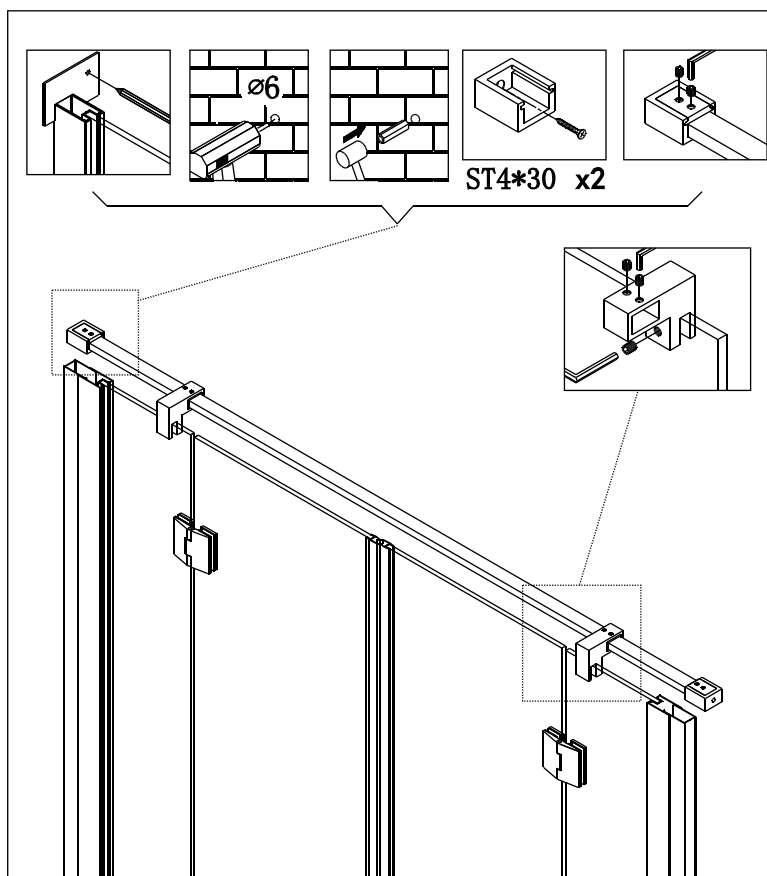
N. 1715 BRAZO GLASS



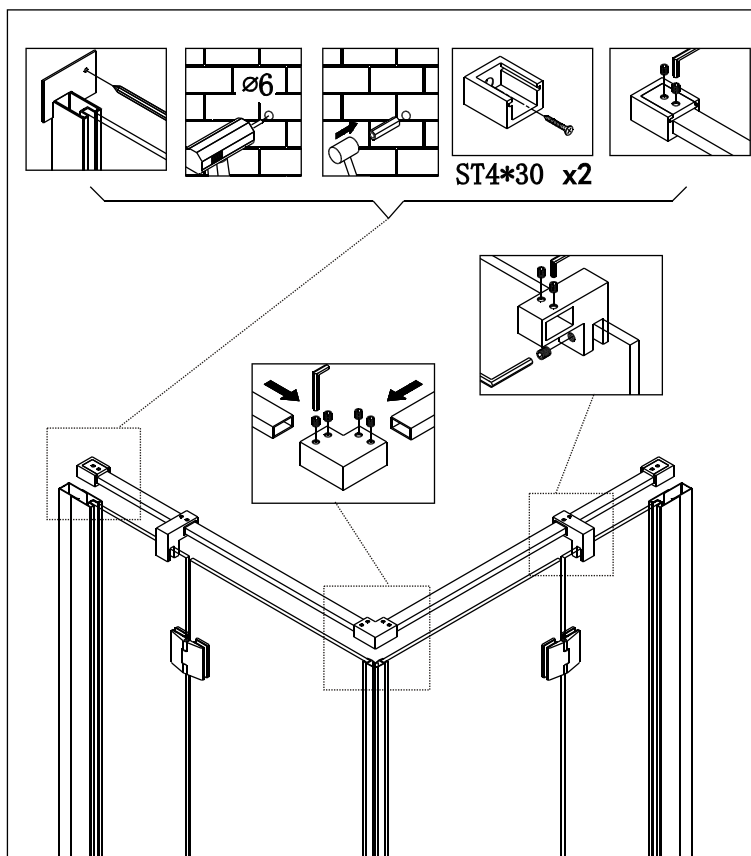
O. 1716 BARRA 140 1FIJO-1- PUERTA FRONTAL



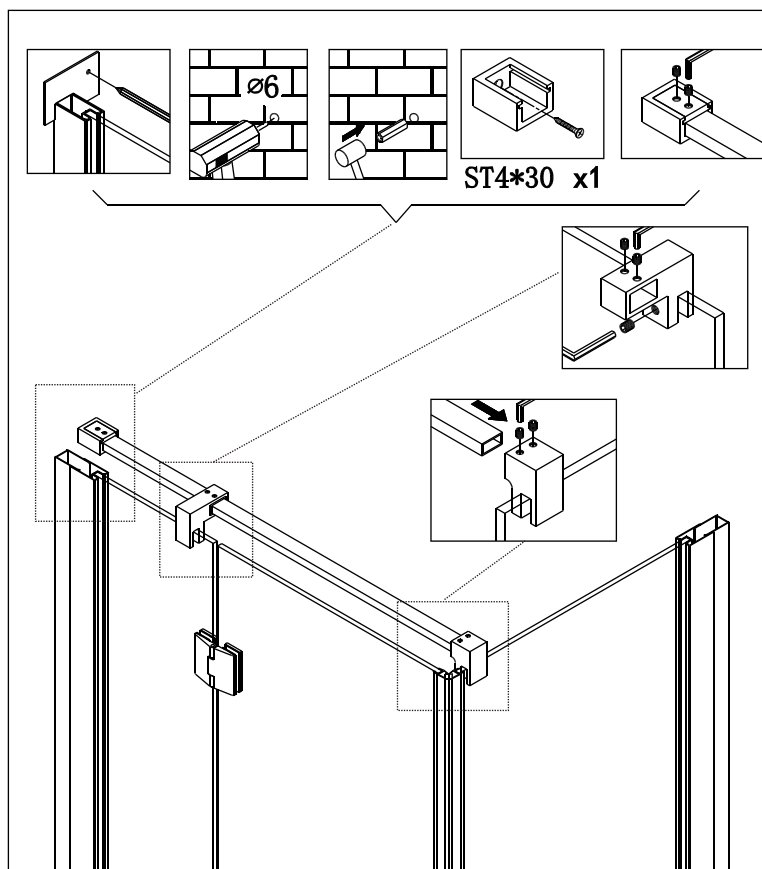
P. 1717 BARRA 2M 2FIJOS -2 PUERTAS FRONTAL



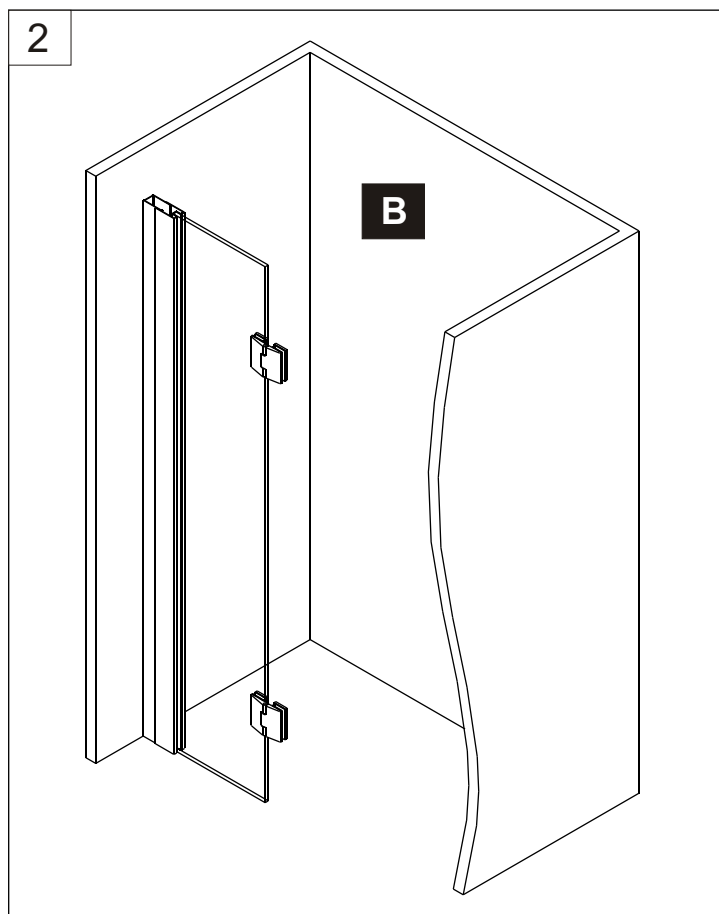
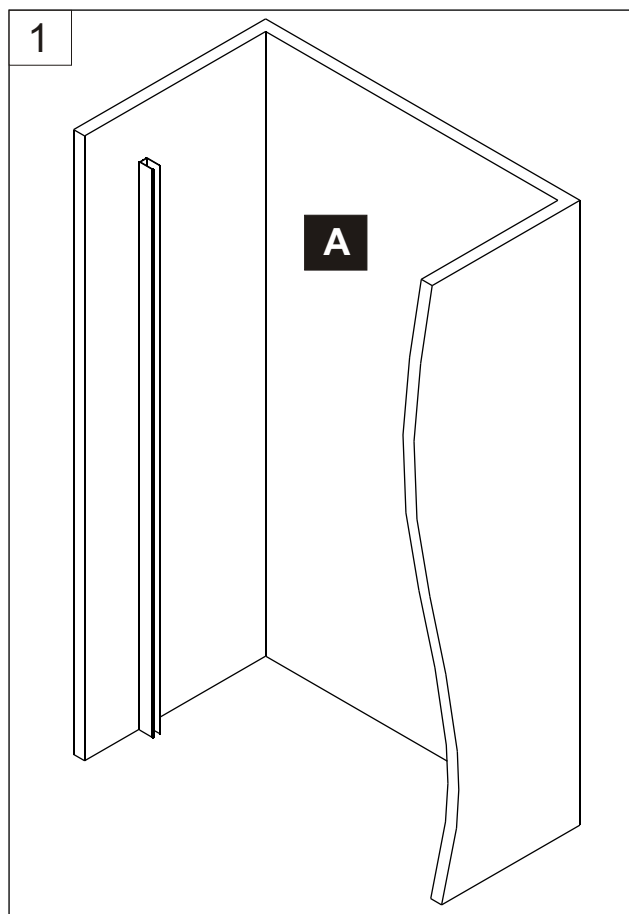
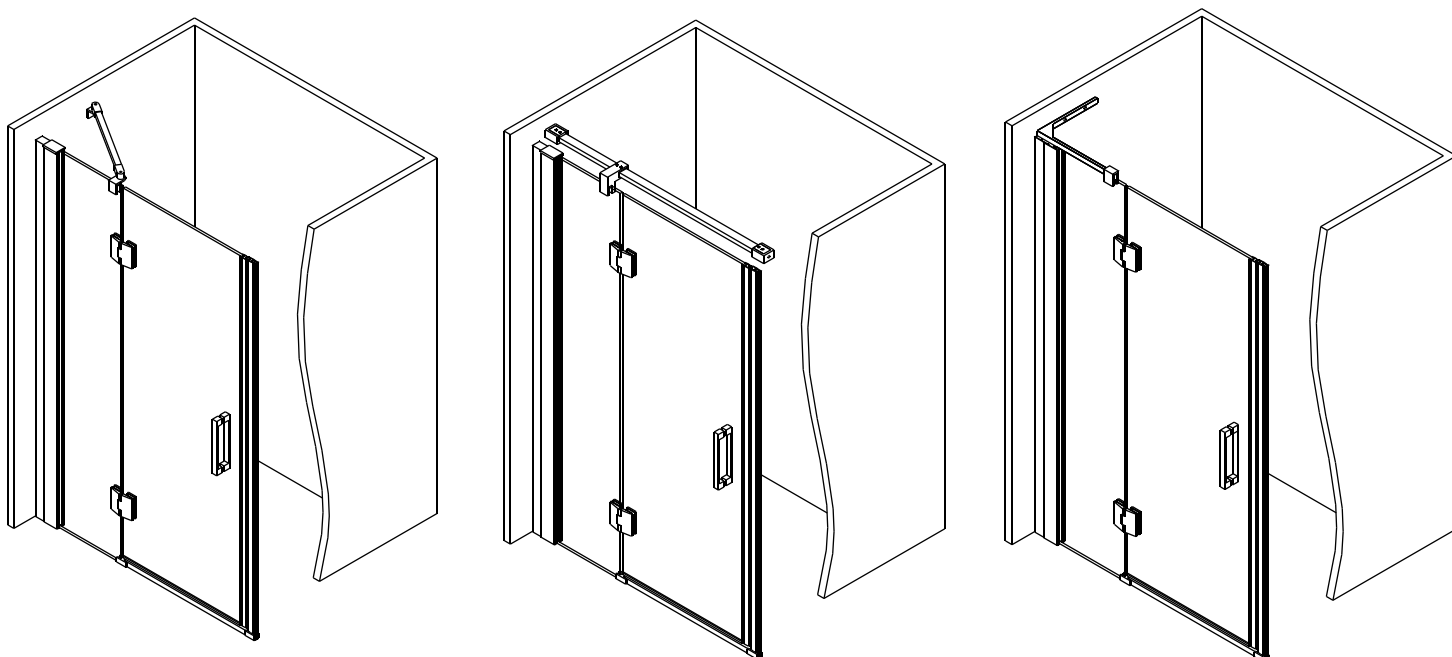
Q. 1730 BARRAS APERTURA VERTICE

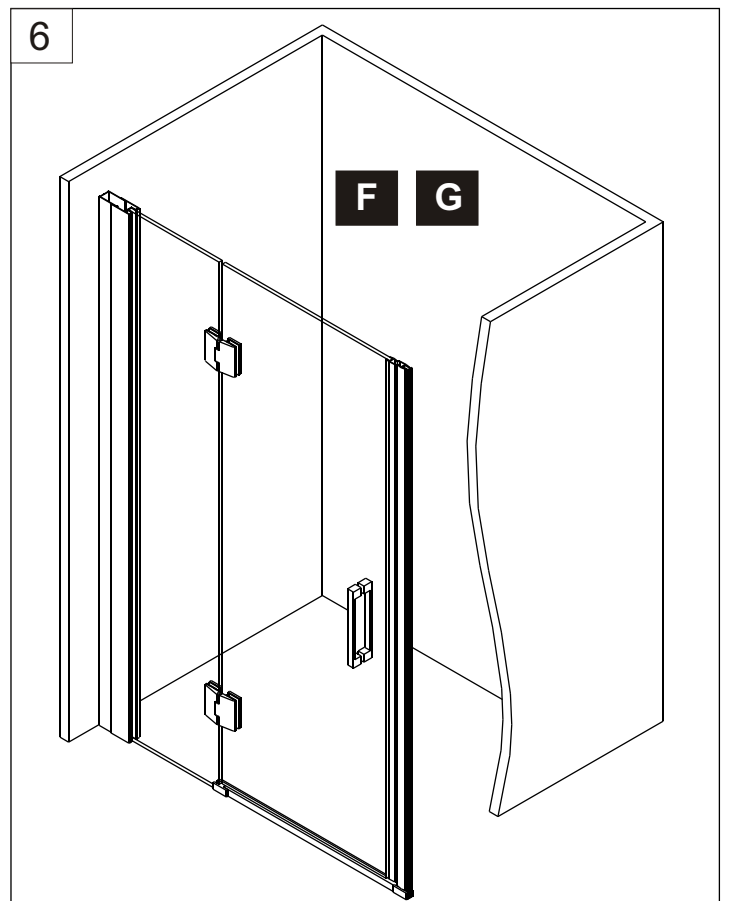
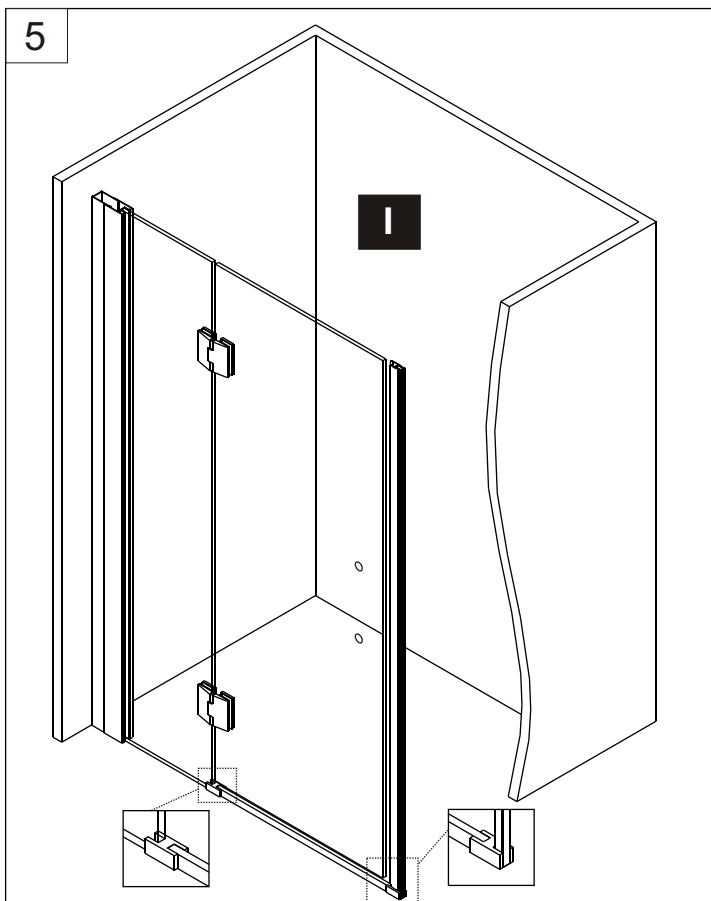
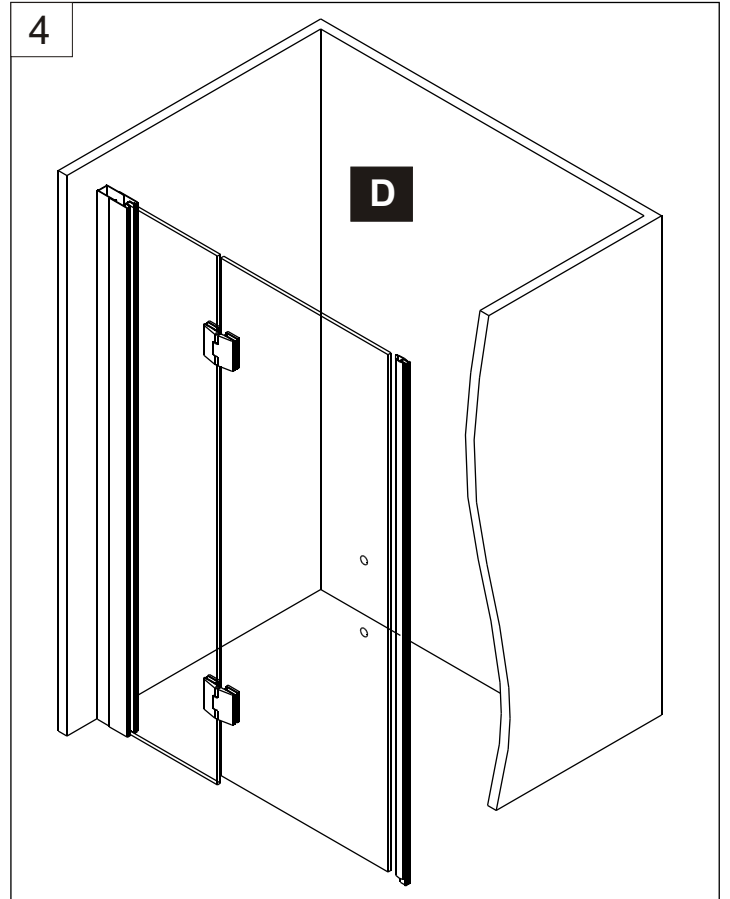
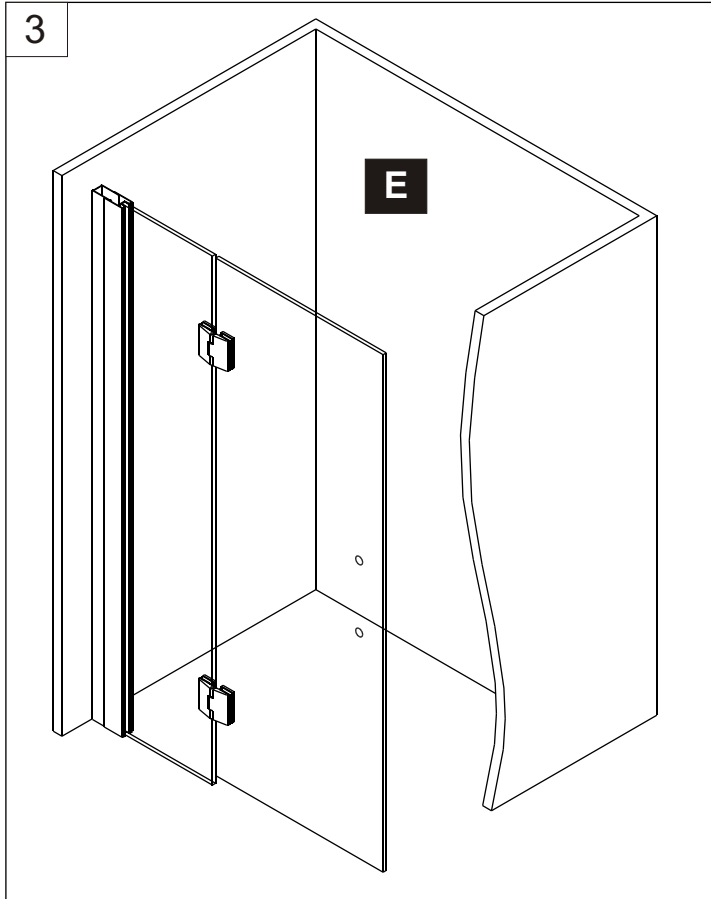


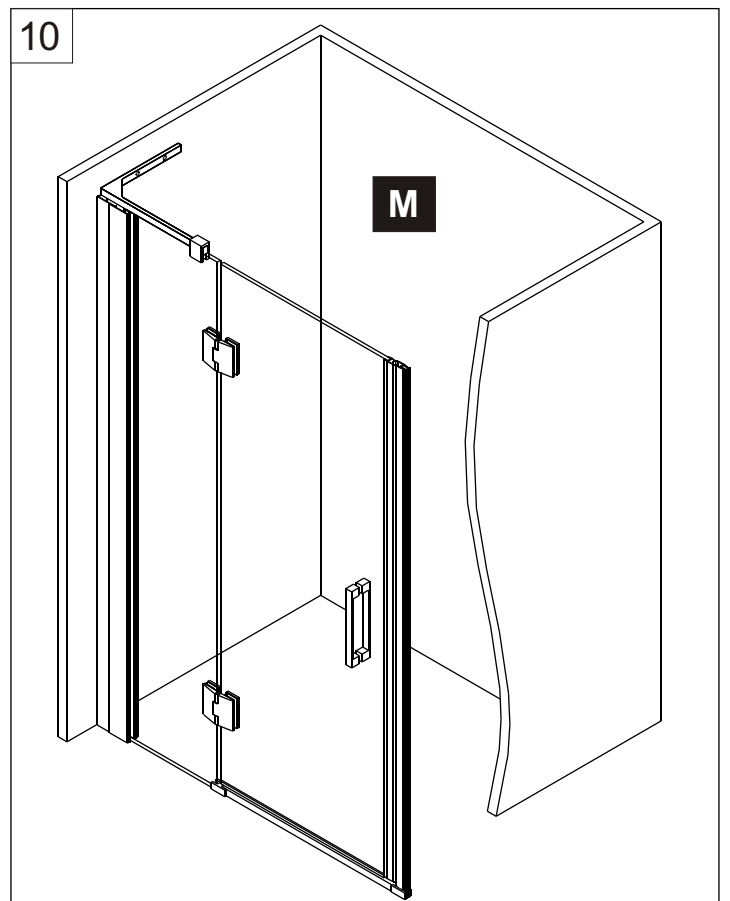
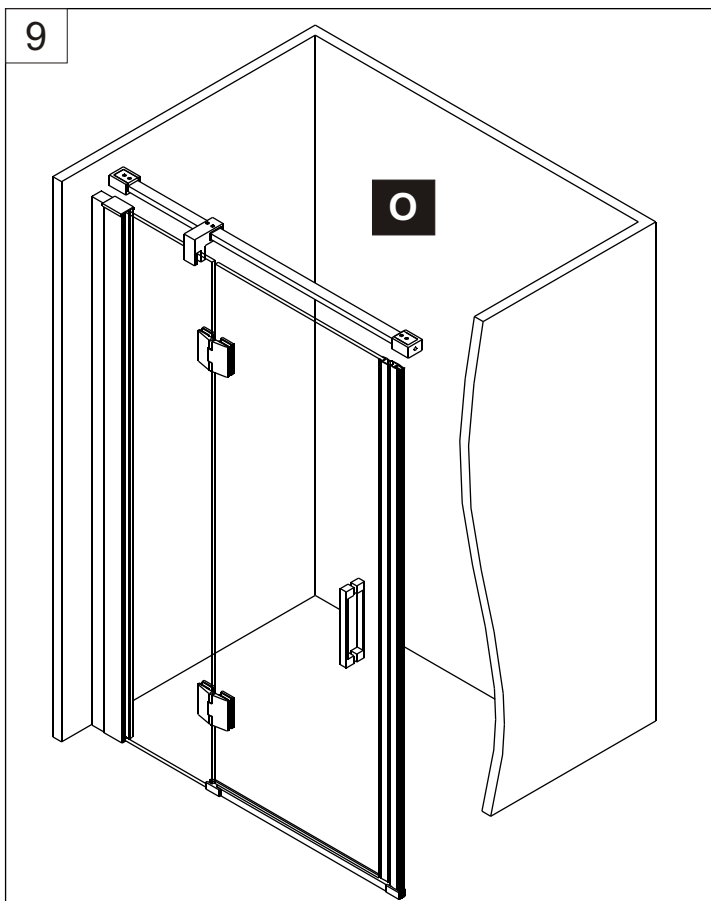
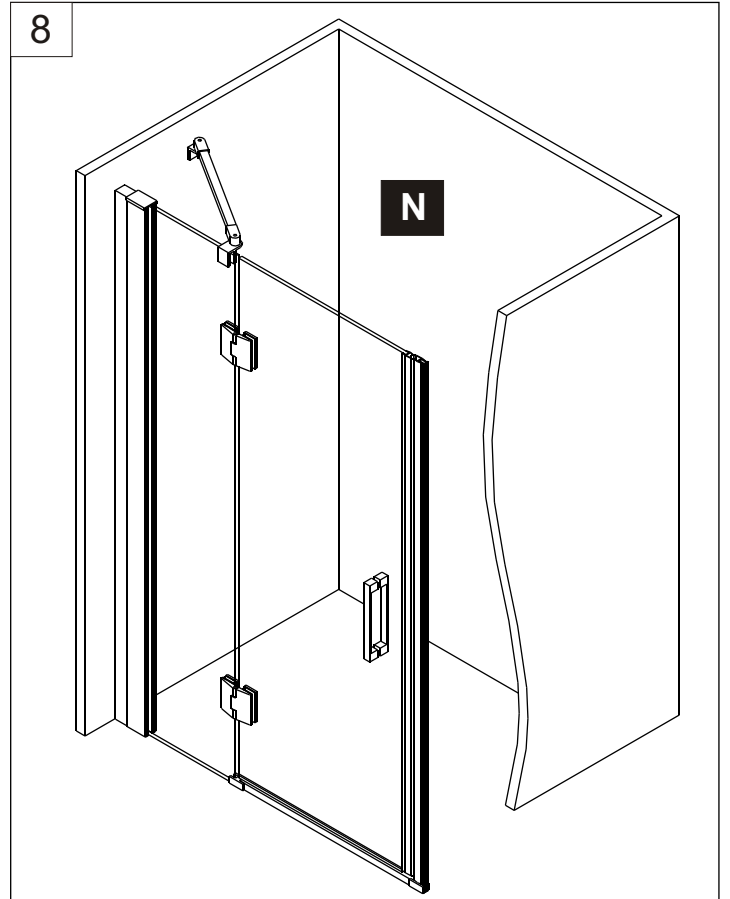
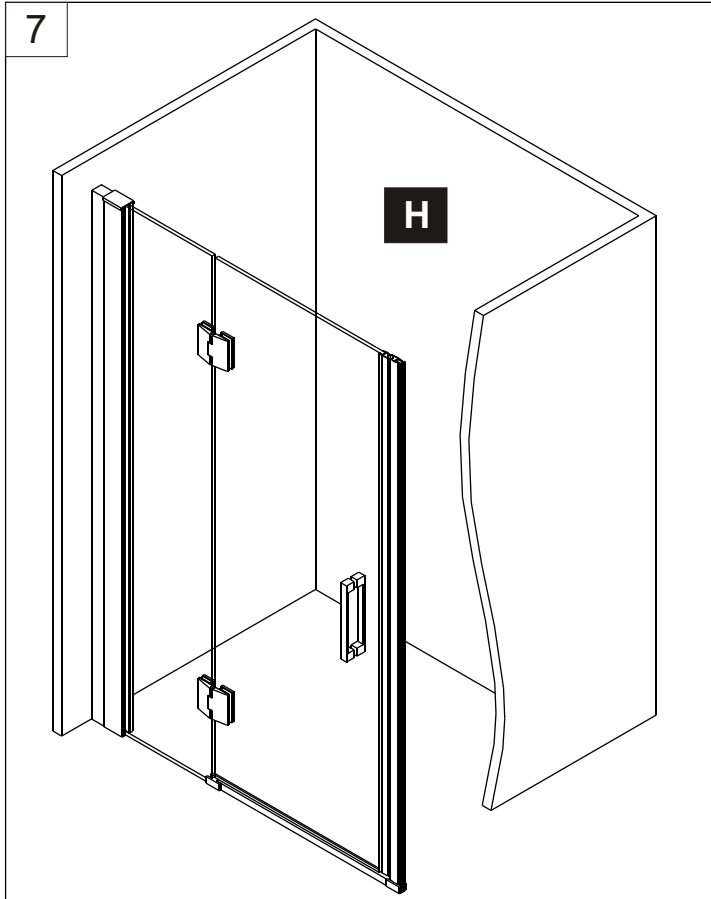
R. 1716+1718 BARRA A LATERAL FIJO

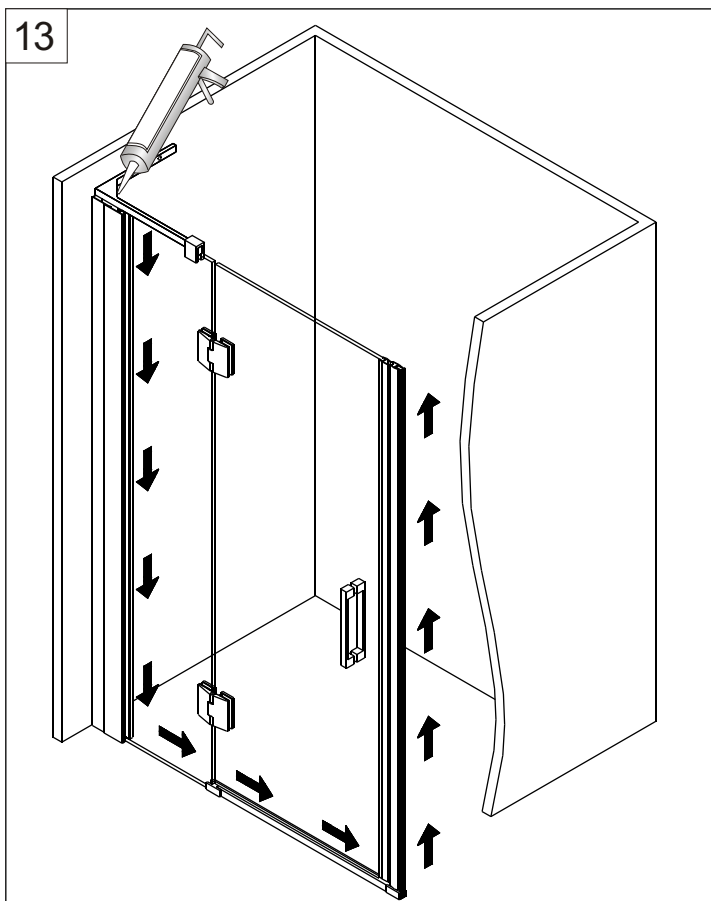
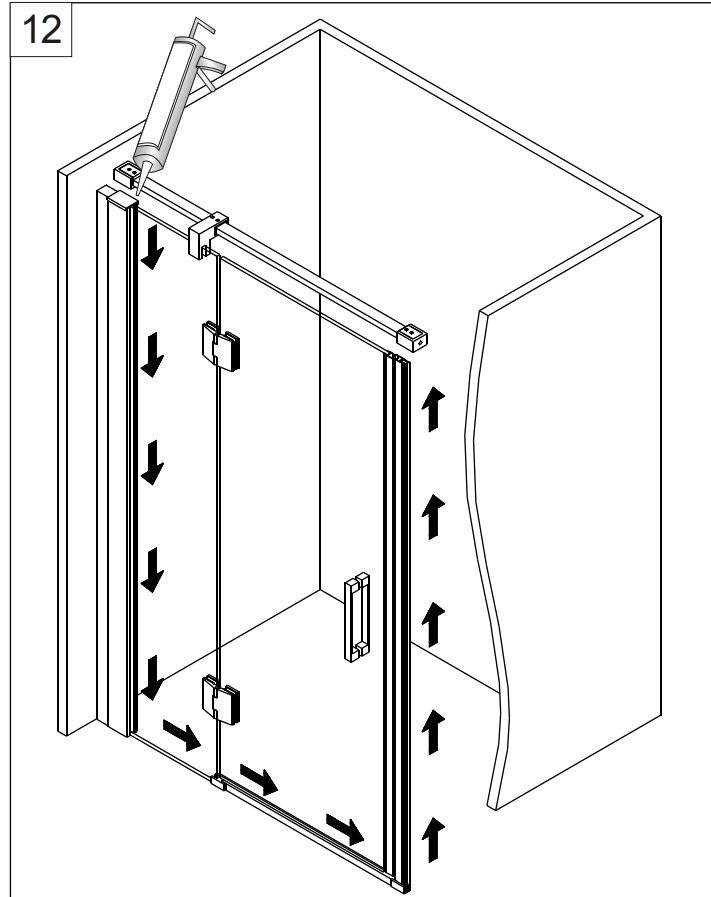
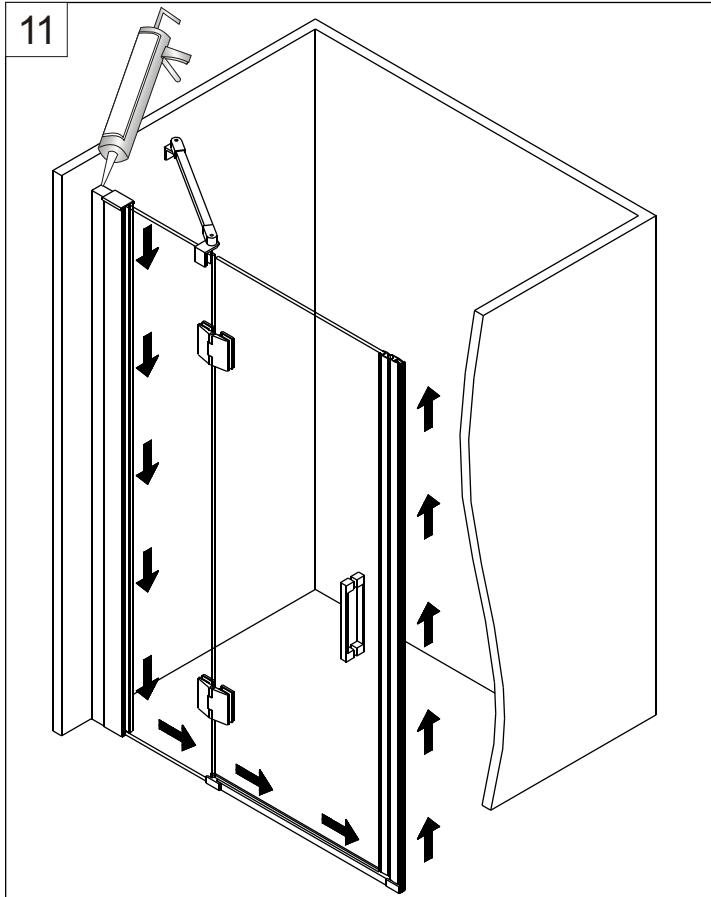


COMBI FIJO + PUERTA

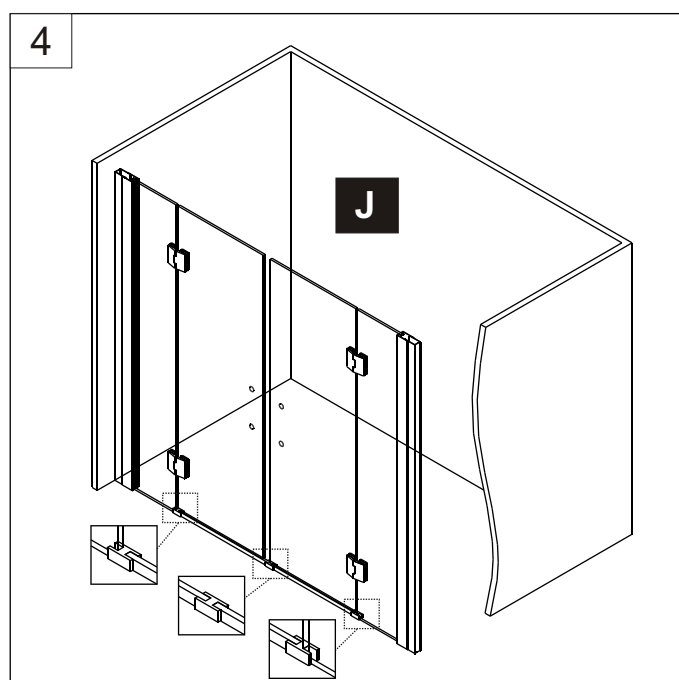
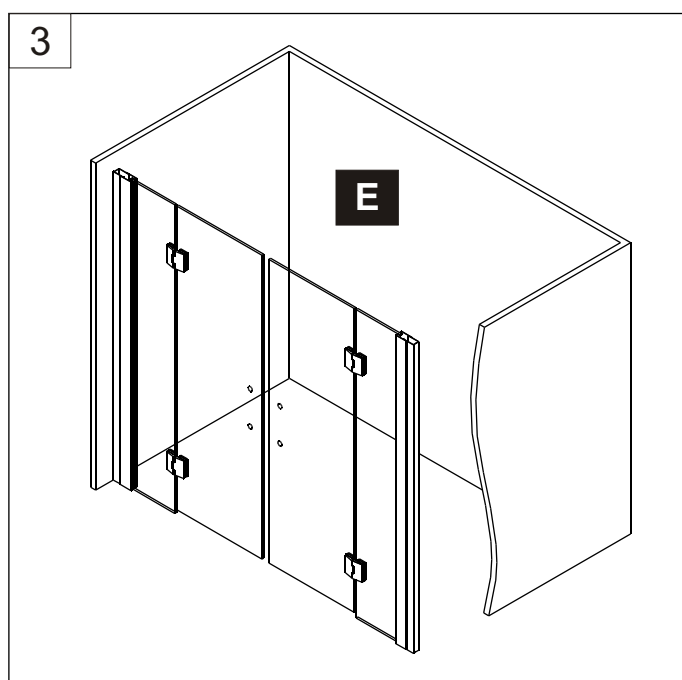
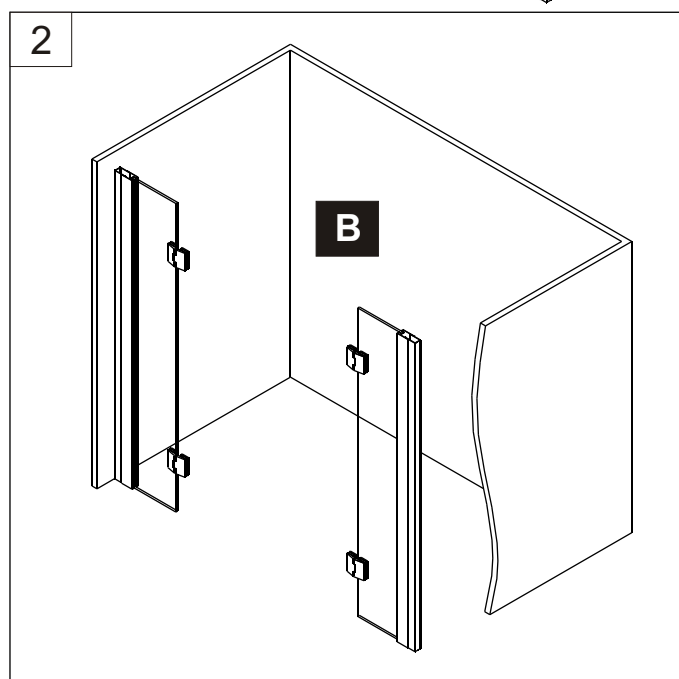
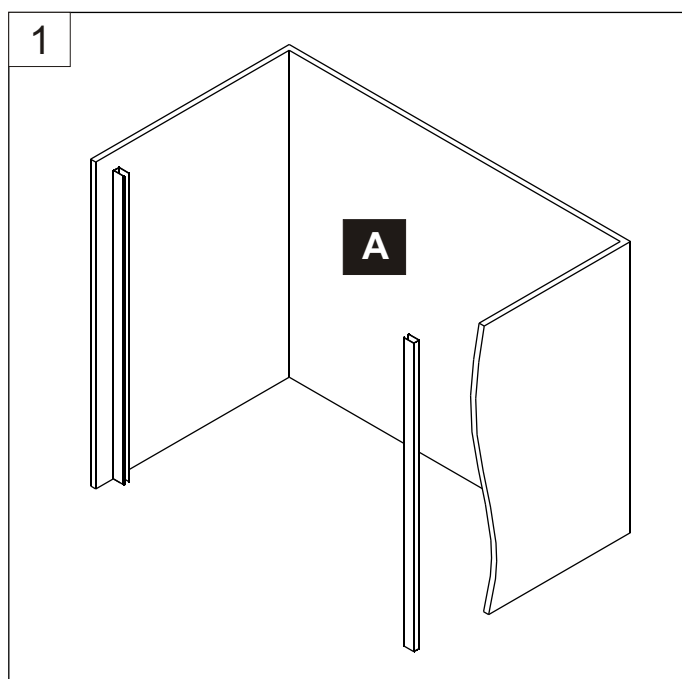
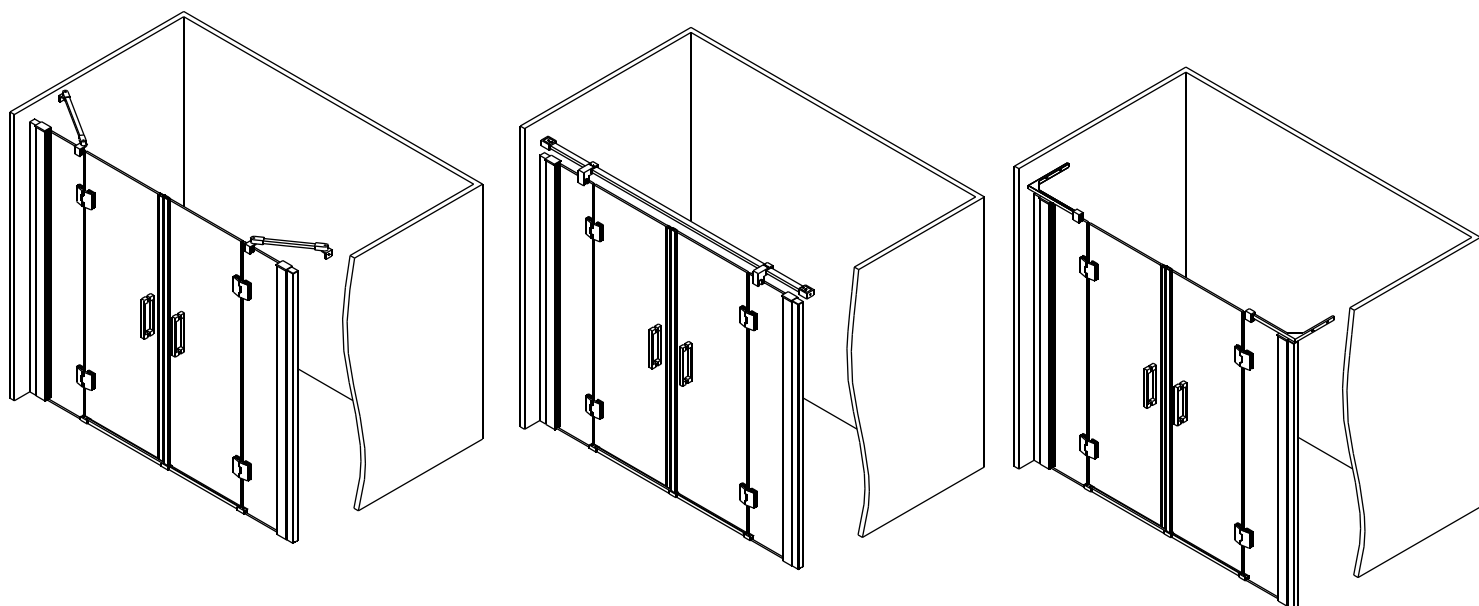


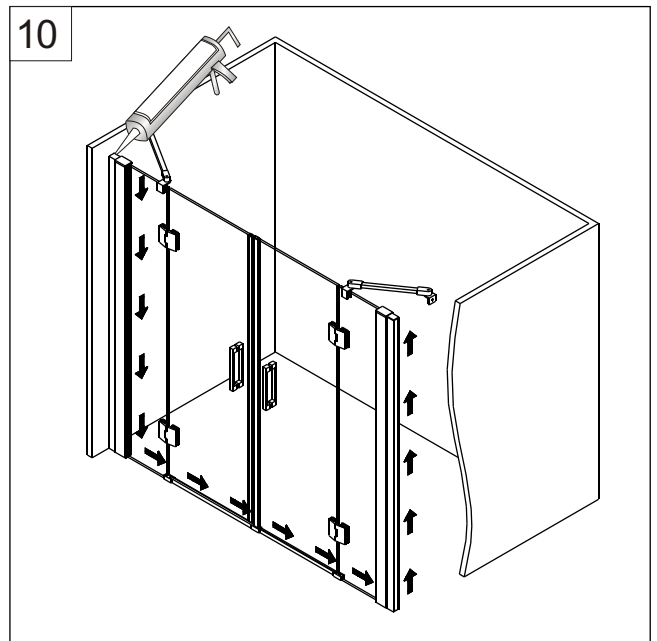
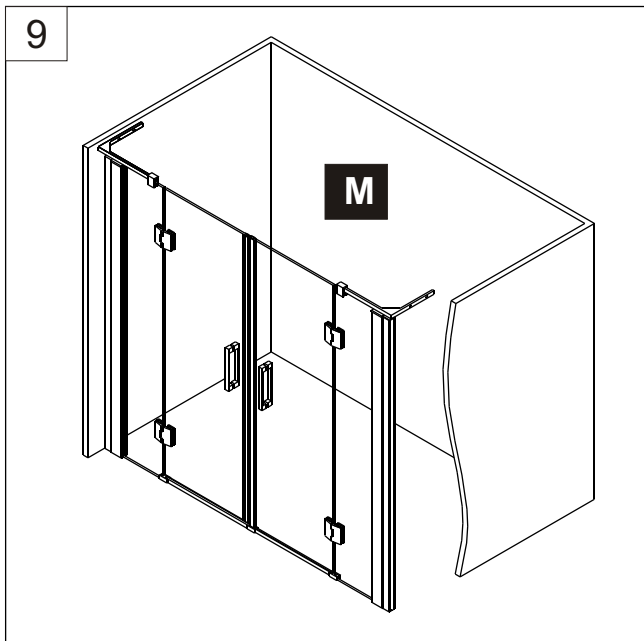
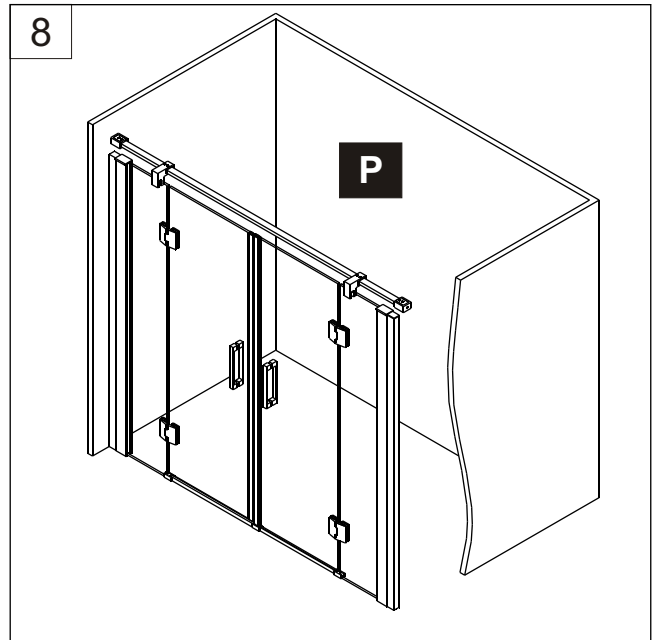
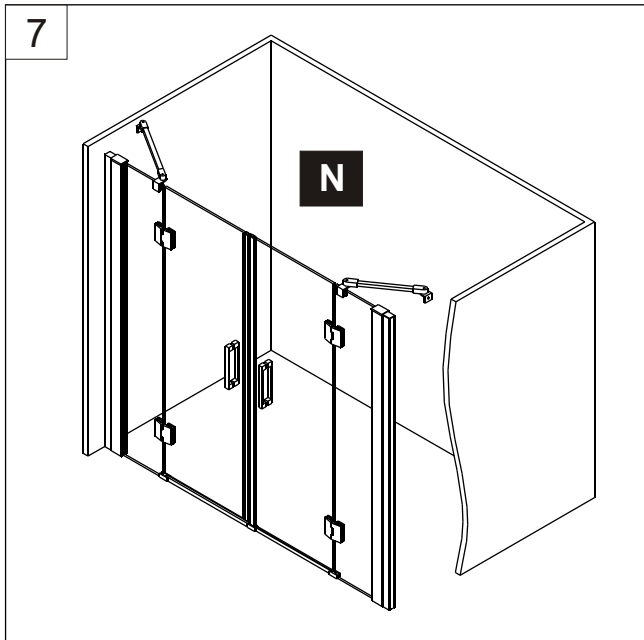
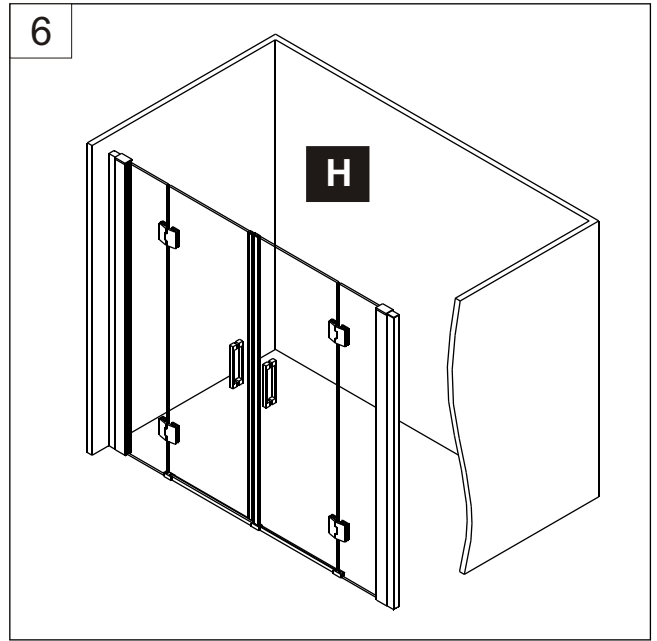
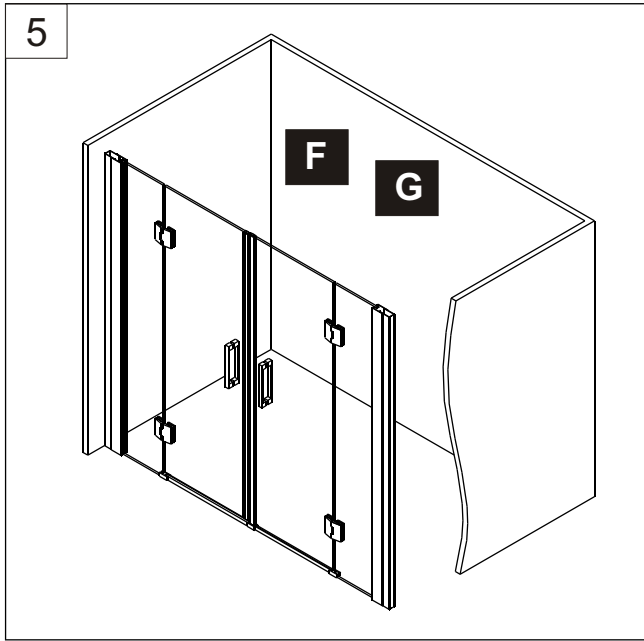




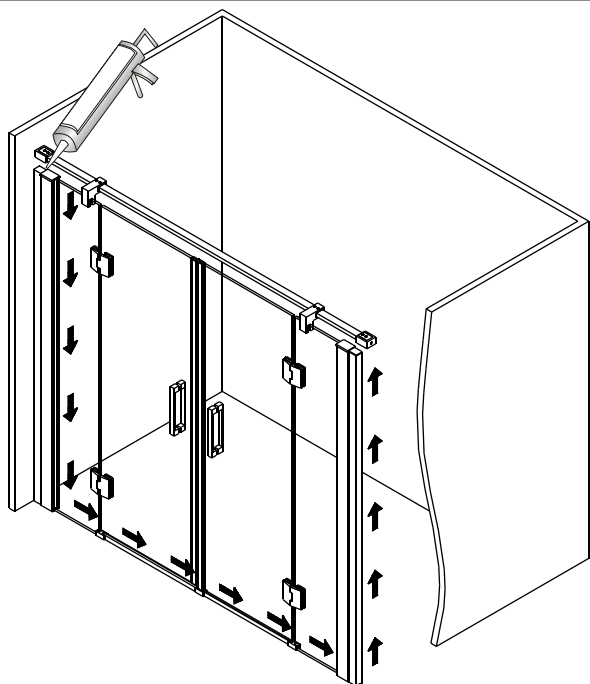


COMBI 2 FIJOS 2 PUERTAS

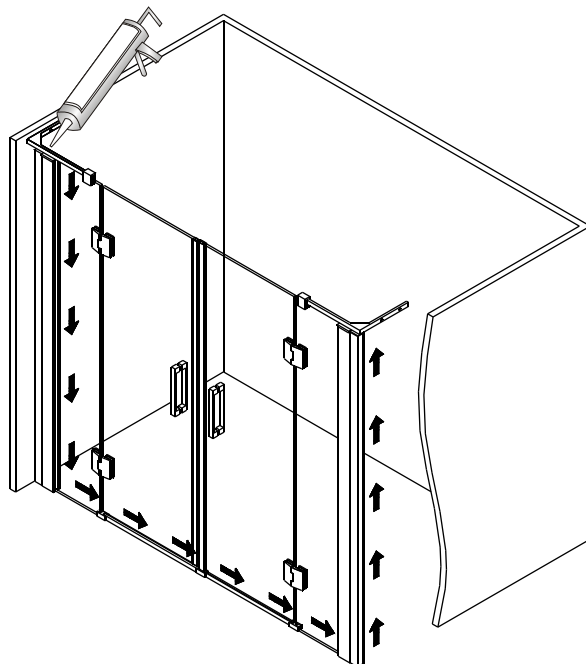




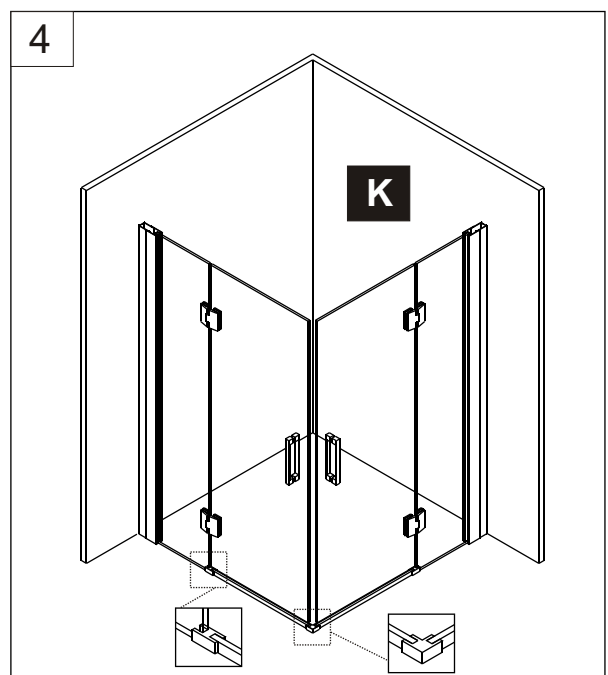
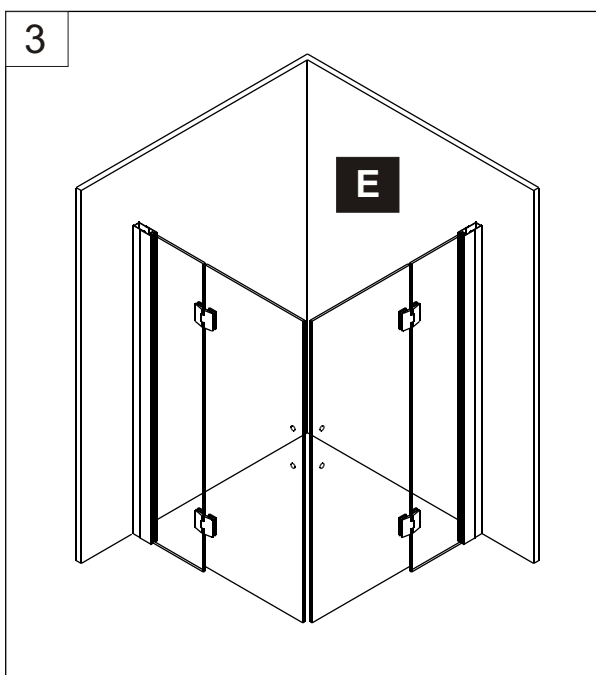
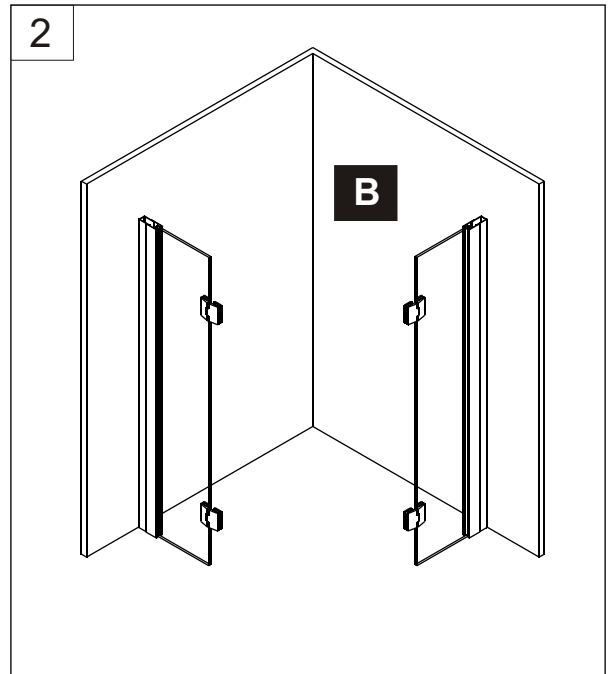
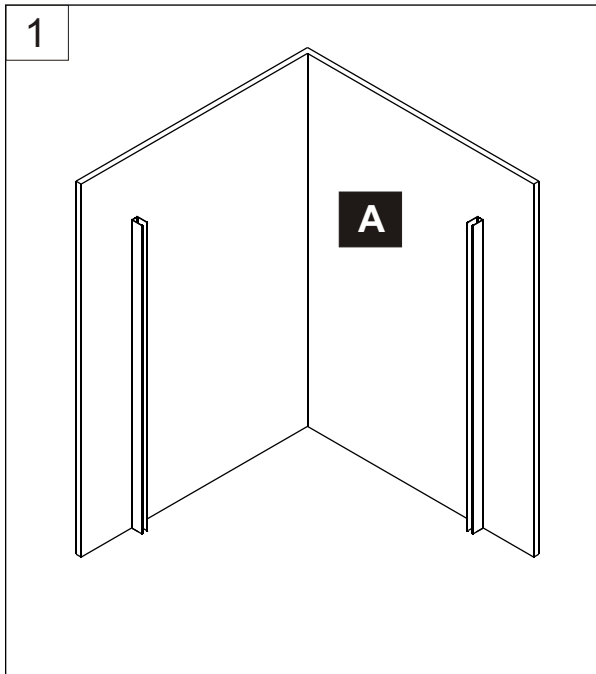
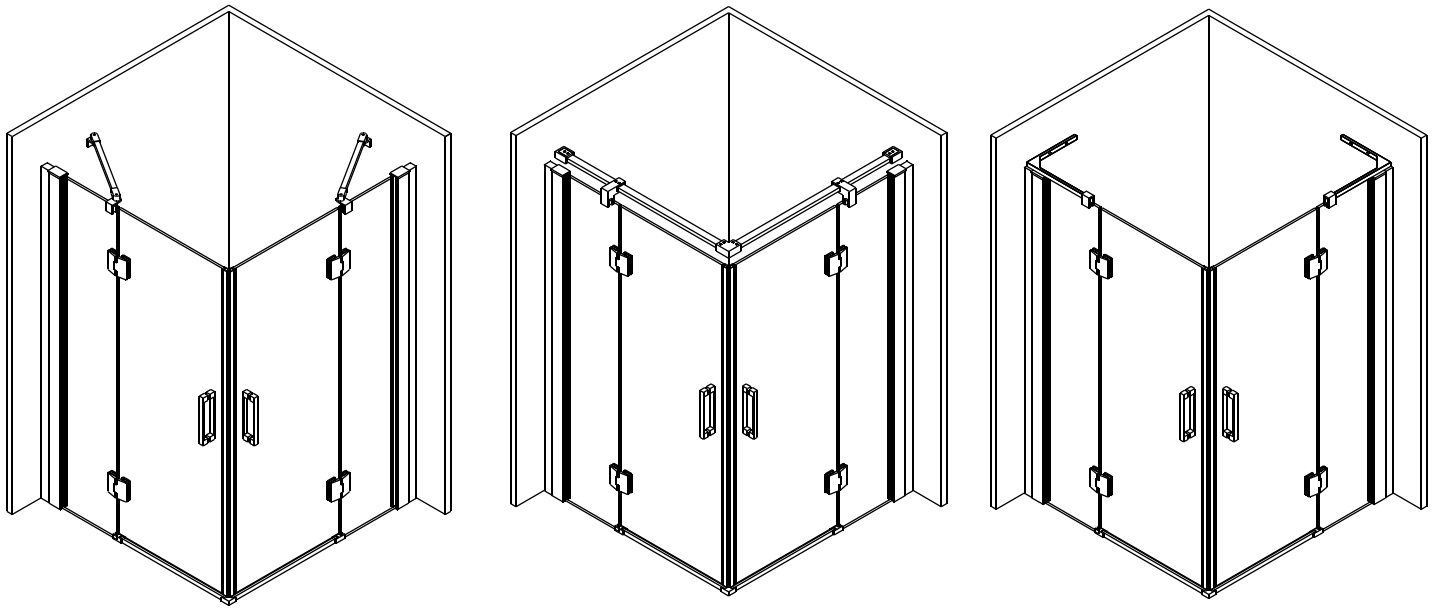
11

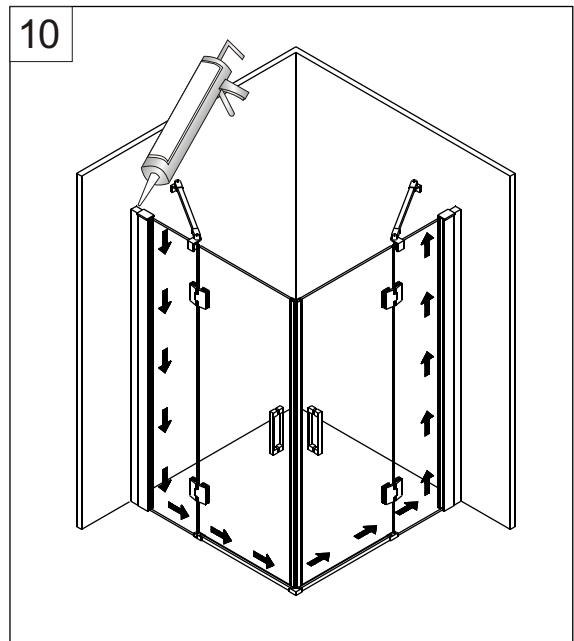
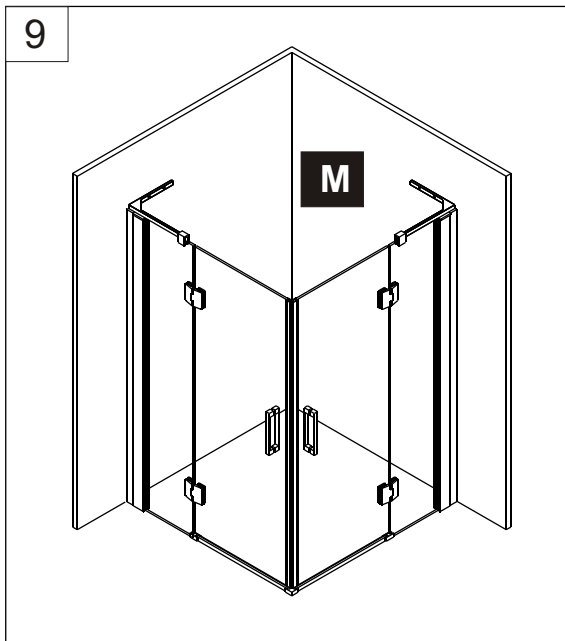
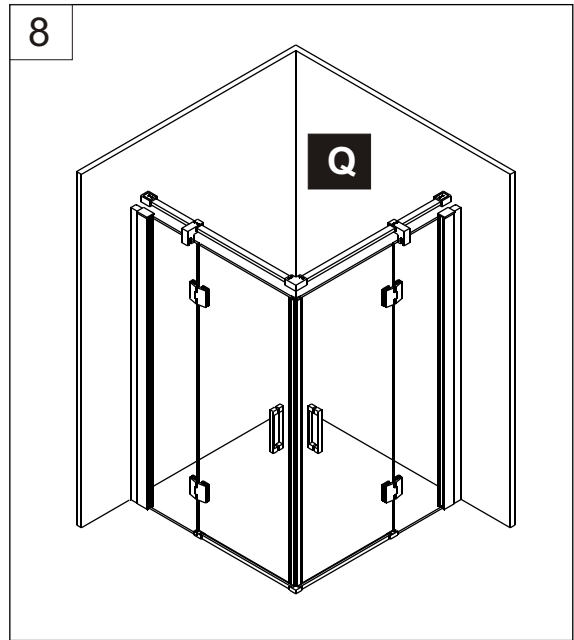
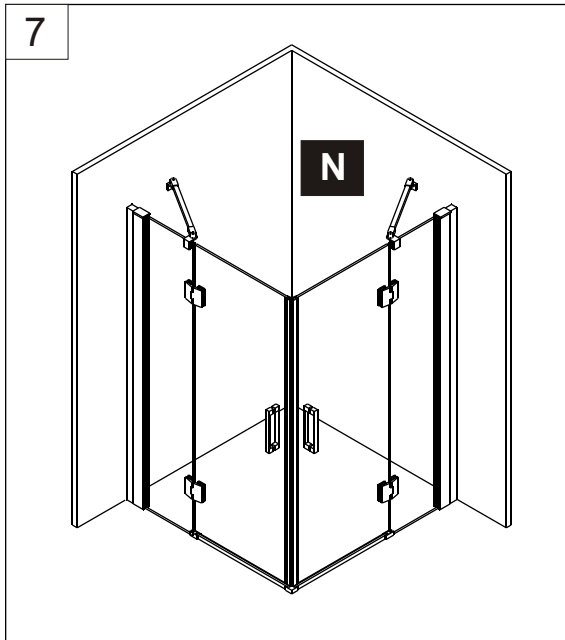
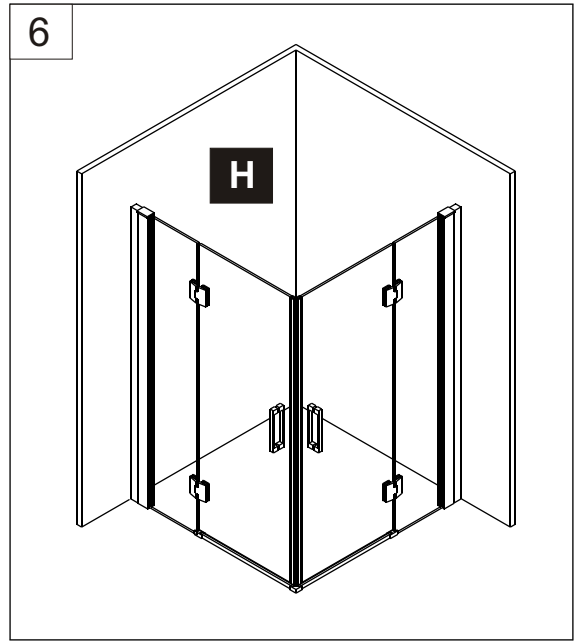
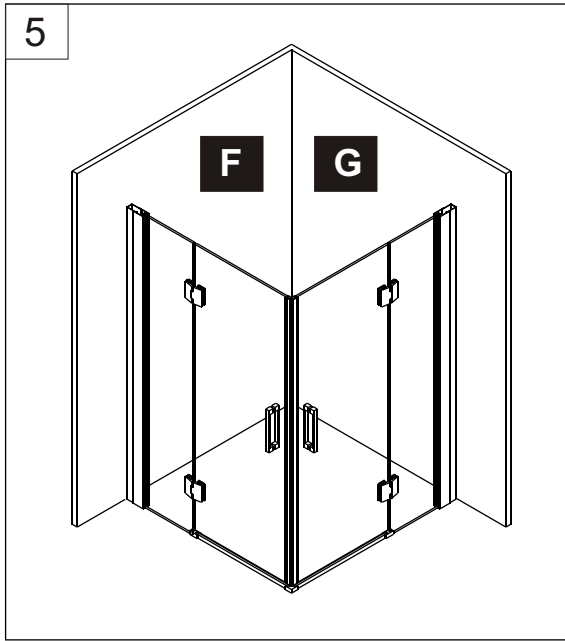


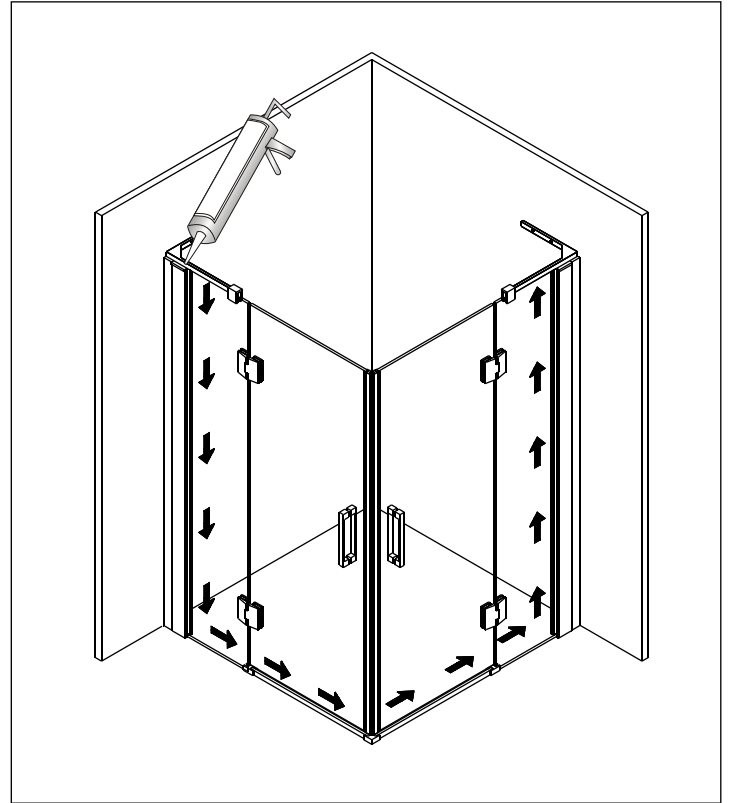
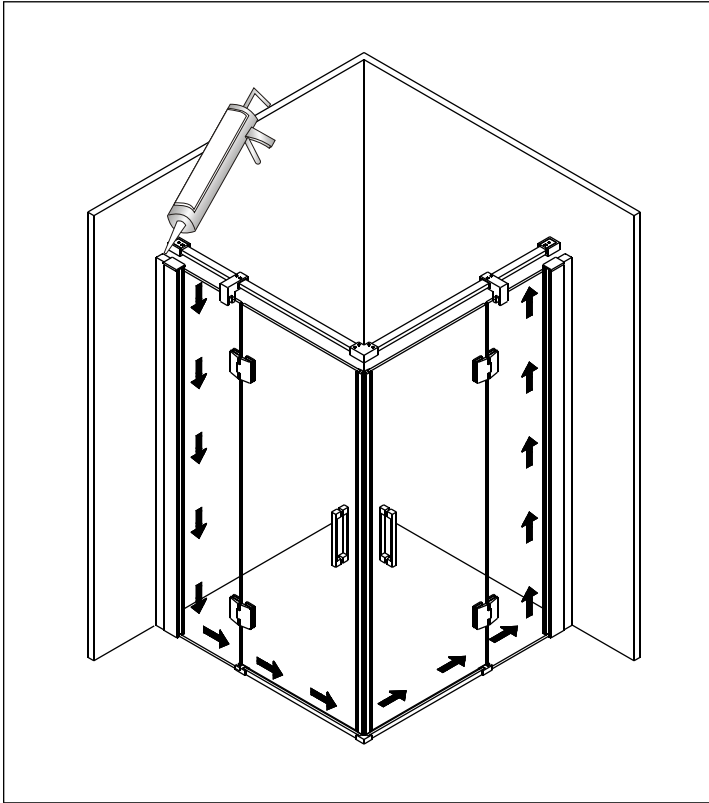
12



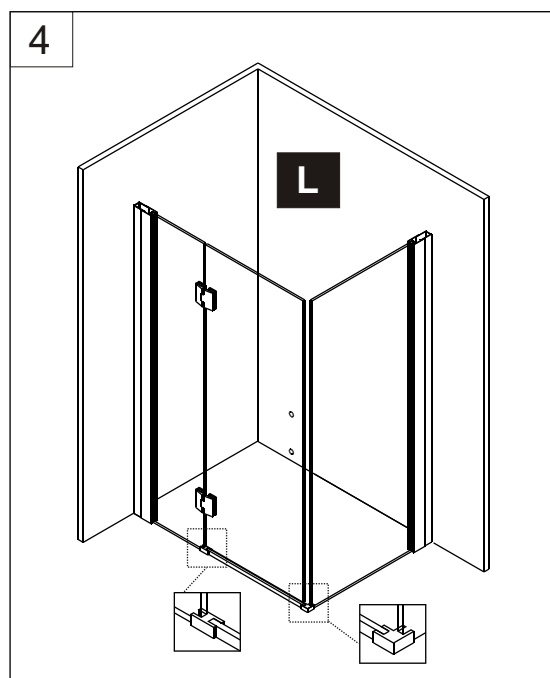
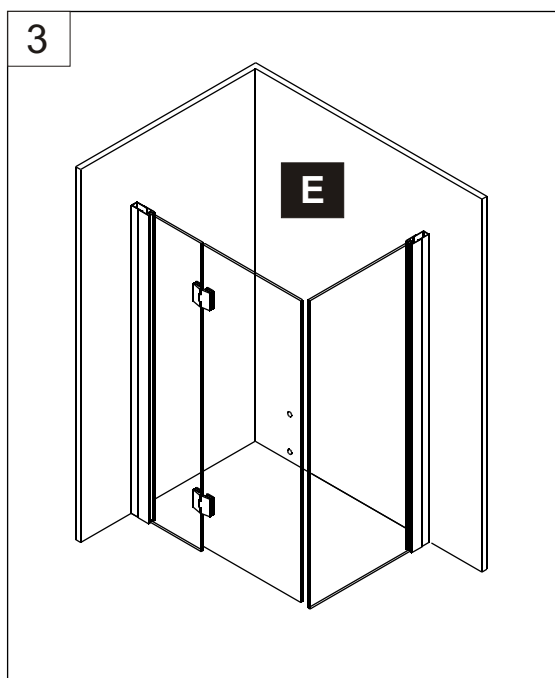
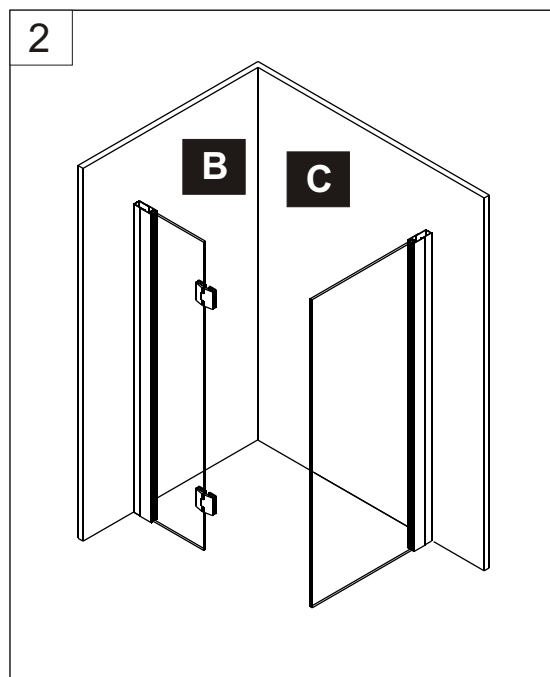
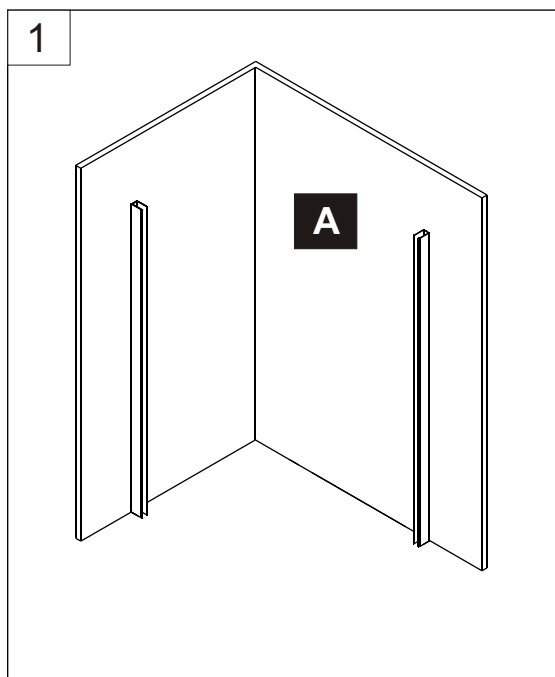
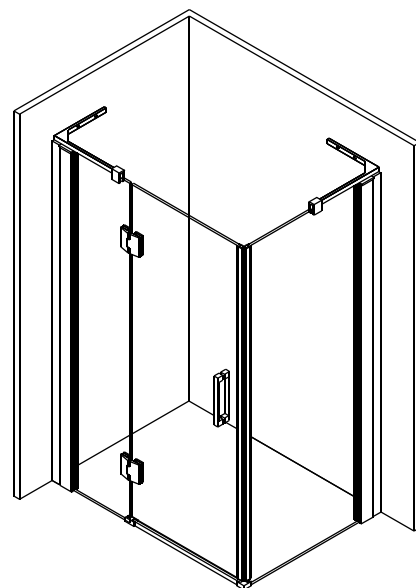
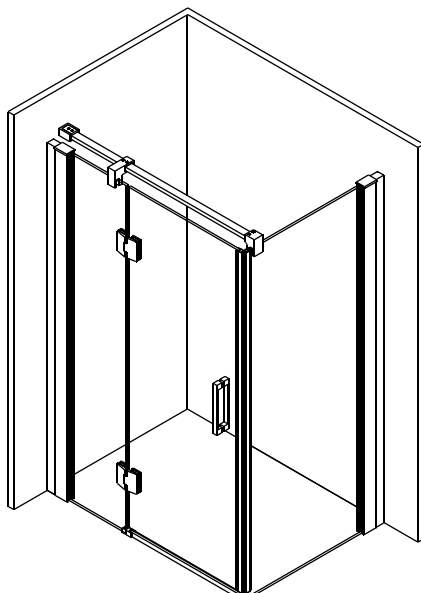
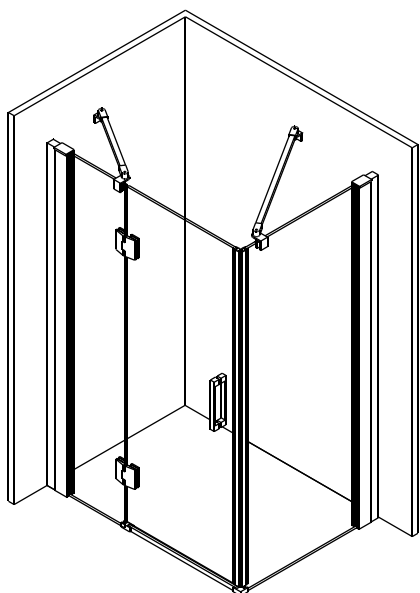
COMBI APERTURA VERTICE

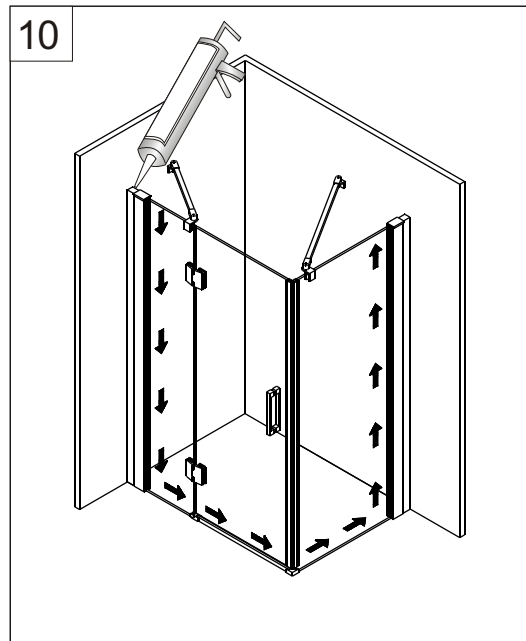
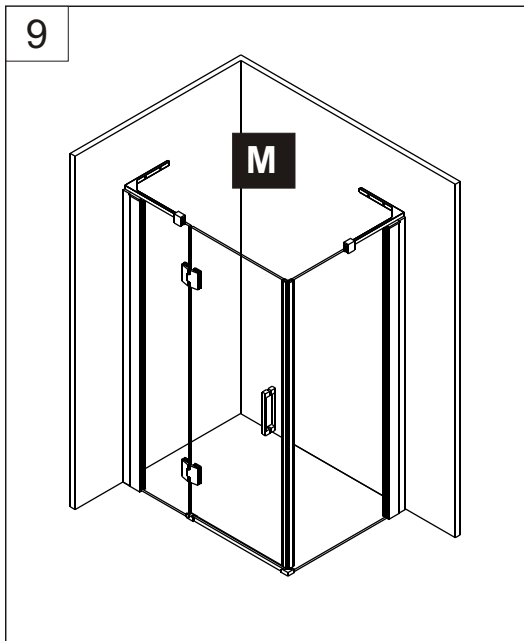
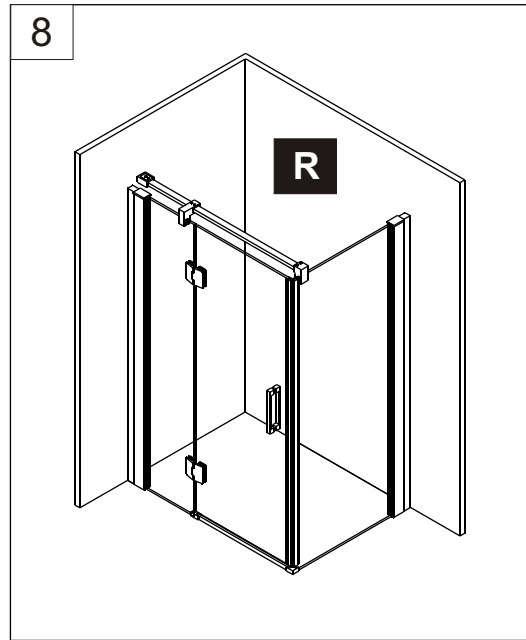
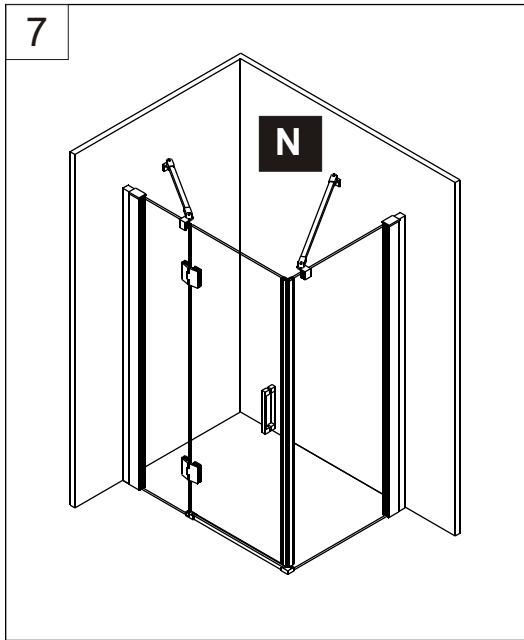
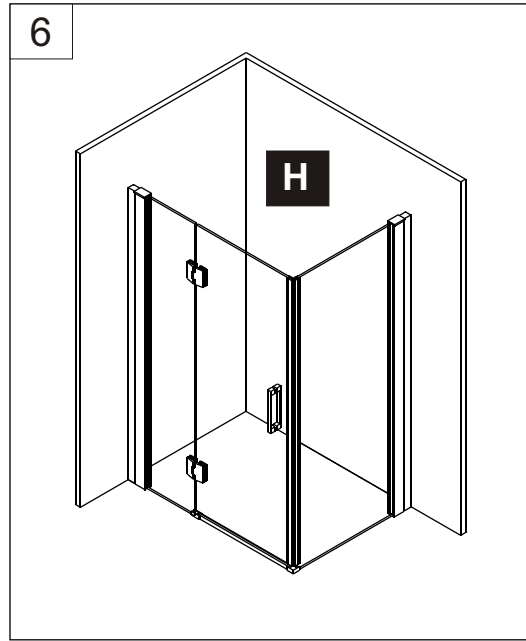
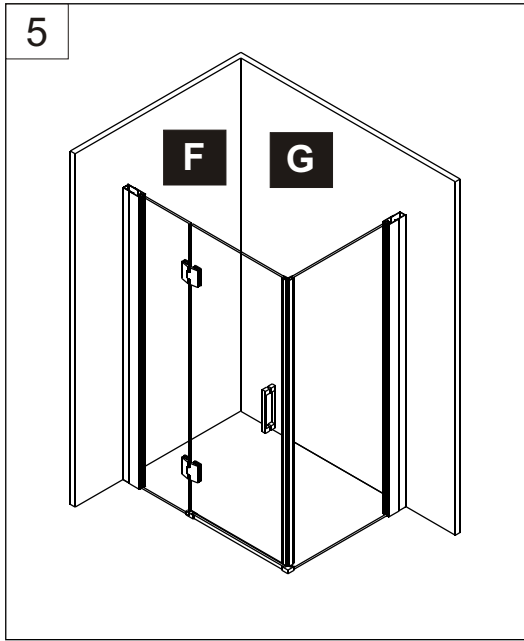


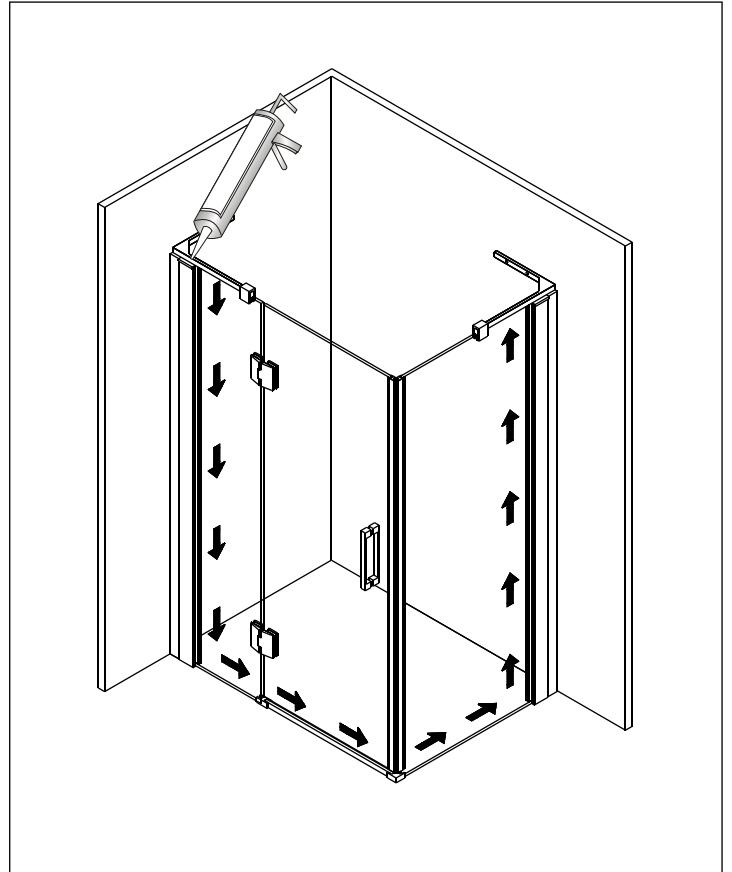
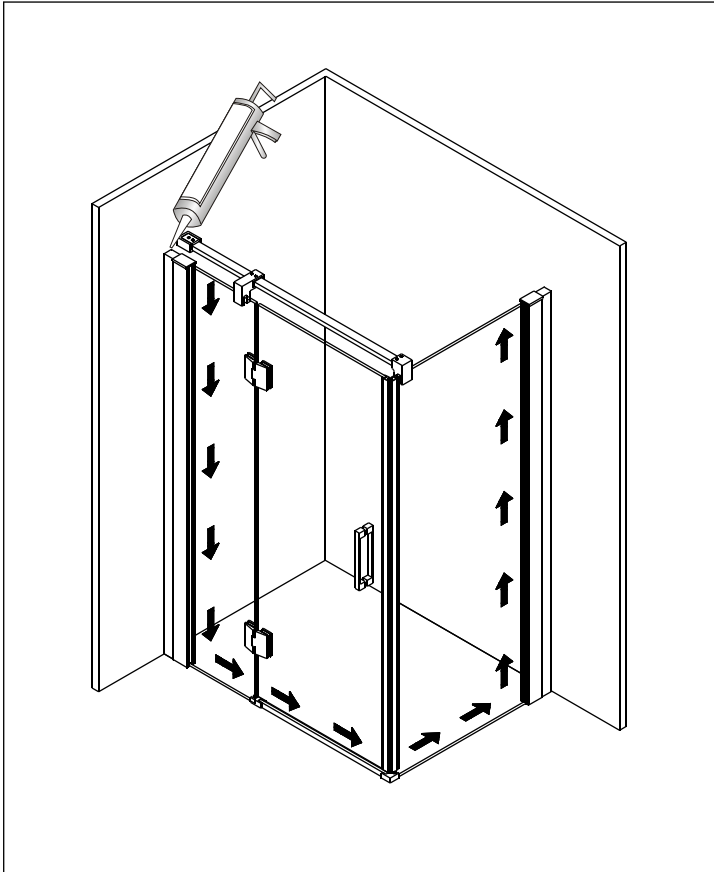




COMBI CON LATERAL FIJO GLASS







GME DIVISION BAÑOS S.L

C\ Pinaeta,6
Pq. Ciudad Mudeco
46930 - Quart Poblet
(Valencia) -España

telf. 00 34 96 252 18 55
fax 00 34 96 252 18 56
info@gmelovente.com
www.gmelovente.com

GME
DIVISIÓN BAÑOS