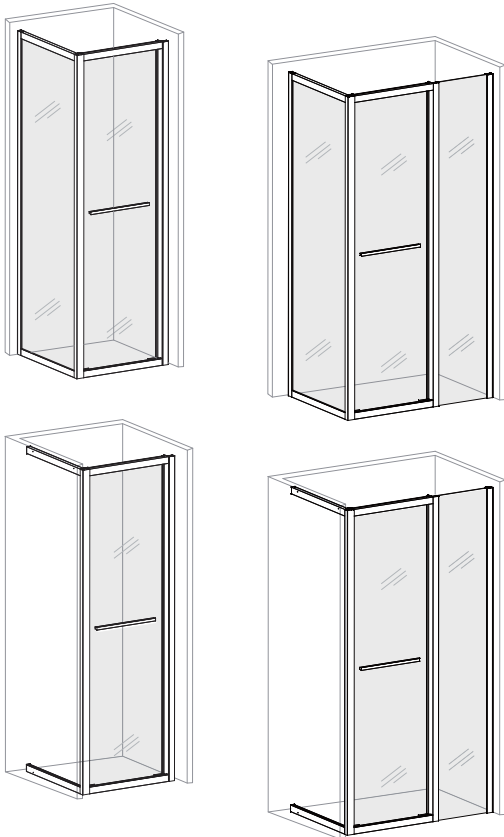


CE CE
EN14428 EN12150

GME
DIVISION BAÑOS

- ES** Todas las mamparas han sido diseñadas y fabricadas de acuerdo con EN14428
Todos los cristales utilizados en nuestros productos están certificados y probados de acuerdo con EN12150
- EN** All shower products are designed and manufactured according to EN14428
All the glass used on the product are certified and tested according to EN12150
- FR** Toutes les parois ont été conçues et fabriquées conformément à EN14428
Toutes les verres utilisés dans nos produits sont certifiés et testés conformément à EN12150
- IT** Tutti i box doccia sono stati disegnati e fabbricati in accordo con EN14428
Tutti i cristalli utilizzati nei nostri prodotti sono certificati e collaudati in accordo con EN12150



COMBINACIONES MODELO SPAZIO



IMPORTANTE

- ES** La etiqueta de tratamiento antical debe quedar instalada por dentro.
El acabado de serigrafía por fuera.
- EN** The anti-lime treatment sticker must be installed on the inside.
The printing glass finish outside.
- FR** L'étiquette de traitement anticalcaire doit rester installée à l'intérieur.
La finition de la sérigraphie à l'extérieur.
- IT** Il lato in cui è applicata la etichetta del trattamento anti calcare identifica la parte interna del cristallo.
Il lato serigrafato va esternamente.

- ES** MANUAL DE INSTALACIÓN
No tirar. Guardar el manual de instalación para un uso posterior.
- EN** INSTALLATION MANUAL
Do not discard. Save the installation manual for further use.
- FR** MANUEL D'INSTALLATION
Ne pas jeter. Garder le manuel d'installation pour un usage postérieur.
- IT** MANUALE DI INSTALLAZIONE
Non cestinare. Conservare il manuale di installazione per un utilizzo posteriore.

GME ATENCIÓN / ATTENTION

- ES** No utilizar productos de limpieza con componentes ácidos en cristales mate serigrafados o cualquier acabado rugoso. Usar solo jabón pH neutro o alcohol.
! Limpie los accesorios negros con frecuencia para evitar daños en la superficie causados por restos y cal en el agua.
- EN** Don't use abrasive products or cleaning products with acid components in print silked glasses or any rugged decoration. Use normal pH neutral soap or alcohol.
! Wipe the black accessories frequently to avoid the surface damage caused by mineral in water.
- FR** Ne pas utiliser de produits de nettoyage avec des composés acides dans les verres mats sérigraphiés ou n'importe quel finition rugueuse. Utiliser uniquement savon pH neutre ou alcool.
! Essuyez souvent les accessoires noirs pour éviter les dommages causés à la surface par les minéraux dans l'eau.
- IT** Non usare prodotti di igiene con componenti acidi su cristalli opachi, serigrafati o con qualunque finitura rugosa. Utilizzare unicamente sapone pH neutro o alcool.
! Pulire frequentemente gli accessori neri per evitare il danno superficiale causato dal minerale nell'acqua.



- ES** Vinagre / Antical / Detergente
- EN** Vinegar / Anti-lime / Detergent
- FR** Vinaigre / Anticalcaire / Détergent
- IT** Aceto / Anti calcare / Detergente



- ES** Jabón pH neutro / Alcohol
- EN** pH neutral soap / Alcohol
- FR** Savon pH neutre / alcool
- IT** Sapone pH neutro / Alcool



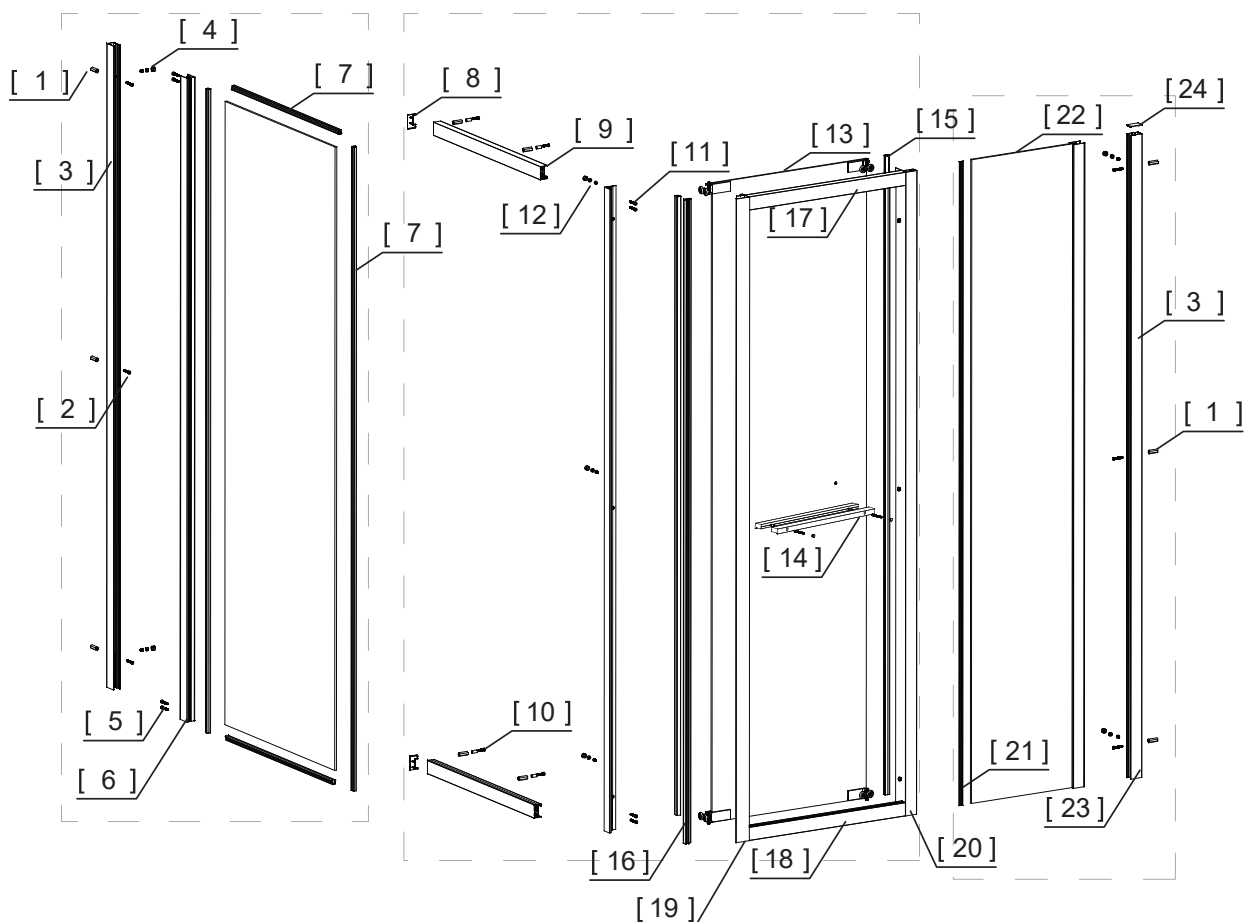
IMPORTANT INFORMATION / INFORMACIÓN IMPORTANTE / INFORMATIONS IMPORTANTES / INFORMAZIONI IMPORTANTI

- EN** • Always wear safety goggles and work gloves when installing or disassembling this product, especially when working with glass panels.
- When handling, never rest the corner of the glass directly on the floor or hit the corner with any object. This can cause the glass to break.
- Always have two persons to install or disassemble the shower.
- Small children should never use the shower unsupervised or without proper instructions for safety use.
- Small children should never hit, lean, or hang on the shower product. Nor should they do any inappropriate activity in the vicinity of the shower.
- Tempered safety glass is designed to shatter into small tiny pieces when the glass is broken, this is to avoid serious injury.

- ES** • Llevar gafas y guantes de seguridad durante la instalación o desmontaje de este producto, especialmente durante la manipulación de los cristales
- Durante la manipulación, nunca dejar descansar las esquinas de los cristales directamente en el suelo o golpearlos con cualquier objeto. Puede provocar la rotura del cristal
- Es conveniente que la instalación o el desmontaje sea llevado a cabo por dos personas.
- Los niños no deben usar la ducha sin supervisión o sin apropiadas instrucciones de uso para sus seguridad
- Los niños no deben, bajo ningún concepto, golpear, apoyarse o colgarse de los productos de ducha. De la misma manera, deberán realizar actividades inapropiadas en las inmediaciones de la mampara.
- El cristal templado de seguridad ha sido diseñado para romper en pequeñas piezas con el objetivo de evitar daños mayores

- FR** • Porter des lunettes et des gants de sécurité aux cours de l'installation de ce produit, en particulier pendant la manipulation des verres.
- Pendant la manipulation ne jamais laisser reposer les coins des verres directement par terre ou les choquer avec n'importe quel objet. Cela peut provoquer la brisure du verre.
- Il est souhaitable que l'installation ou le déemballage soit réalisé par deux personnes.
- Les enfants ne doivent pas, en aucun cas, choquer, s'appuyer ou se pendre des produits de douche. De la même manière ils ne devront pas réaliser des activités inappropriées à proximité de la paroi.
- Le verre tempéré de sécurité a été conçu pour casser en petites pièces afin d'éviter de plus grands dommages.

- IT** • Indossare occhiali e guanti protettivi durante l'installazione o smontaggio di questo prodotto, specialmente durante la manipolazione dei cristalli.
- Non appoggiare mai gli angoli dei cristalli direttamente al suolo o colpirli con qualunque oggetto durante la manipolazione. Il cristallo potrebbe rompersi.
- È conveniente che l'installazione o lo smontaggio siano eseguiti da due persone contemporaneamente.
- I bambini non devono usare la doccia senza la supervisione di un adulto o senza le dovute istruzioni di sicurezza
- I bambini non devono colpire, appoggiarsi o appendersi agli elementi della doccia. Non dovranno, inoltre, realizzare attività inappropriate in prossimità del box doccia.
- Il cristallo temperato di sicurezza è stato disegnato affinché si rompa in piccoli pezzi onde evitare danni maggiori.



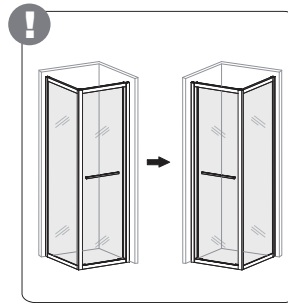
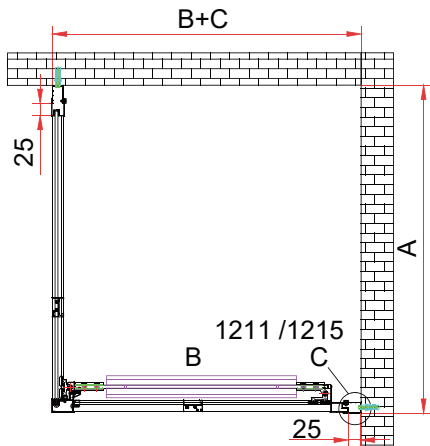
#	Description/Descripción	#	Description/Descripción
01	Plastic plugs For Spazio / Open	13	Door panel with wheel set
02	ST4x35mm screw set for wall	14	Handle set
03	Wall jamb fix panel	15	Gasket on door
04	ST4x13mm screw set for connecting	16	Magnetic gasket set
05	ST4x35mm screw set for fix panel	17	Upper door frame profile
06	Connecting profile for fix panel	18	Lower door frame profile
07	U shape gasket for fix panel	19	Closing door frame profile
08	Decoration cover set for rail profile	20	Connecting door frame profile
09	Rail profile for fix panel	21	Single side gasket for Spazio / Open (Fix) 1950mm
10	ST4x35mm screw set for fix panel rail profile	22	Fix panel with conneting profile for Spazio / Open
11	ST4x35mm screw set for rail profile connecting	23	Wall profile for Spazio / Open (Fix)
12	ST4x13mm screw set for door connecting profile	24	Plastic Cover ForSpazio / Open

COMBINACIONES/COMBINATIONS

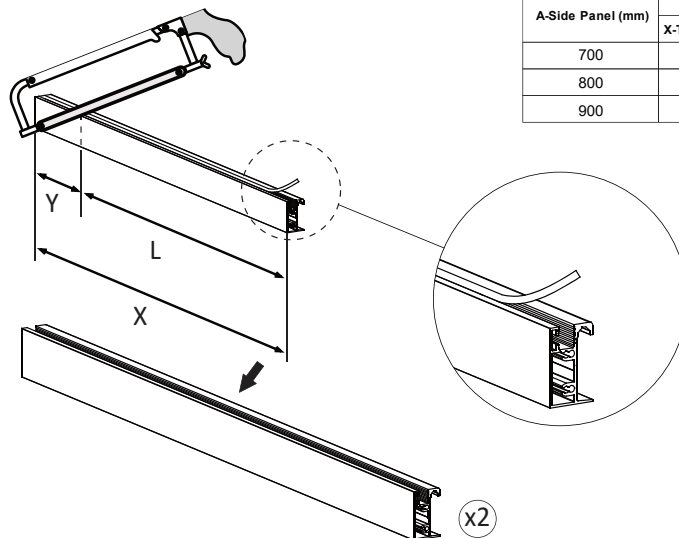
COMBI A + LAT.FIJO / COMBI A + SIDE PANEL



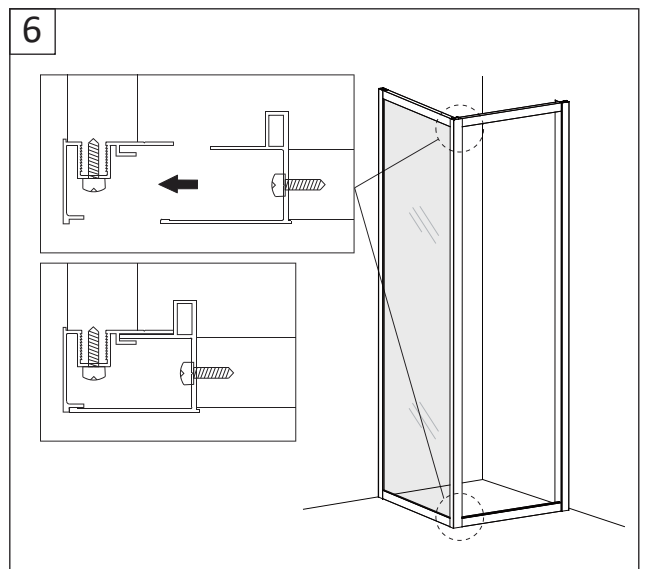
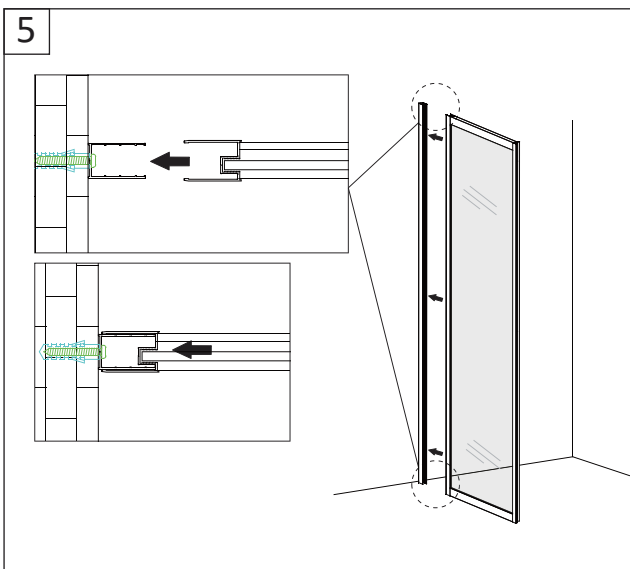
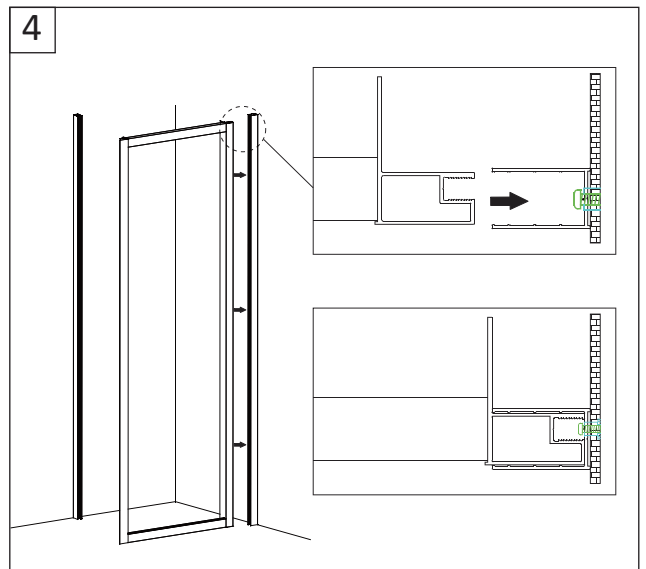
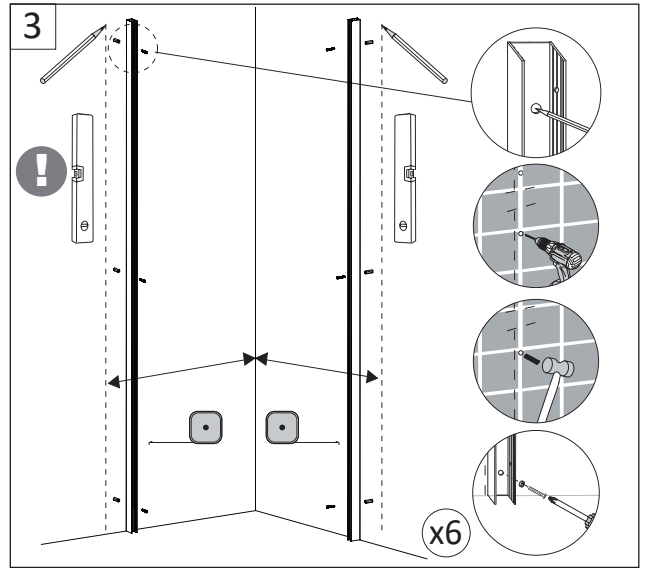
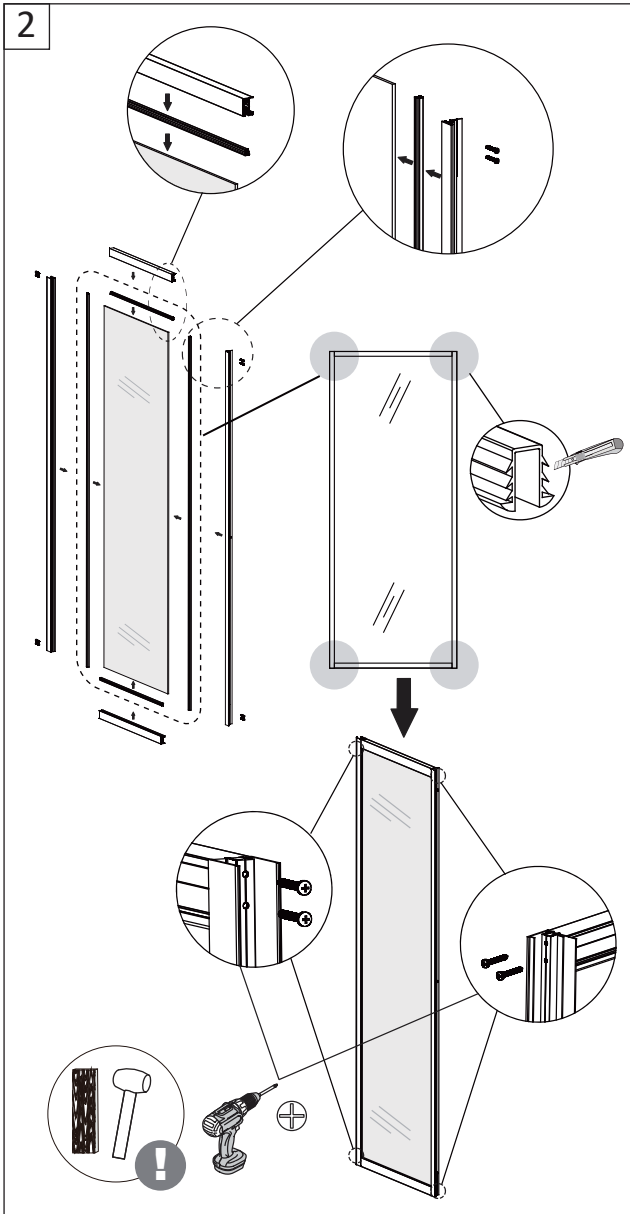
Size of Enclosure A x (B+C)(mm)	A-Side Panel (mm)	B-Door (mm)	Maxmium Door Opening without wheel stopper (mm)	Maxmium Door Opening with wheel stopper (mm)	Adjustment Range(A) (mm)	Adjustment Range(B+C) (mm)
700x650	700	650	485	480	665~690	627~652
700x700	700	700	390	390	665~690	682~707
800x650	800	650	485	480	765~790	627~652
800x700	800	700	540	535	765~790	682~707
800x750	800	750	595	590	765~790	737~762
900x650	900	650	485	480	865~890	627~652
900x700	900	700	540	535	865~890	682~707
900x750	900	750	595	590	865~890	737~762



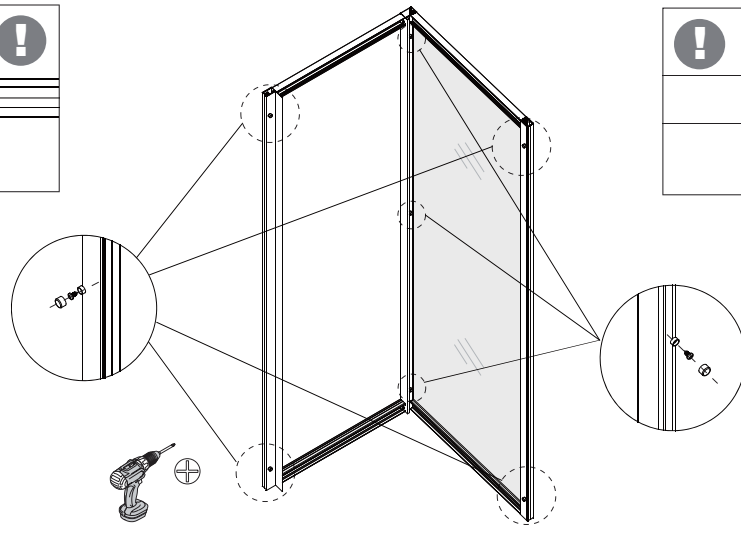
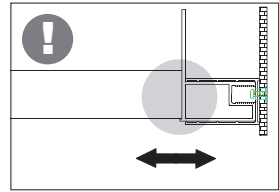
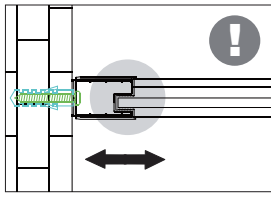
1



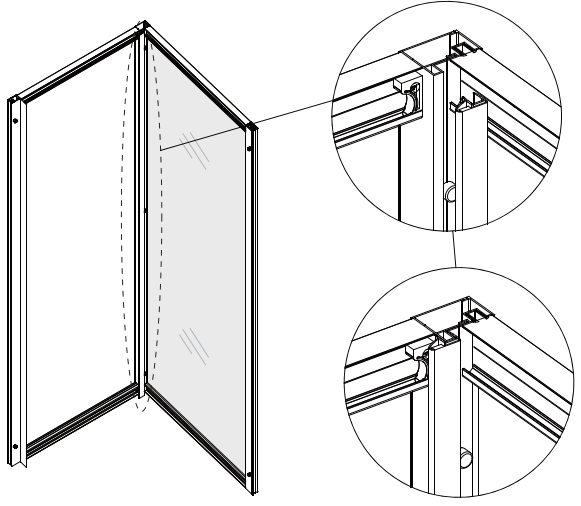
A-Side Panel (mm)	Rail Profile (mm)		
	X-Total Length (mm)	Y-Cutting Length (mm)	L-Objective Length (mm)
700	795	200	595
800	795	100	695
900	795	0	795



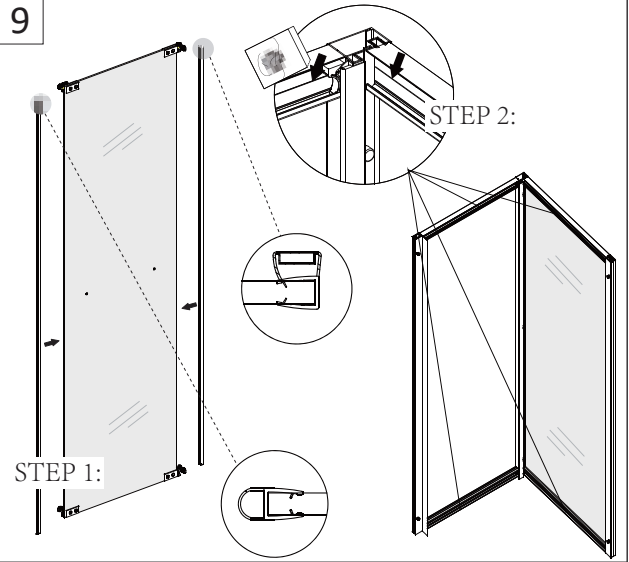
7



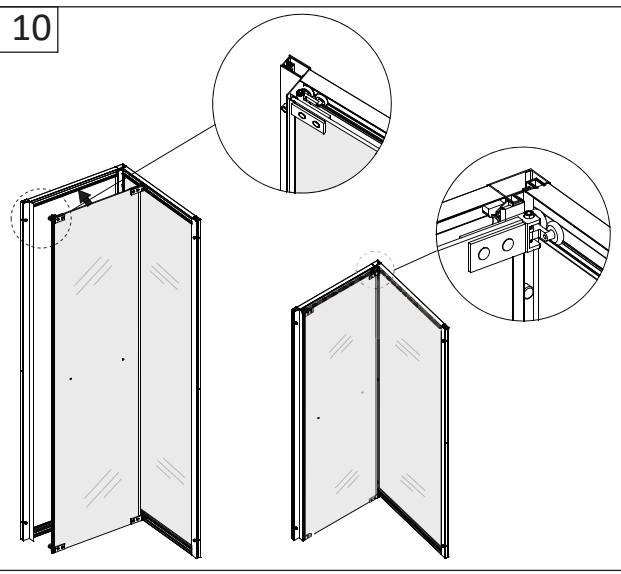
8



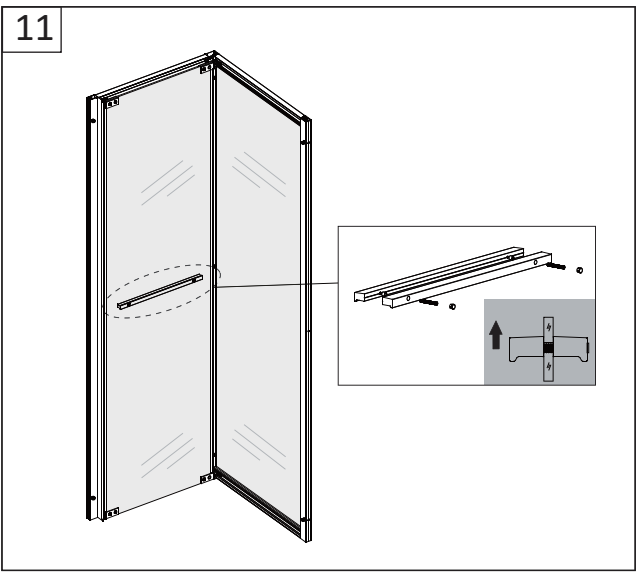
9



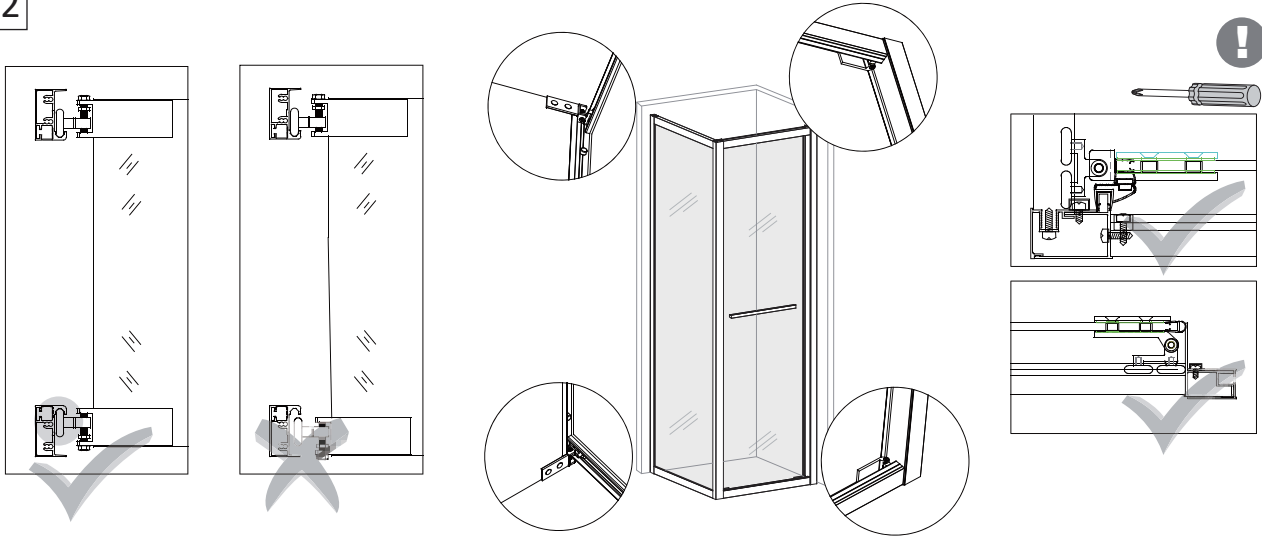
10



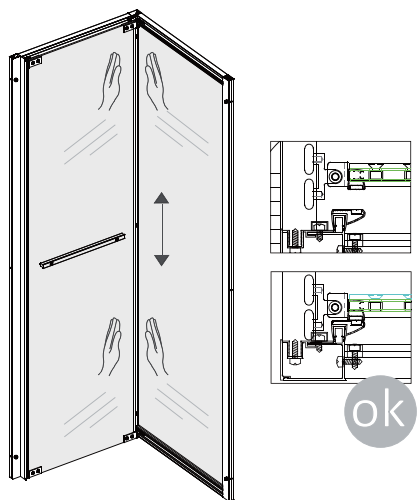
11



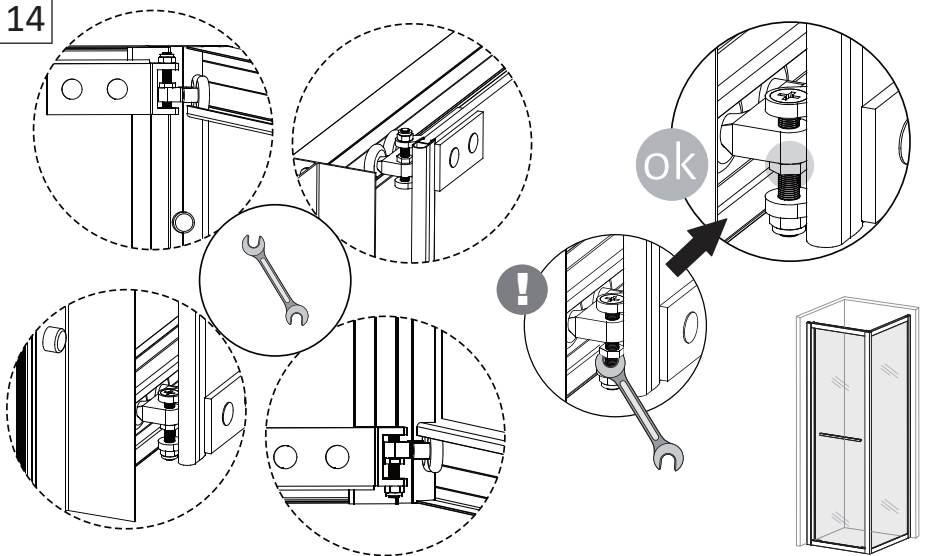
12



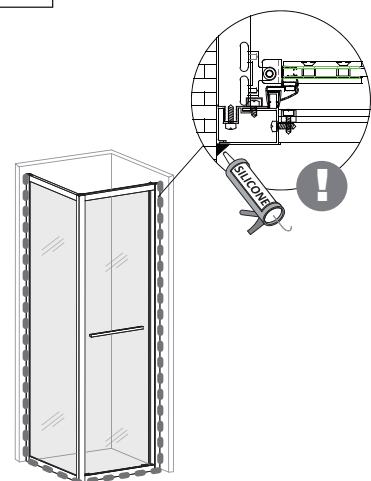
13



14



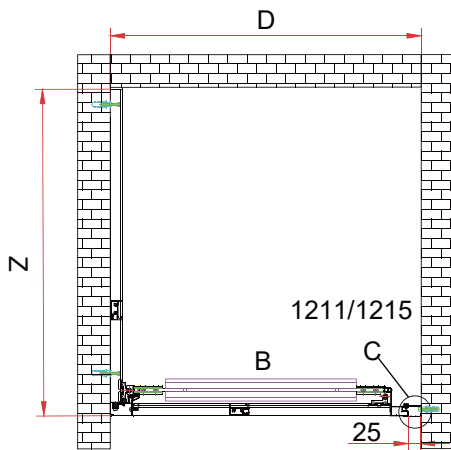
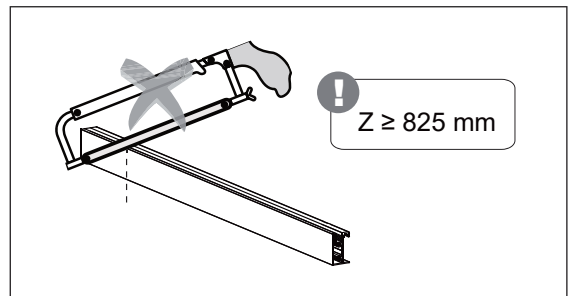
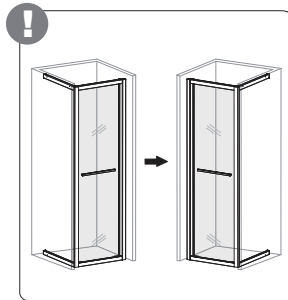
15



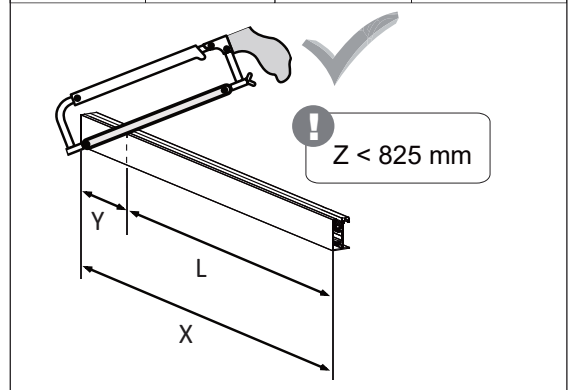
COMBI A



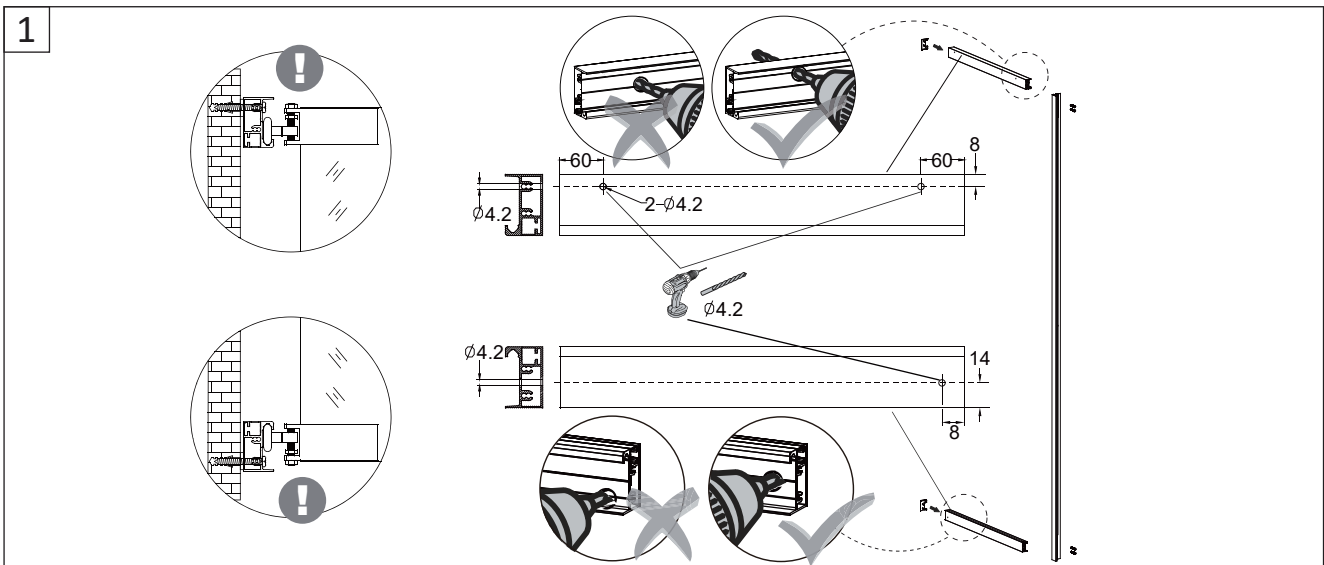
B-Door (mm)	Size of Enclosure (B+C)(mm)	Maxmium Door Opening without wheel stopper (mm)	Maxmium Door Opening with wheel stopper (mm)	Adjustment Range (B+C)(mm)
650	650	485	480	627~652
700	700	540	535	682~707
750	750	595	590	737~762



B-Door (mm)	Rail Profile (mm)		
	X-Total Length (mm)	Y-Cutting Length (mm)	L-Objective Length (mm)
650	795	200	595
700	795	100	695
750	795	0	795

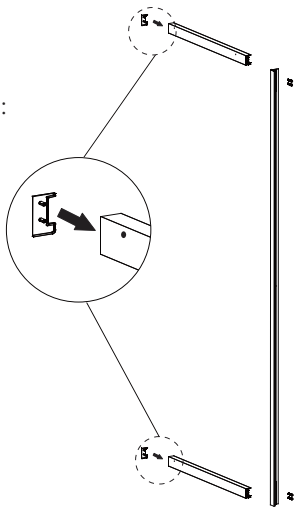


Consider the tolerance, D should be a little bit bigger than B+C.

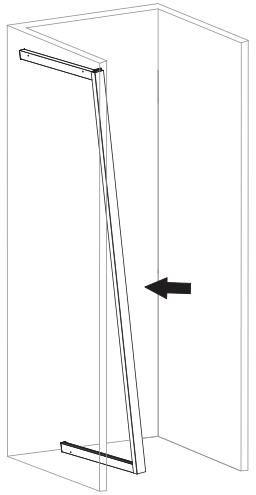


2

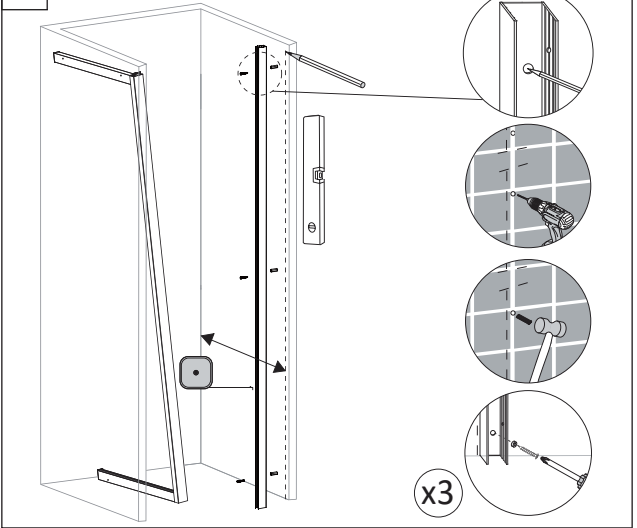
STEP 1:



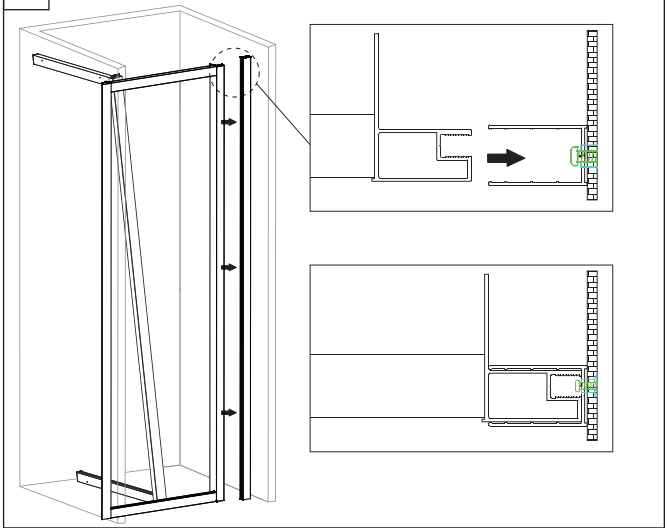
STEP 2:



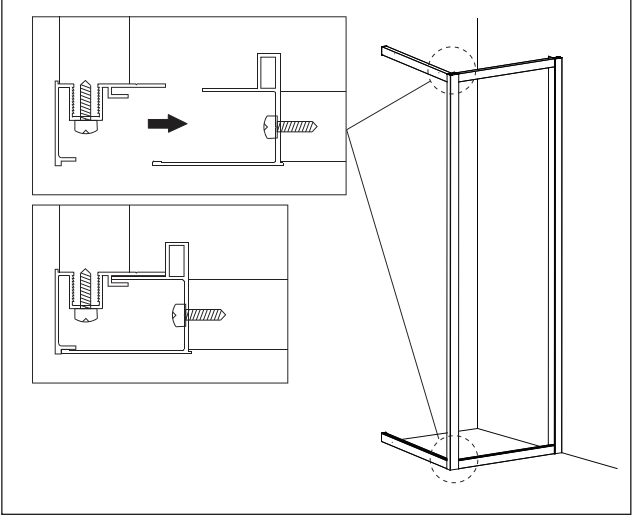
3



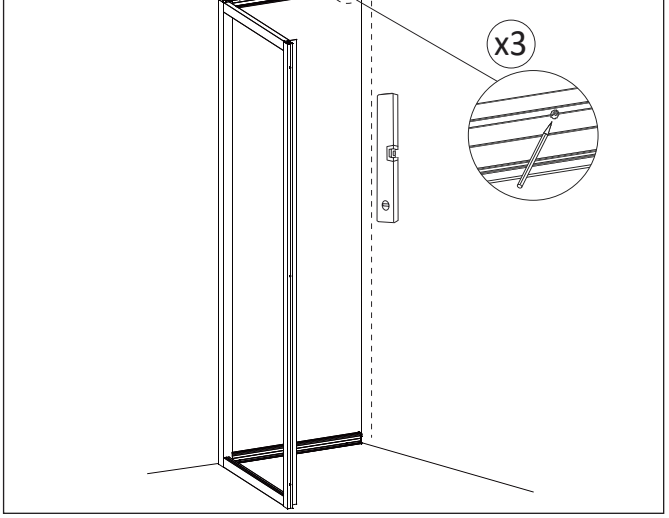
4

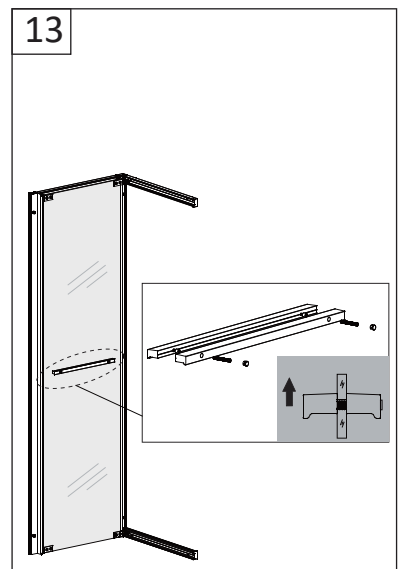
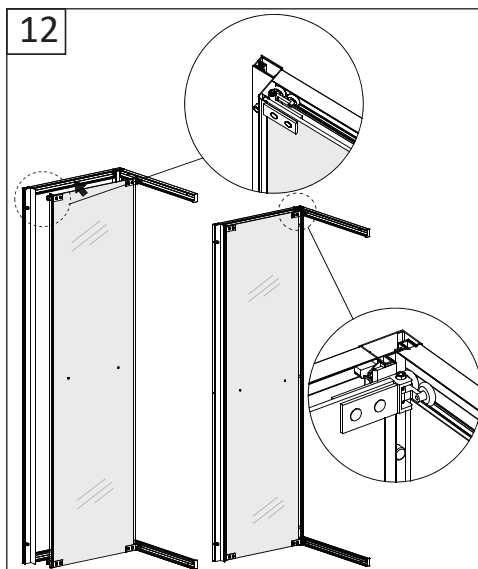
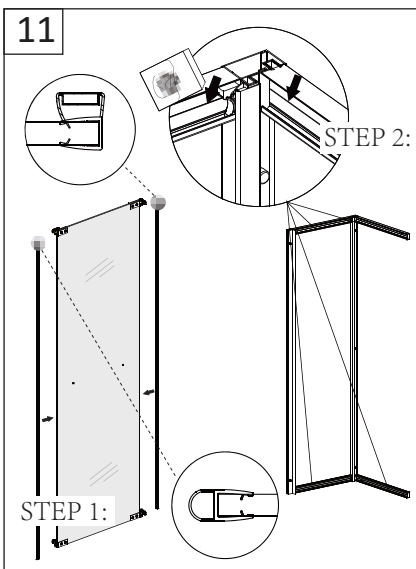
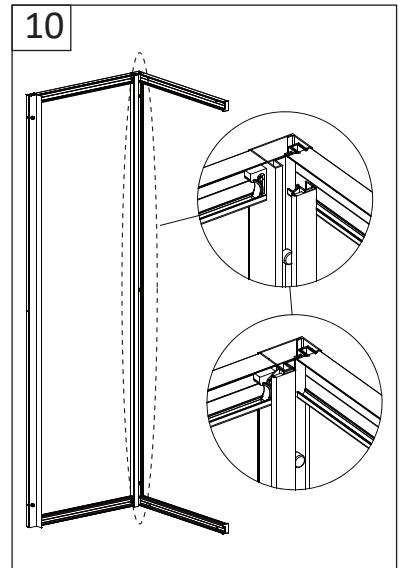
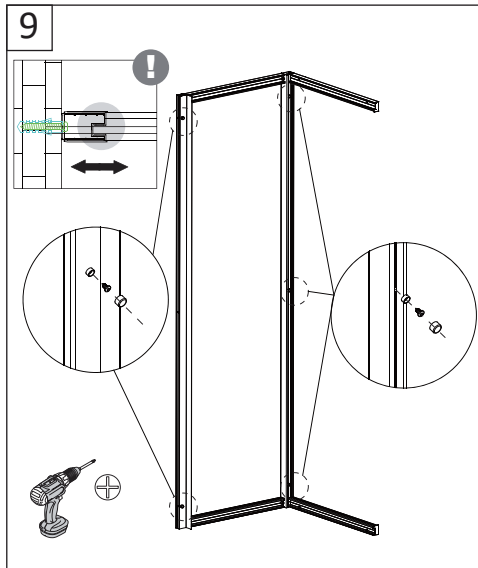
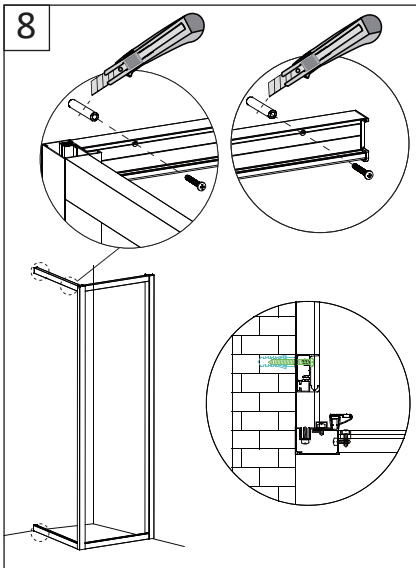
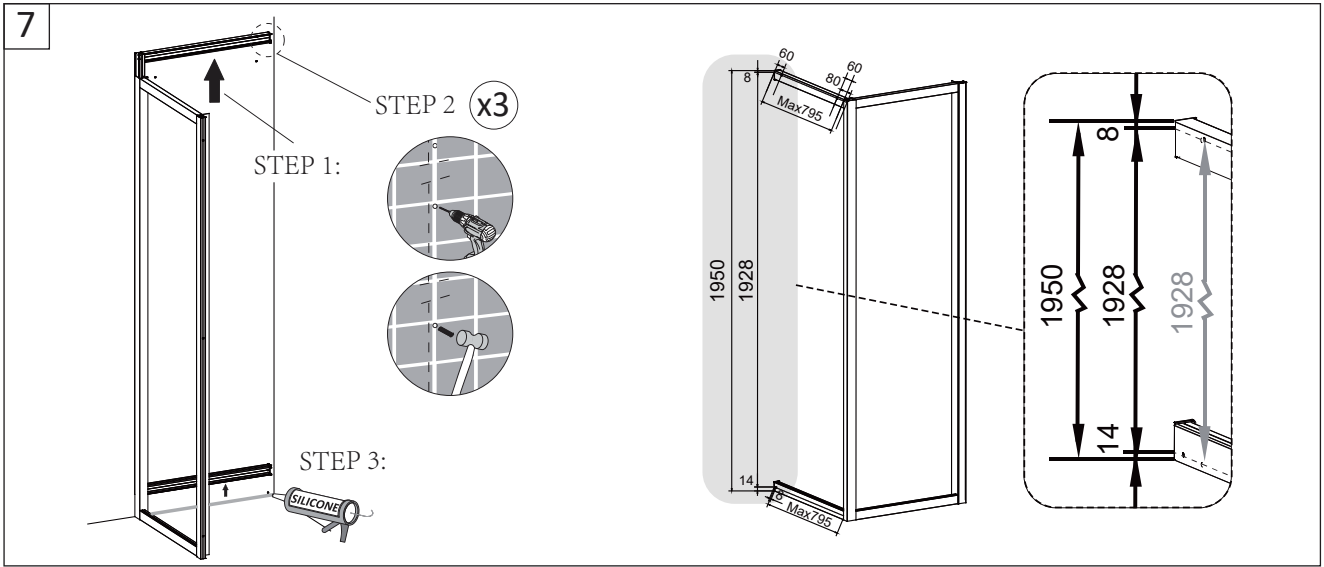


5

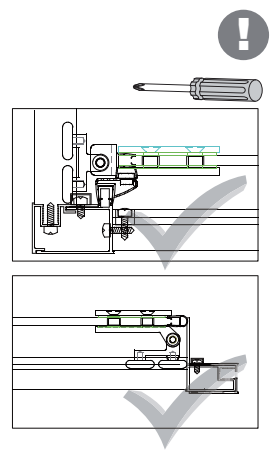
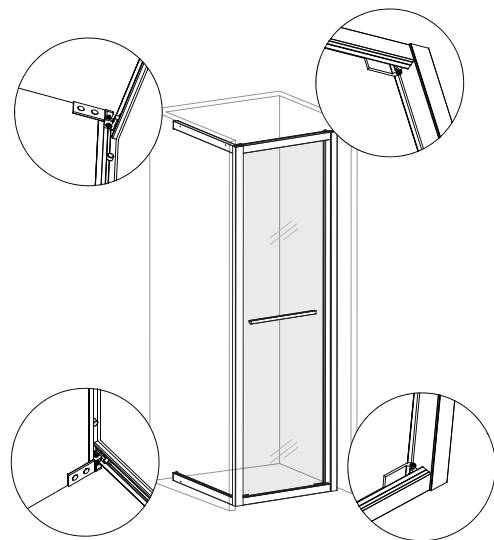
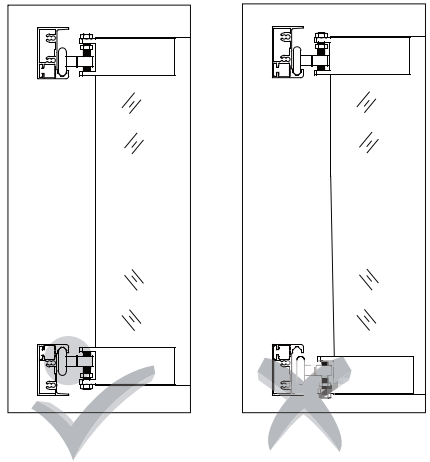


6

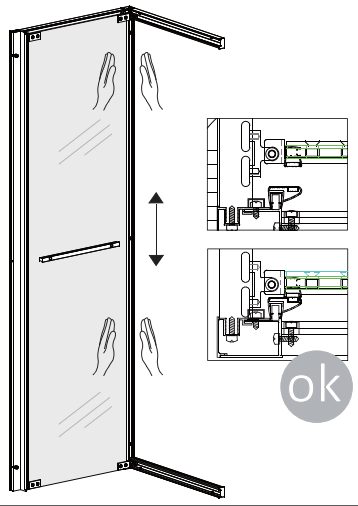




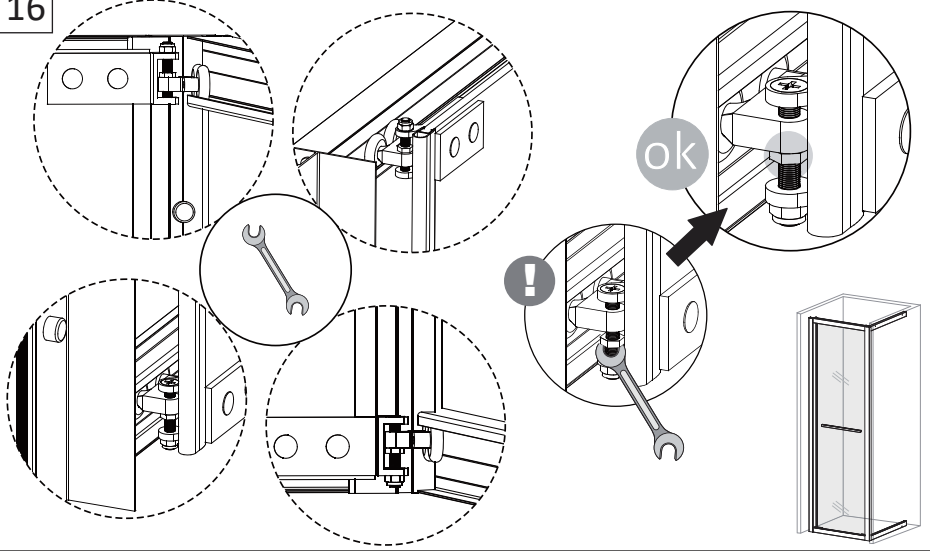
14



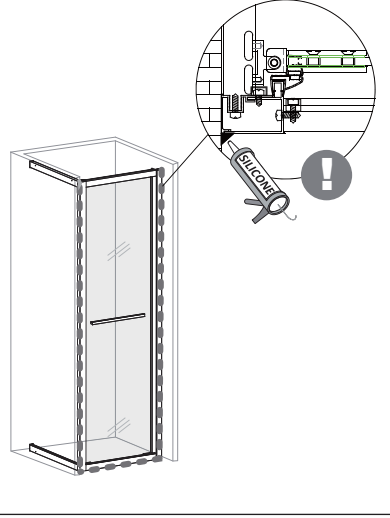
15



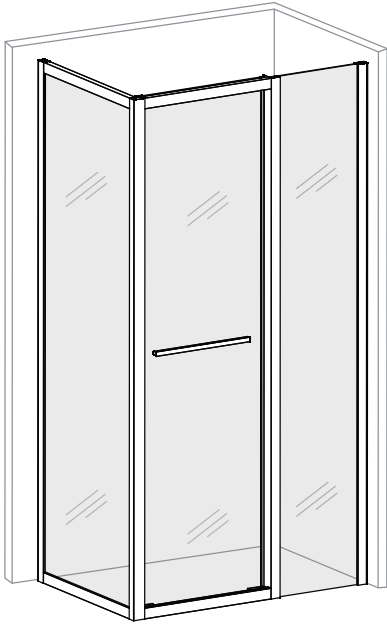
16



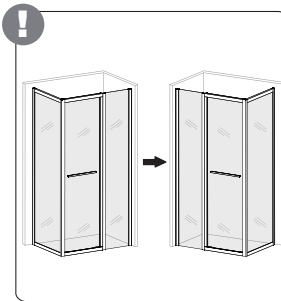
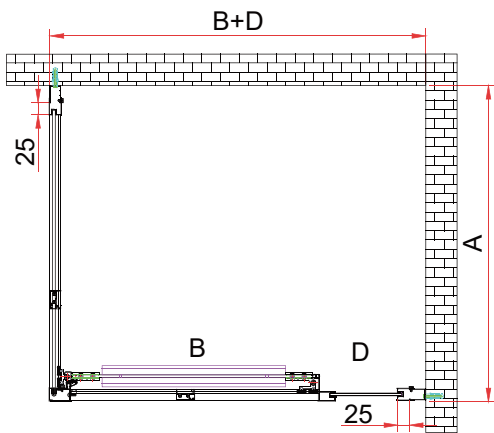
17



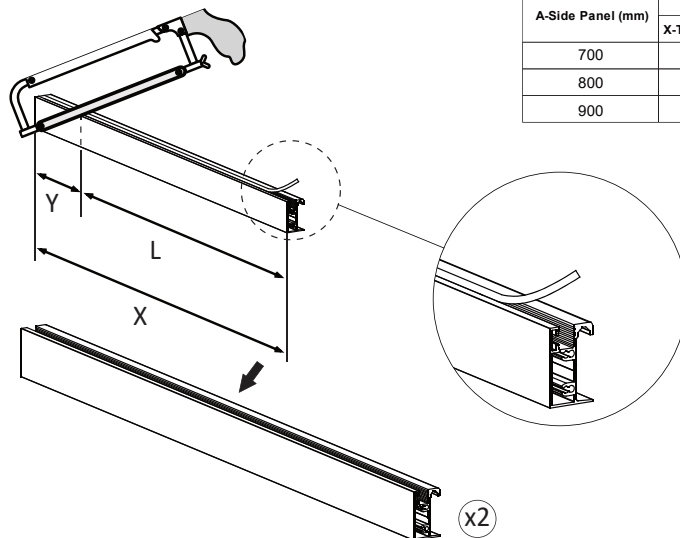
COMBI B + LAT.FIJO / COMBI B + SIDE PANEL



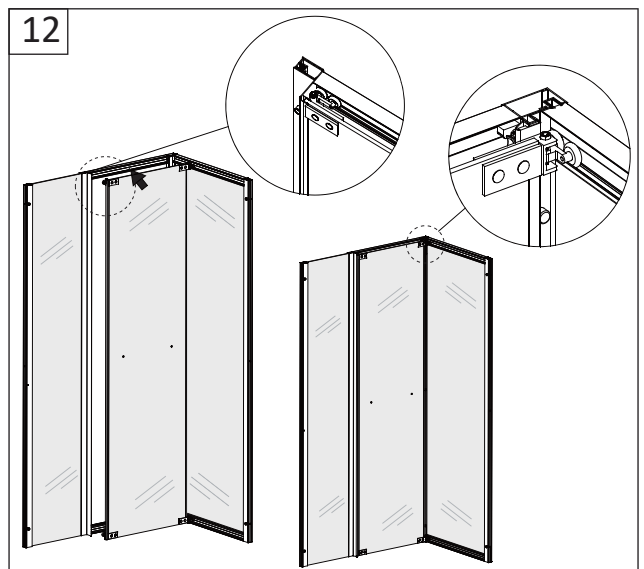
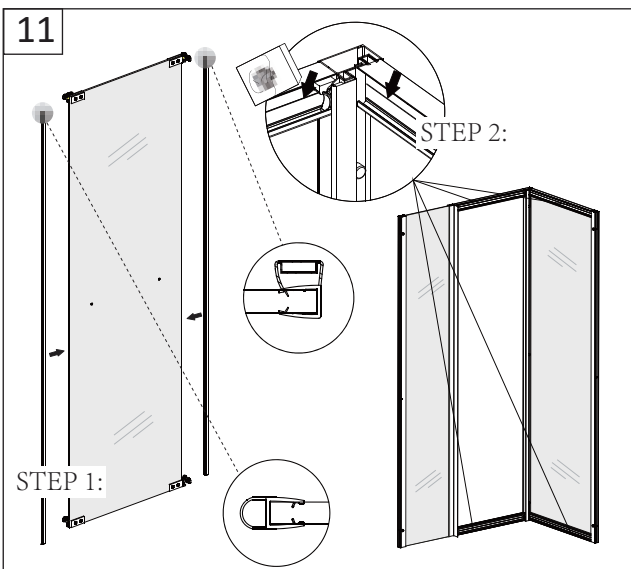
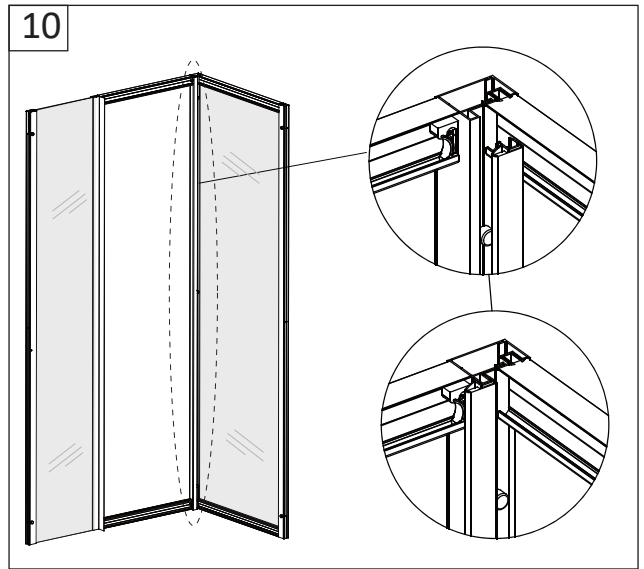
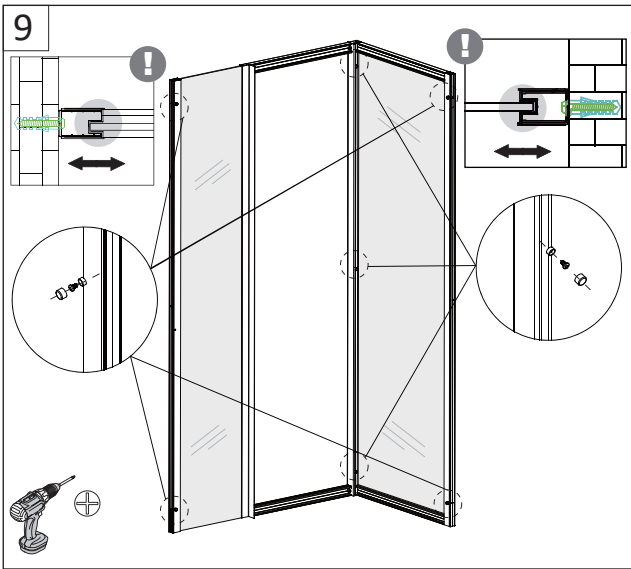
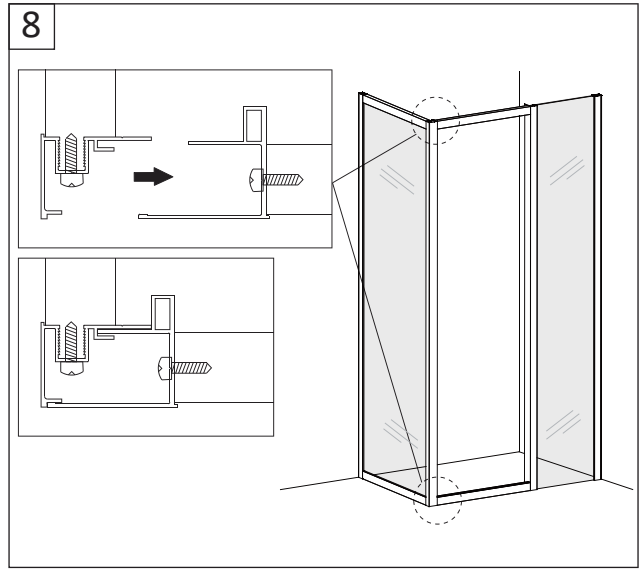
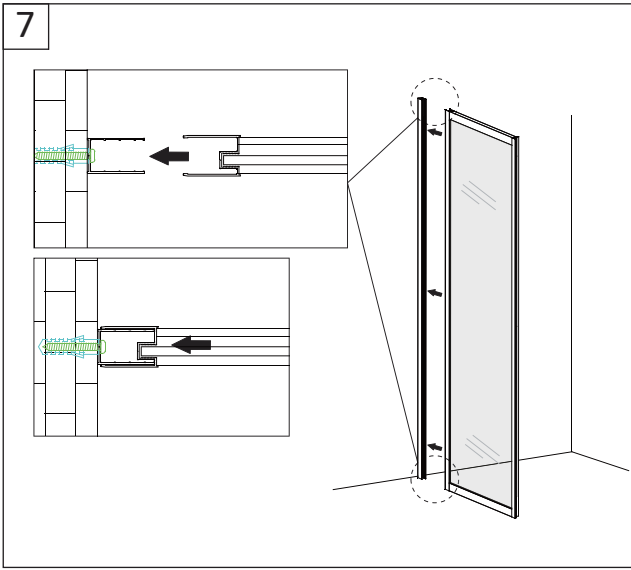
Size of Enclosure A x (B+D)(mm)	A-Side Panel (mm)	D-Front Fix Panel(mm)	B-Door (mm)	Maxmium Door Opening without wheel stopper (mm)	Maxmium Door Opening with wheel stopper (mm)	Adjustment Range(A) (mm)	Adjustment Range(B+D) (mm)
700x850(200+650)	700	200	650	485	480	663-688	800-825
700x900(250+650)	700	250	650	485	480	663-688	850-875
700x950(300+650)	700	300	650	485	480	663-688	900-925
700x1000(300+700)	700	300	700	390	390	663-688	955-980
700x1050(400+650)	700	400	650	540	535	663-688	1000-1025
700x1100(400+700)	700	400	700	390	390	663-688	1055-1080
700x1150(500+650)	700	500	650	485	480	663-688	1100-1125
700x1200(500+700)	700	500	700	390	390	663-688	1155-1180
700x1250(600+650)	700	600	650	485	480	663-688	1200-1225
700x1300(600+700)	700	600	700	390	390	663-688	1255-1280
800x850(200+650)	800	200	650	485	480	763-788	800-825
800x900(250+650)	800	250	650	485	480	763-788	850-875
800x950(250+700)	800	250	700	540	535	763-788	905-930
800x1000(300+700)	800	300	700	540	535	763-788	955-980
800x1050(300+750)	800	300	750	595	590	763-788	1010-1035
800x1100(400+700)	800	400	700	540	535	763-788	1055-1080
800x1150(500+650)	800	500	650	485	480	763-788	1100-1125
800x1200(500+700)	800	500	700	540	535	763-788	1155-1180
800x1250(500+750)	800	500	750	595	590	763-788	1210-1235
800x1300(600+700)	800	600	700	540	535	763-788	1255-1280
800x1350(600+750)	800	600	750	595	590	763-788	1310-1335
900x850(200+650)	900	200	650	485	480	863-888	800-825
900x900(250+650)	900	250	650	485	480	863-888	850-875
900x950(250+700)	900	250	700	540	535	863-888	905-930
900x1000(300+700)	900	300	700	540	535	863-888	955-980
900x1050(300+750)	900	300	750	595	590	863-888	1010-1035
900x1100(400+700)	900	400	700	540	535	863-888	1055-1080
900x1150(500+650)	900	500	650	485	480	863-888	1100-1125
900x1200(500+700)	900	500	700	540	535	863-888	1155-1180
900x1250(500+750)	900	500	750	595	590	863-888	1210-1235
900x1300(600+700)	900	600	700	540	535	863-888	1255-1280
900x1350(600+750)	900	600	750	595	590	863-888	1310-1335



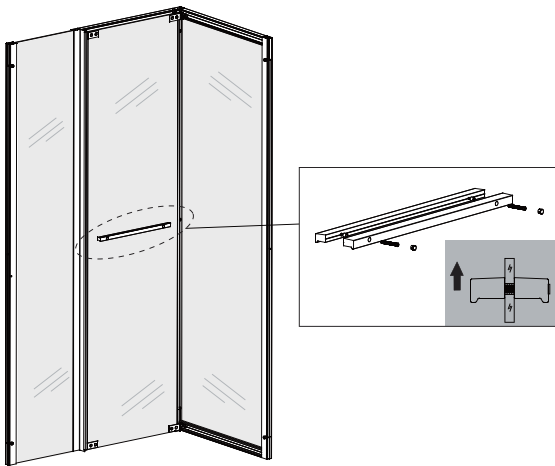
1



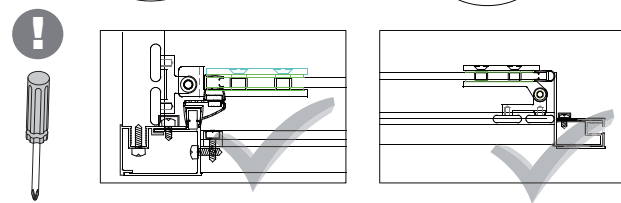
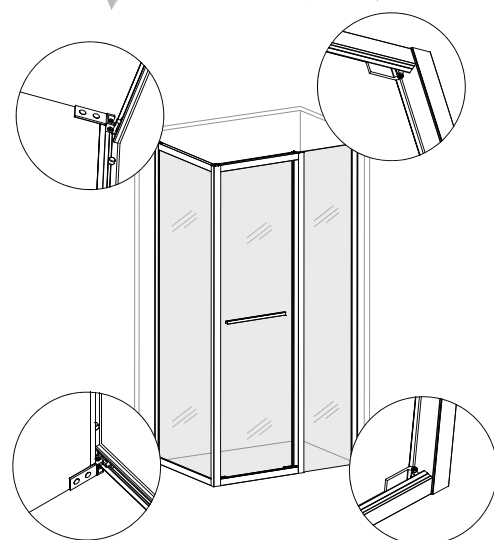
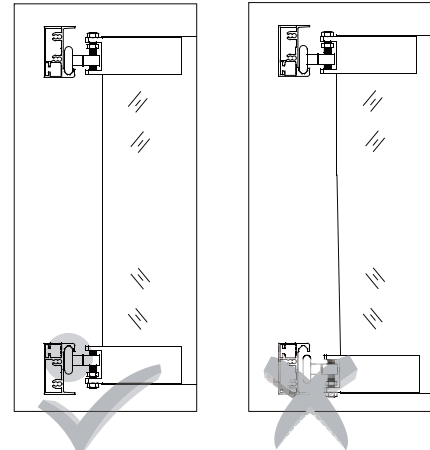
A-Side Panel (mm)	Rail Profile (mm)		
	X-Total Length (mm)	Y-Cutting Length (mm)	L-Objective Length (mm)
700	795	200	595
800	795	100	695
900	795	0	795



13



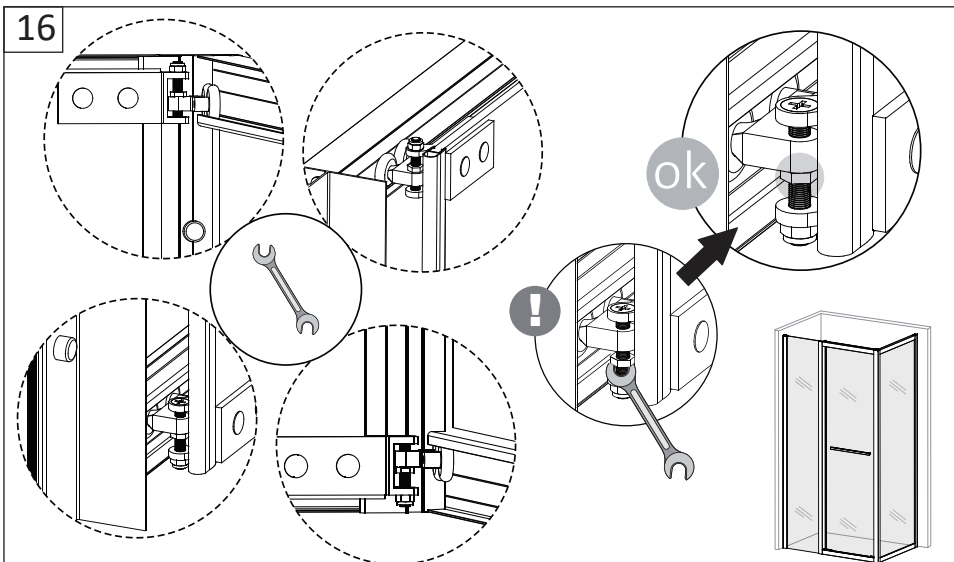
14



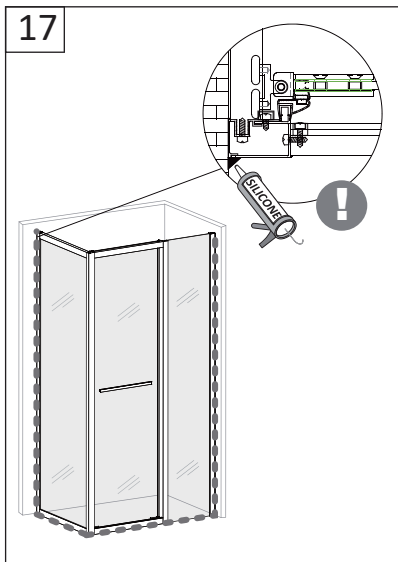
15

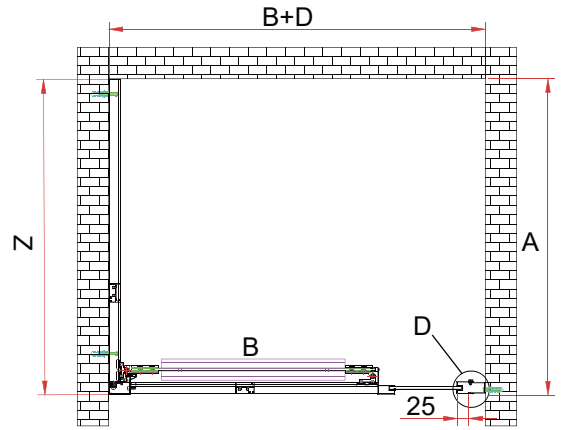
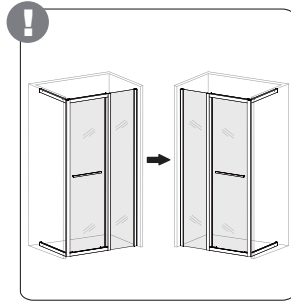


16



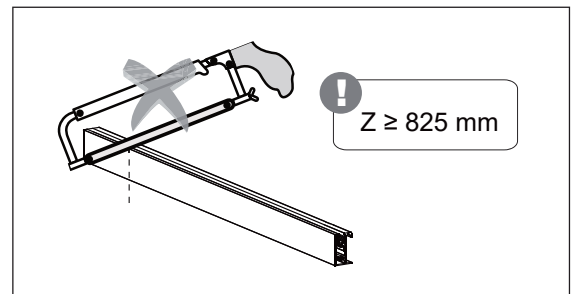
17



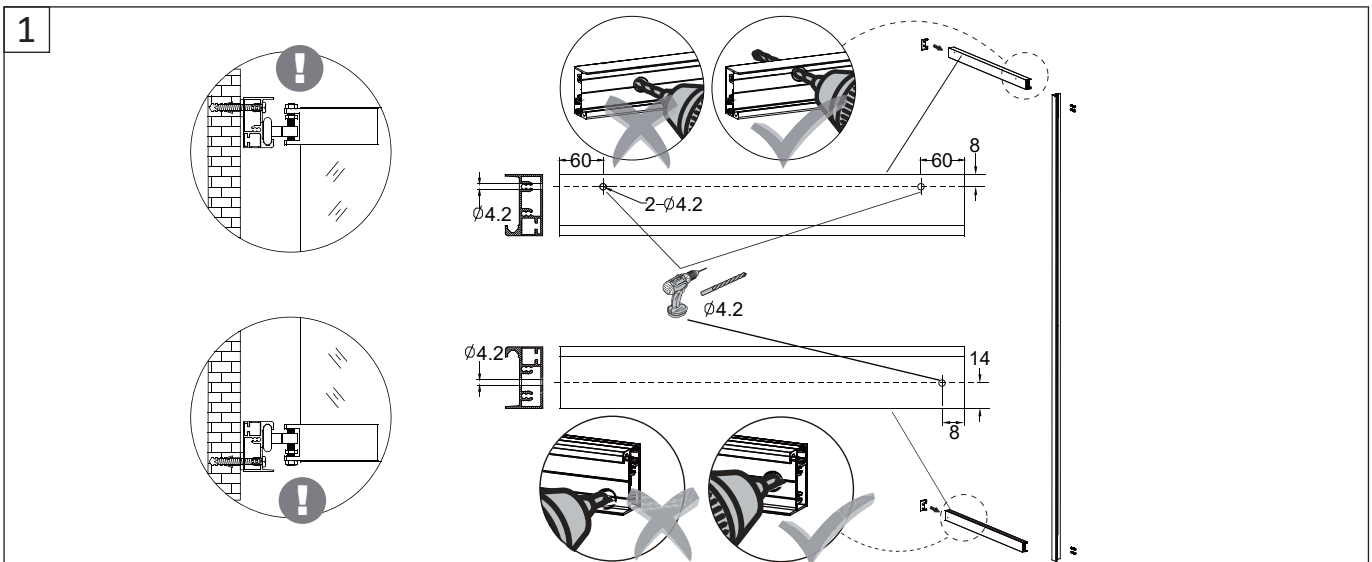
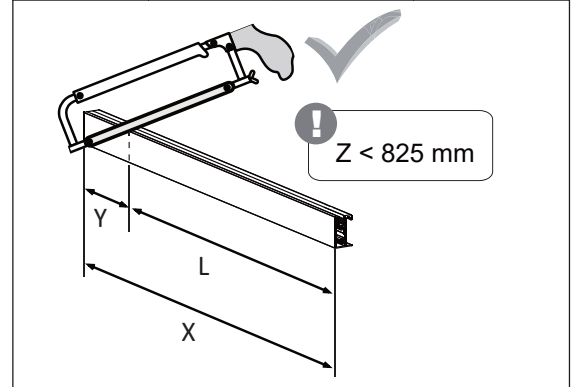


COMBI B

Size of Enclosure (B+D) (mm)	D-Front Fix Panel (mm)	B-Door (mm)	Maximum Door Opening without wheel stopper (mm)	Maximum Door Opening with wheel stopper (mm)	Adjustment Range(B+D) (mm)
850	200	650	485	480	800-825
900	250	650	485	480	850-875
900	200	700	540	535	855-880
950	300	650	485	480	900-925
950	250	700	540	535	905-930
950	200	750	595	590	910-935
1000	300	700	540	535	955-980
1000	250	750	595	590	960-985
1050	400	650	485	480	1000-1025
1050	300	750	595	590	1010-1035
1100	400	700	540	535	1055-1080
1150	500	650	485	480	1100-1125
1150	400	750	595	590	1110-1135
1200	500	700	540	535	1155-1180
1250	600	650	485	480	1200-1225
1250	500	750	595	590	1210-1235
1300	600	700	540	535	1255-1280
1350	600	750	595	590	1310-1335

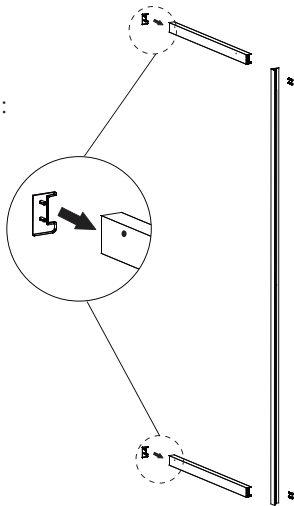


B-Door (mm)	Rail Profile (mm)		
	X-Total Length (mm)	Y-Cutting Length (mm)	L-Objective Length (mm)
650	795	200	595
700	795	100	695
750	795	0	795

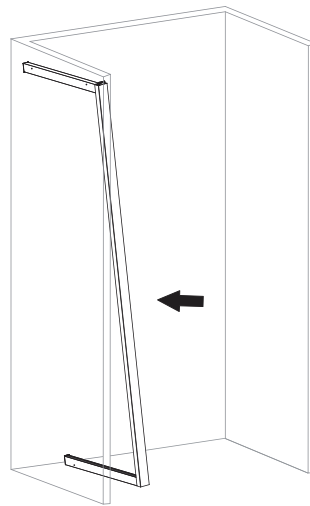


2

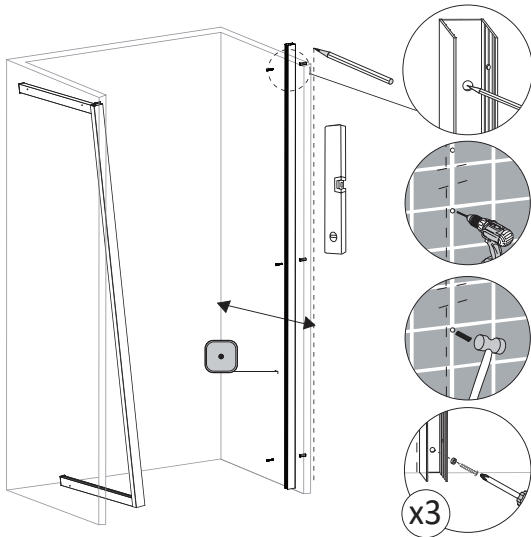
STEP 1:



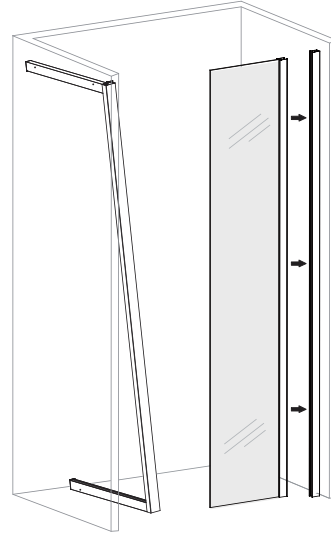
STEP 2:



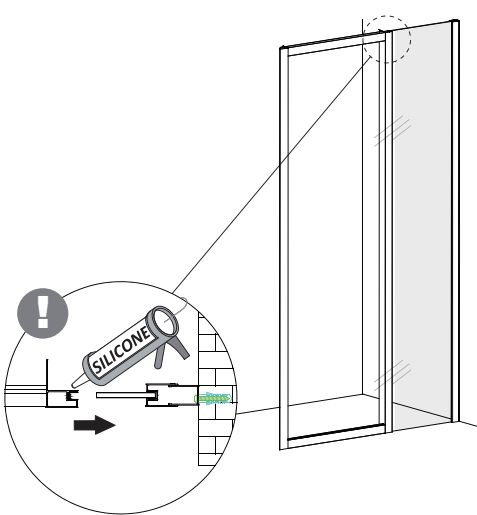
3



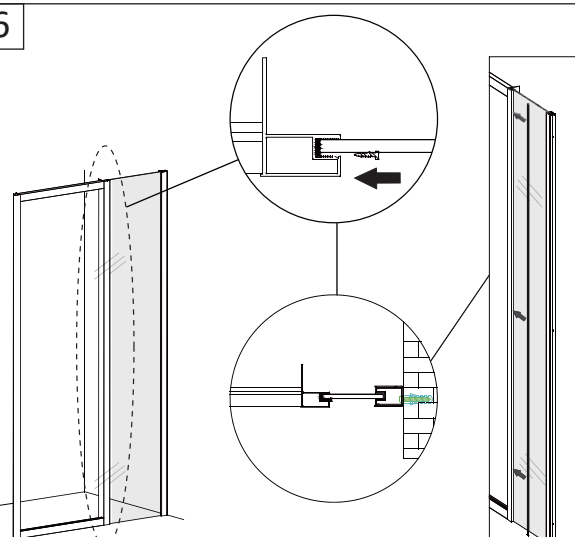
4

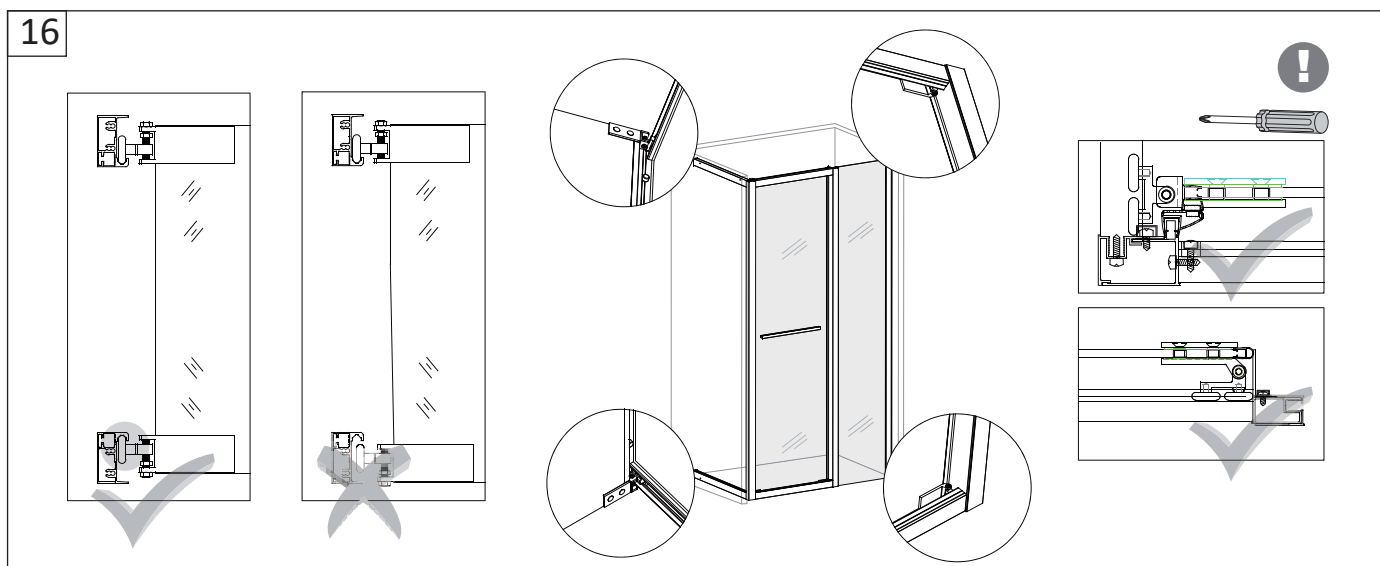
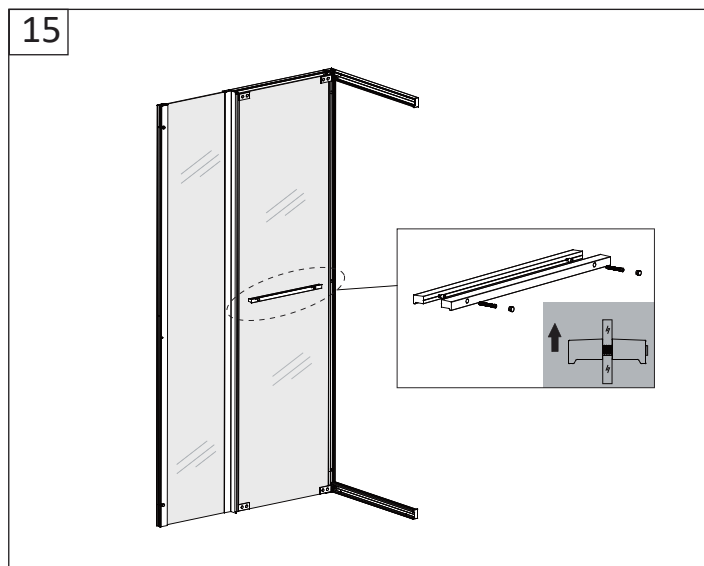
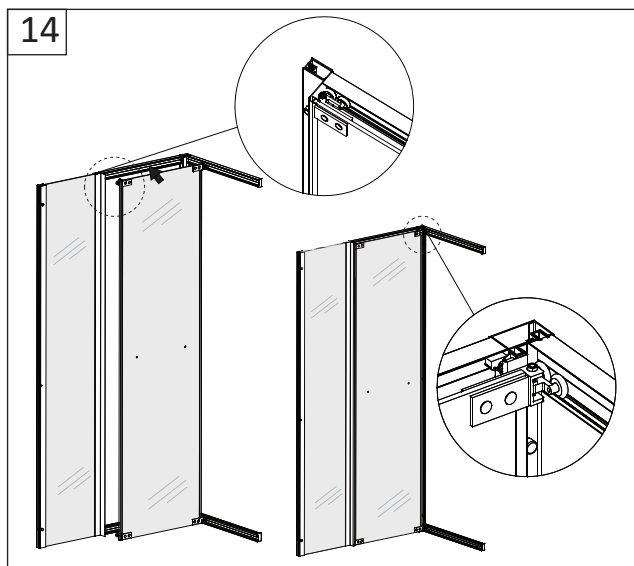
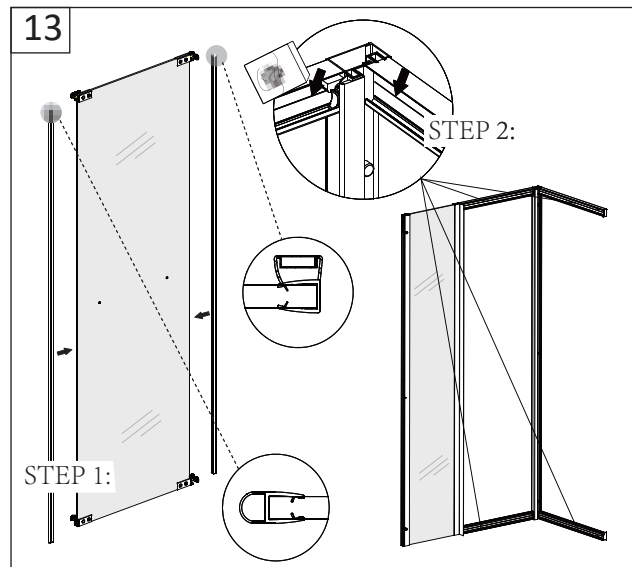
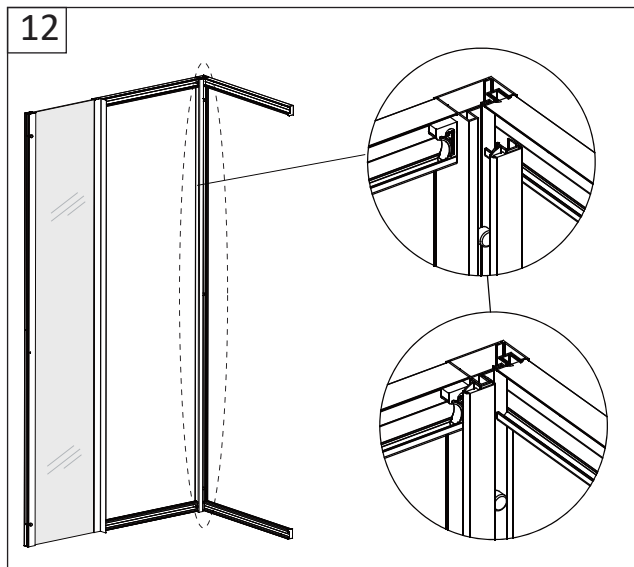


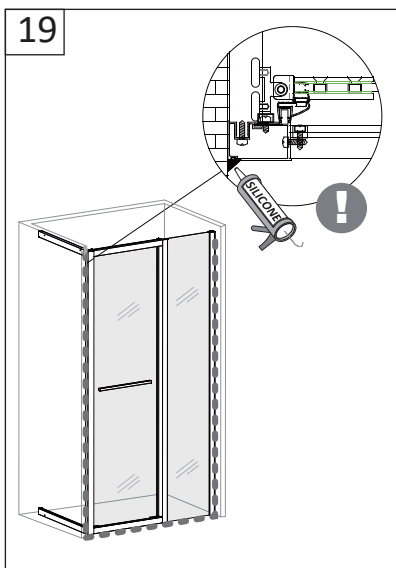
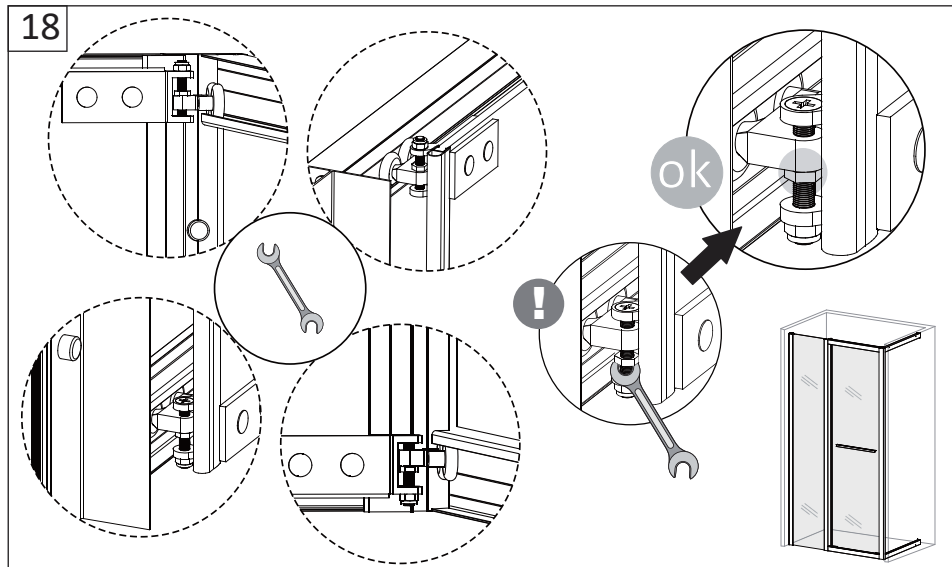
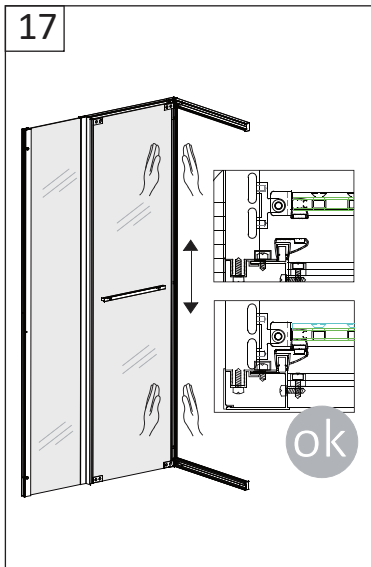
5



6







GME Lorente Internacional SL
 C\ Pinaeta,6
 Pq. Ciudad Mudeco
 46930 - Quart Poblet
 (Valencia) -España

telf. 00 34 96 252 18 55
 fax 00 34 96 252 18 56
 info@gmelorente.com
 www.gmelorente.com

GME
 DIVISI3N BAÑOS